



Laverton Place, SW5

LUROT BRAND

MEWS SPECIALISTS EST. 1971

020 7590 9955

lettings@lurotbrand.co.uk



Second Floor

External



Laverton Place, SW5

£3,000 PW

A luxurious three-bedroom mews house with a large roof terrace, in South Kensington.

The property is located on the corner of Laverton Place and Laverton Mews. As a result, the property benefits from dual aspect light, and an array of skylights and windows to enhance natural light across all floors. The lateral layout has been thoughtfully designed to maximise space and light, and is complemented by quality furnishings, appliances and a feature staircase.

The property offers a principal bedroom with a large ensuite, a walk-in-wardrobe, and an impressive outdoor balcony. The property provides two further bedrooms with separate bathrooms, a stylish kitchen with central island and dining area, a large reception/tv room, a utility room, an office, and an internal garage. The lower ground floor is fitted with windows and glass to enhance light and fresh air.

The large roof terrace offers incredible space and includes a sunroom with fully retractable doors.

The property comes with underfloor heating and air conditioning throughout.

LOCATION

Laverton Mews is a very pretty cul-de-sac mews, perfect for all the local bars, restaurants, shops and transport links that are associated with South Kensington and Gloucester Road.



External

Ground Floor



Ground Floor

First Floor



FEATURES

Three Bedrooms

Open Plan Kitchen/Dining Area

Reception Room

Three Bathrooms (incl. two
ensuites)

Guest W.C

Roof Terrace with sun-room

OTHER USEFUL INFORMATION

EPC	C
Council Tax Band	G
Deposit Amount	£18,000.00

NEAREST TUBE STATIONS

Earl's Court (District, Circle and Piccadilly Line)

Laverton Place, SW5

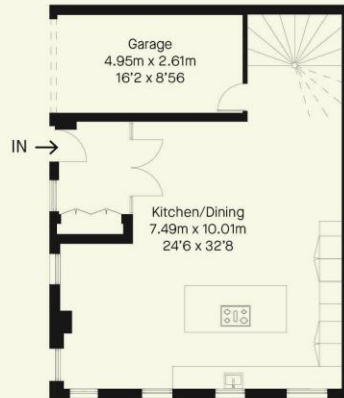


Approximate Gross Internal Area (including Garage)

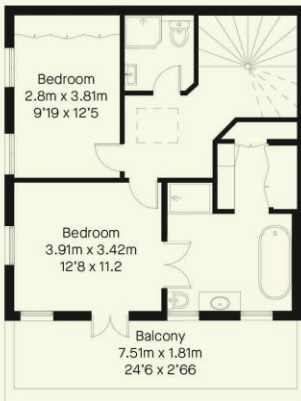
2470FT² - 229.5M²



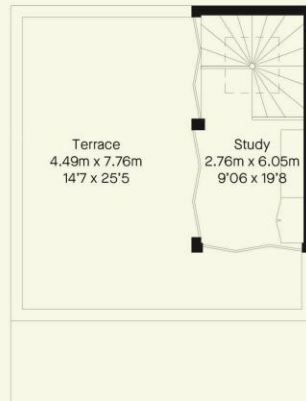
Basement



Ground Floor



First Floor



Second Floor

Whilst every attempt has been made to ensure the accuracy of the floorplan contained here, measurements of doors, windows, rooms and any other item are approximate and no responsibility is taken for any error, omission, or misstatement. This plan is for guidance only and must not be relied upon as a statement of fact. Attention is drawn to the important notice on the last page of the text of the particulars.

Hyde Park
37-41 Sussex Place, Hyde Park,
London W2 2TH

South Kensington
4-5 Kynance Place, South Kensington,
London SW7 4QS

WWW.LUROTBRAND.CO.UK



Members of NAEA, ARLA, onthemarket.com. Lurot Brand (2) Limited T/A Lurot Brand. Registered in England No. 02035540. Registered Office: 37-41 Sussex Place, London, W2 2TH. VAT No. 629 099 505. www.lurotbrand.co.uk

We have produced these sales particulars as a general guide. We have not carried out a detailed survey of the property and have not tested the services, appliances, or specific fittings. Room sizes are for general guidance purposes and should not be relied upon for fitting carpets or furnishings. Pictures may have been digitally enhanced. Floor plans are not to scale. Fittings shown on floor plans may not match the actual layout or size of fittings at the property. None of the statements as to the property contained in these particulars are to be relied upon as statements or representations of fact. Any reference to alterations to, or use of, any part of the property does not mean that any necessary planning, building regulations or other consent has been obtained. A buyer or lessee must find out by inspection or in other ways that these matters have been properly dealt with and that all information is correct.

All statements in these particulars as to this property are made without responsibility on the part of Lurot Brand. The Seller does not make or give and neither Lurot Brand or any person in their employment has any authority to make or give any representation or warranty whatever in relation to this property.