



Lexham Mews, W8

LUROT BRAND

MEWS SPECIALISTS EST. 1971

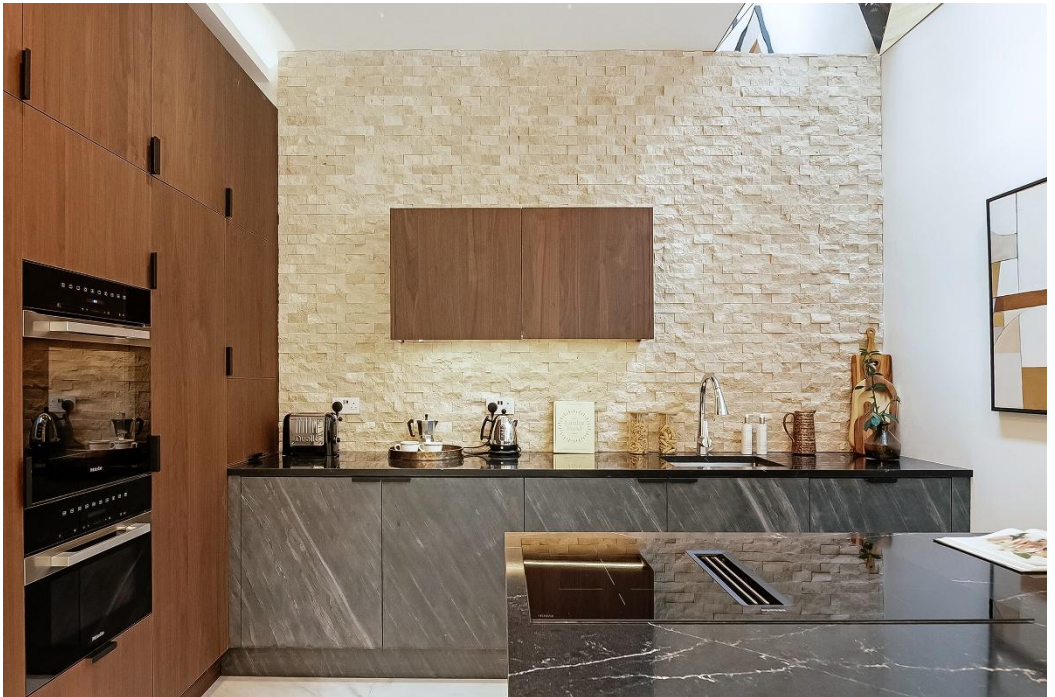
020 7590 9955

sales@lurotbrand.co.uk



Basement

Basement



Lexham Mews, W8

Freehold

£3,250,000 STC

Exceptionally Renovated Mews House in the Heart of Kensington.

A delightful and unusually wide mews house with an impressive 33-foot frontage, combining striking contemporary architecture with eco-friendly construction and excellent green credentials. The house widens and narrows throughout, reaching a depth of 16'6 at its deepest point and tapering to just 4'3, creating distinctive spaces with impressive volumes, excellent daylighting and abundant natural light.

Finished to an exceptional standard using natural and sustainable materials, the house features wide-board natural oak flooring, walnut stairs and reused 200-year-old English brickwork. The bespoke kitchen is fitted with Miele appliances, quartz worktops and oversized 1,200mm x 600mm Carrara Royale white marble flooring to the kitchen and utility area. Bathrooms are finished with 600mm x 600mm Selena Beige marble tiles.

Further benefits include whole-house mechanical ventilation with heat recovery, air conditioning and Cat6 cabling throughout.

LOCATION

Lexham Mews is in a popular location in the heart of Kensington close to many shops and restaurants with Kensington High Street a short walk away. Holland Park is also nearby, offering beautiful green open space, while the area's excellent transport links make it easy to get around London.



Basement

Ground Floor





Ground Floor

First Floor



FEATURES

3 Bedrooms	Wide-board natural oak flooring
3 Ensuites	Carrara Royale white marble
Reused old English brickwork	Solid walnut floating staircase
Quartz worktops	Selena Beige marble

OTHER USEFUL INFORMATION

EPC	E
Council Tax Band	TBC

NEAREST TUBE STATIONS

Gloucester Road (District, Circle and Piccadilly Line) and High Street
Kensington (District and Circle Lines)

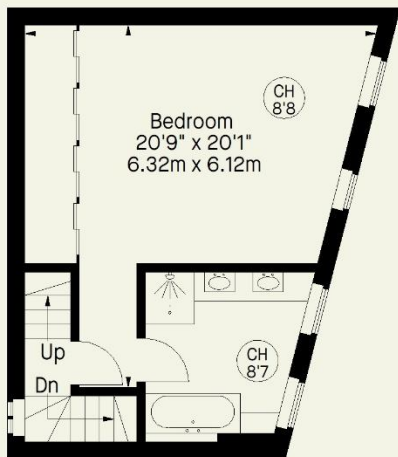
Lexham Mews, W8

Approximate Gross Internal Area
(Including Garage)

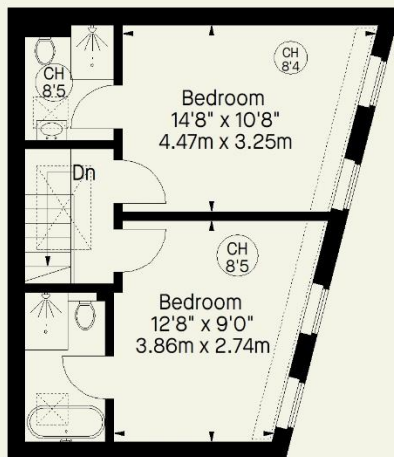
1624 FT² - 150.9 M²



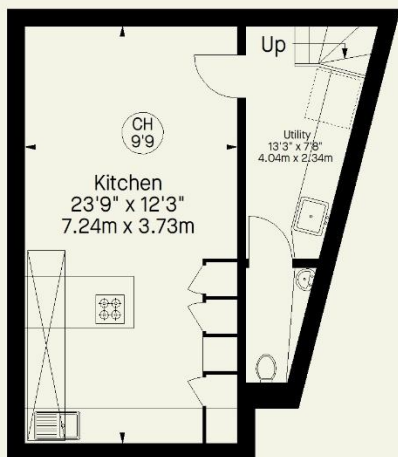
CH = Ceiling Height



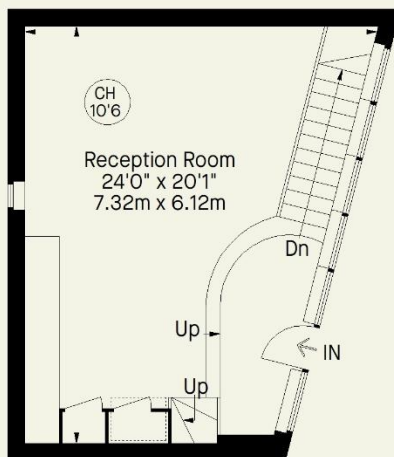
First Floor



Second Floor



Basement



Ground Floor

Whilst every attempt has been made to ensure the accuracy of the floorplan contained here, measurements of doors, windows, rooms and any other item are approximate and no responsibility is taken for any error, omission, or misstatement. This plan is for guidance only and must not be relied upon as a statement of fact. Attention is drawn to the important notice on the last page of the text in the particulars.

Hyde Park
37-41 Sussex Place, Hyde Park,
London W2 2TH

South Kensington
4-5 Kynance Place, South Kensington,
London SW7 4QS

WWW.LUROTBRAND.CO.UK



Members of NAEA, ARLA, onthemarket.com. Lurot Brand (2) Limited T/A Lurot Brand. Registered in England No. 02035540. Registered Office: 37-41 Sussex Place, London, W2 2TH. VAT No. 629 099 505. www.lurotbrand.co.uk

We have produced these sales particulars as a general guide. We have not carried out a detailed survey of the property and have not tested the services, appliances, or specific fittings. Room sizes are for general guidance purposes and should not be relied upon for fitting carpets or furnishings. Pictures may have been digitally enhanced. Floor plans are not to scale. Fittings shown on floor plans may not match the actual layout or size of fittings at the property. None of the statements as to the property contained in these particulars are to be relied upon as statements or representations of fact. Any reference to alterations to, or use of, any part of the property does not mean that any necessary planning, building regulations or other consent has been obtained. A buyer or lessee must find out by inspection or in other ways that these matters have been properly dealt with and that all information is correct.

All statements in these particulars as to this property are made without responsibility on the part of Lurot Brand. The Seller does not make or give and neither Lurot Brand or any person in their employment has any authority to make or give any representation or warranty whatever in relation to this property.