



Camden Mews, NW1

LUROT BRAND

MEWS SPECIALISTS EST. 1971

020 7590 9955
sales@lurotbrand.co.uk



Second Floor

First Floor



Camden Mews, NW1

Freehold

£1,750,000 STC

An exciting mews property opportunity in vibrant Camden.

A rare opportunity to acquire a substantial freehold mews in Camden. The property is currently arranged as a mixed-use building, with the ground floor being configured for commercial use and a self-contained residential apartment arranged over the first and second floors. This property is ideal for someone who is looking for a large work from home space and living space combined into one building. There are far-reaching views from the apartment and the property has charming features and a loft-style feel. The property also benefits from off-street parking. This is an exciting opportunity to develop subject to satisfying necessary permissions and covenants.

LOCATION

Camden Mews is in the heart of Camden, renowned for its eclectic mix of independent shops, cafés, restaurants, and the famous Camden market. Caledonian Park is a short walk away which offers access to a beautiful green space.



Mews View

FEATURES

3 Bedrooms

2 Cloakrooms

2 Reception Rooms

Off-Street Parking

1 Bathroom

Residents Parking Permit

OTHER USEFUL INFORMATION

EPC

D

Council Tax Band

C & F

N.B.

Business rates apply to
ground floor

NEAREST TUBE STATIONS

Caledonian Road Station (Piccadilly Line) and Kentish Town (Northern Line
and Overground), Camden Road (Overground). Numerous bus routes close by.

Camden Mews, NW1

Approximate Gross Internal Area
(Excluding Void)

2428 FT² - 225.6 M²

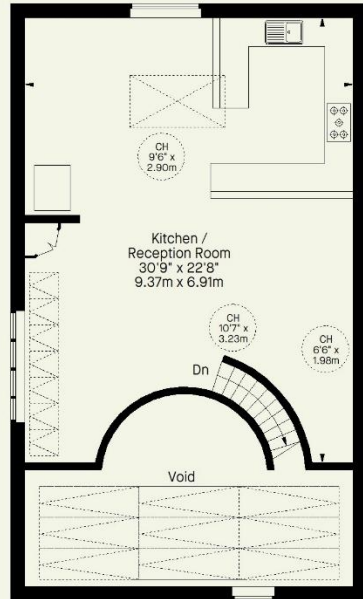


CH = Ceiling Height

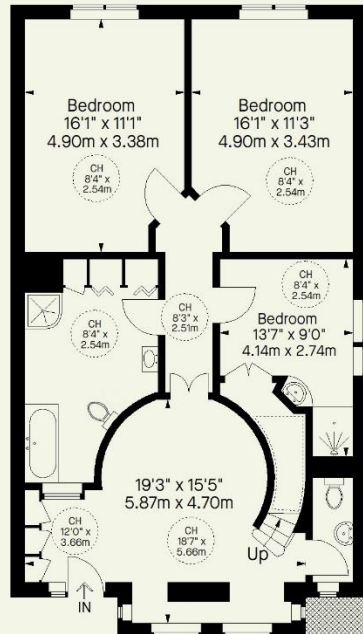
⋯ = Reduced headroom
below 1.5 m / 5'0"



Ground Floor



Second Floor



First Floor

Whilst every attempt has been made to ensure the accuracy of the floorplan contained here, measurements of doors, windows, rooms and any other item are approximate and no responsibility is taken for any error, omission, or misstatement. This plan is for guidance only and must not be relied upon as a statement of fact. Attention is drawn to the important notice on the last page of the text in the particulars.

Hyde Park
37-41 Sussex Place, Hyde Park,
London W2 2TH

South Kensington
4-5 Kynance Place, South Kensington,
London SW7 4QS

WWW.LUROTBRAND.CO.UK



Members of NAEA, ARLA, onthemarket.com. Lurot Brand (2) Limited T/A Lurot Brand. Registered in England No. 02035540. Registered Office: 37-41 Sussex Place, London, W2 2TH. VAT No. 629 099 505. www.lurotbrand.co.uk

We have produced these sales particulars as a general guide. We have not carried out a detailed survey of the property and have not tested the services, appliances, or specific fittings. Room sizes are for general guidance purposes and should not be relied upon for fitting carpets or furnishings. Pictures may have been digitally enhanced. Floor plans are not to scale. Fittings shown on floor plans may not match the actual layout or size of fittings at the property. None of the statements as to the property contained in these particulars are to be relied upon as statements or representations of fact. Any reference to alterations to, or use of, any part of the property does not mean that any necessary planning, building regulations or other consent has been obtained. A buyer or lessee must find out by inspection or in other ways that these matters have been properly dealt with and that all information is correct.

All statements in these particulars as to this property are made without responsibility on the part of Lurot Brand. The Seller does not make or give and neither Lurot Brand or any person in their employment has any authority to make or give any representation or warranty whatever in relation to this property.