



Cornwall Gardens, SW7

LUROT BRAND

MEWS SPECIALISTS EST. 1971

020 7590 9955

lettings@lurotbrand.co.uk



Living Room

Kitchen



Cornwall Gardens, SW7

Furnished

£1,500 PW

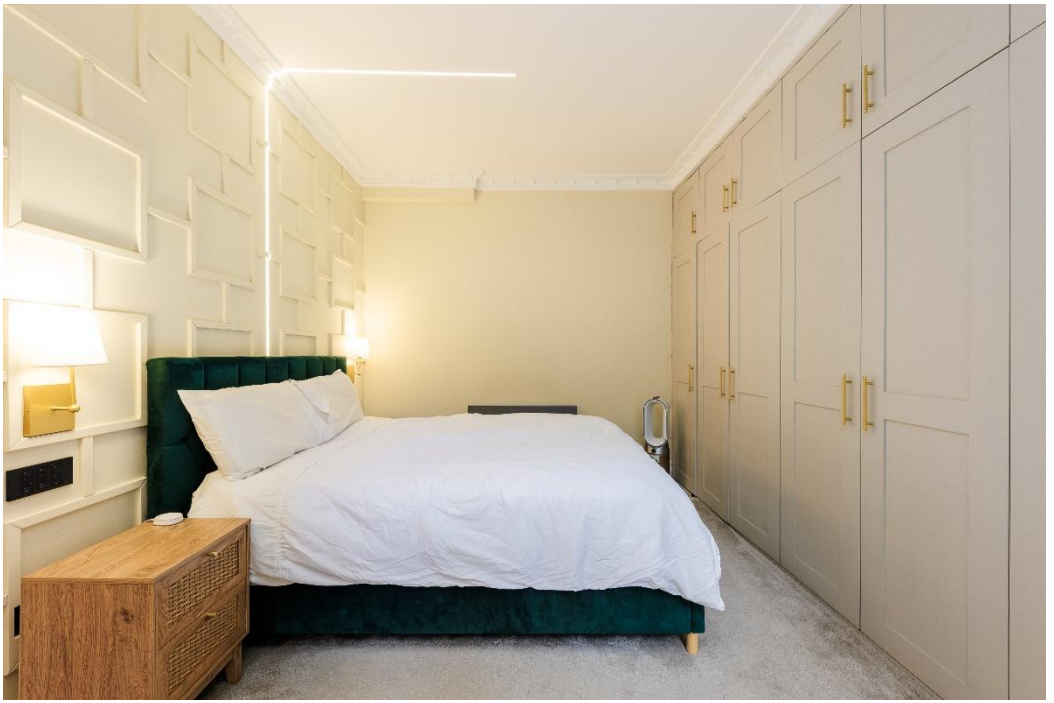
A stunningly refurbished one-bedroom apartment.

Available for SHORT LETS, this property has been fully refurbished throughout to create a modern one-bedroom apartment on the lower ground floor of a period building in Cornwall Gardens.

The beautiful reception room features stylish wall panelling, wood flooring, and space for a both living and dining areas. The kitchen is fully fitted with integrated appliances, and the property further benefits from a double bedroom with fitted storage, a sleek bathroom, and a private patio.

LOCATION

Cornwall Gardens is a popular garden square ideally situated for the diverse amenities of South Kensington with easy access around central London and beyond by road and rail.



Bedroom

Bathroom





Patio

External



FEATURES

One bedroom

Large Living Room

Fitted Kitchen

Patio

One Bathroom

OTHER USEFUL INFORMATION

EPC

D

Council Tax Band

E

Deposit Amount

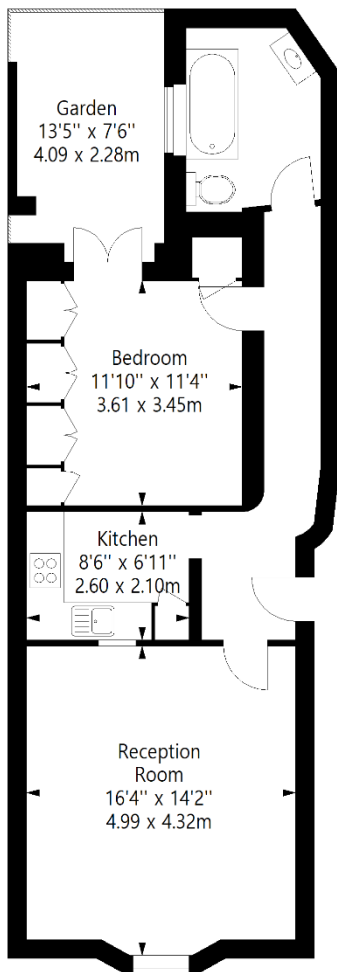
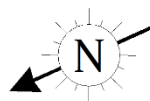
£9,000.00

NEAREST TUBE STATIONS

Gloucester Road (District Line)

Cornwall Gardens, SW7

Approximate Gross Internal Area
56 sq.m (603 sq.ft)



GROUND FLOOR

Floor Plan produced for Lurot Brand by Mays Property Marketing © . Tel 020 3397 4594
Illustration for identification purposes only. Not to scale.
Orientation, measurements, and other details are approximate and for guidance only,
purchasers should verify details independently.
Where a room has a sloping ceiling the dotted line marks 1.50M height,
and all measurements shown are at floor level.

Hyde Park
37-41 Sussex Place, Hyde Park,
London W2 2TH

South Kensington
4-5 Kynance Place, South Kensington,
London SW7 4QS

WWW.LUROTBRAND.CO.UK



Members of NAEA, ARLA, onthemarket.com. Lurot Brand (2) Limited T/A Lurot Brand. Registered in England No. 02035540. Registered Office: 37-41 Sussex Place, London, W2 2TH. VAT No. 629 099 505. www.lurotbrand.co.uk

We have produced these sales particulars as a general guide. We have not carried out a detailed survey of the property and have not tested the services, appliances, or specific fittings. Room sizes are for general guidance purposes and should not be relied upon for fitting carpets or furnishings. Pictures may have been digitally enhanced. Floor plans are not to scale. Fittings shown on floor plans may not match the actual layout or size of fittings at the property. None of the statements as to the property contained in these particulars are to be relied upon as statements or representations of fact. Any reference to alterations to, or use of, any part of the property does not mean that any necessary planning, building regulations or other consent has been obtained. A buyer or lessee must find out by inspection or in other ways that these matters have been properly dealt with and that all information is correct.

All statements in these particulars as to this property are made without responsibility on the part of Lurot Brand. The Seller does not make or give and neither Lurot Brand or any person in their employment has any authority to make or give any representation or warranty whatever in relation to this property.