



# Kelso Place, W8

**LUROT BRAND**

MEWS SPECIALISTS EST. 1971

020 7590 9955

[lettings@lurotbrand.co.uk](mailto:lettings@lurotbrand.co.uk)



First Floor

First Floor



# Kelso Place, W8

Unfurnished

£3,000 PCM

---

A charming one-bedroom mews house with a vaulted ceiling, set on a quiet road in W8.

The property boasts a particularly bright open-plan kitchen and living room on the first floor. The vaulted ceiling with skylights adds brightness and depth to the first floor living space. The bedroom on the ground floor comes with a large ensuite which can be accessed directly from the bedroom or main corridor. The property benefits from plenty of built-in storage throughout.

## LOCATION

Kelso Place is a tree-lined cul-de-sac with small period mews style cottages, situated off Stanford Road, south of the shops and cafes of Kensington High Street and the open green spaces of Kensington Gardens.



First Floor

Ground Floor





Ground Floor

Ground Floor



## FEATURES

One Bedroom

---

One Ensuite

---

Open Kitchen/Living Room

---

Freehold

---

---

## OTHER USEFUL INFORMATION

EPC	D
Council Tax Band	F
Deposit Amount	£3,460.00

## NEAREST TUBE STATIONS

High Street Kensington (District, Circle) & Gloucester Road (District, Circle, Piccadilly)

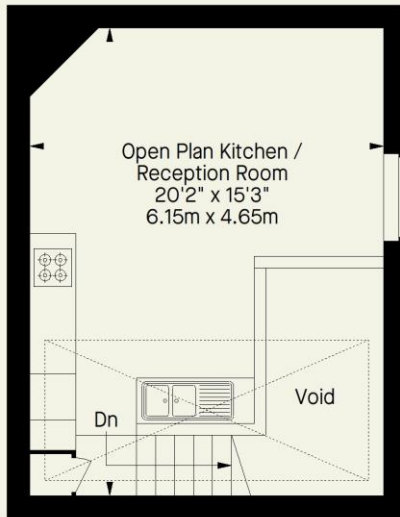
---

---

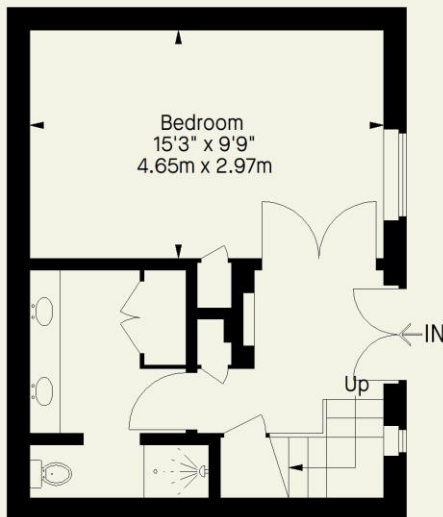
# Kelso Place W8

Approximate Gross Internal Area  
(Including Void)

619 FT<sup>2</sup> - 57.5 M<sup>2</sup>



**First Floor**



**Ground Floor**

Whilst every attempt has been made to ensure the accuracy of the floorplan contained here, measurements of doors, windows, rooms and any other item are approximate and no responsibility is taken for any error, omission, or misstatement. This plan is for guidance only and must not be relied upon as a statement of fact. Attention is drawn to the important notice on the last page of the text in the particulars.

Hyde Park  
37-41 Sussex Place, Hyde Park,  
London W2 2TH

South Kensington  
4-5 Kynance Place, South Kensington,  
London SW7 4QS

[WWW.LUROTBRAND.CO.UK](http://WWW.LUROTBRAND.CO.UK)



Members of NAEA, ARLA, onthemarket.com. Lurot Brand (2) Limited T/A Lurot Brand. Registered in England No. 02035540. Registered Office: 37-41 Sussex Place, London, W2 2TH. VAT No. 629 099 505. [www.lurotbrand.co.uk](http://www.lurotbrand.co.uk)

We have produced these sales particulars as a general guide. We have not carried out a detailed survey of the property and have not tested the services, appliances, or specific fittings. Room sizes are for general guidance purposes and should not be relied upon for fitting carpets or furnishings. Pictures may have been digitally enhanced. Floor plans are not to scale. Fittings shown on floor plans may not match the actual layout or size of fittings at the property. None of the statements as to the property contained in these particulars are to be relied upon as statements or representations of fact. Any reference to alterations to, or use of, any part of the property does not mean that any necessary planning, building regulations or other consent has been obtained. A buyer or lessee must find out by inspection or in other ways that these matters have been properly dealt with and that all information is correct.

All statements in these particulars as to this property are made without responsibility on the part of Lurot Brand. The Seller does not make or give, and neither Lurot Brand nor any person in their employment has any authority to make or give any representation or warranty whatever in relation to this property.