



St. Petersburg Mews, W2

LUROT BRAND

MEWS SPECIALISTS EST. 1971

020 7590 9955
sales@lurotbrand.co.uk



Reception Room

Kitchen



St. Petersburg Mews, W2

Freehold

£1,550,000 STC

A charming three-bedroom mews house in one of the most desirable locations in Bayswater.

Tucked away in a quiet cobbled mews in the heart of W2, this beautifully arranged three-bedroom home offers contemporary living space. Set over two floors, the property combines generous proportions with a very practical layout. Access to the house is gained through an entranceway, subject to an easement shared with two other parties. The ground floor has a superb open-plan reception and kitchen, offering clearly defined areas for dining, relaxing, and cooking. Upstairs, the first floor provides three well-balanced bedrooms. The principal bedroom benefits from a large en-suite, has excellent built in storage and has a Juliet balcony overlooking the mews, bringing in natural light. There are two further bedrooms which share a well-appointed bathroom and make ideal guest rooms, children's rooms, or a home office.

LOCATION

Positioned within a charming and sought-after mews in the Bayswater Conservation area, the property offers the rare combination of tranquillity and convenience, with the green spaces of Hyde Park, the boutiques of Westbourne Grove, and excellent transport links via Bayswater (Circle and District lines) and Queensway (Central line) tube stations, all a short walk away.



Kitchen

Principal Bedroom





En-Suite

Juliet Balcony



FEATURES

Three Bedrooms	Open-Plan
En-Suite Principal Bathroom	Reception/Dining/Kitchen
Family Bathroom	Juliet Balcony

OTHER USEFUL INFORMATION

EPC	C
Council Tax Band	G

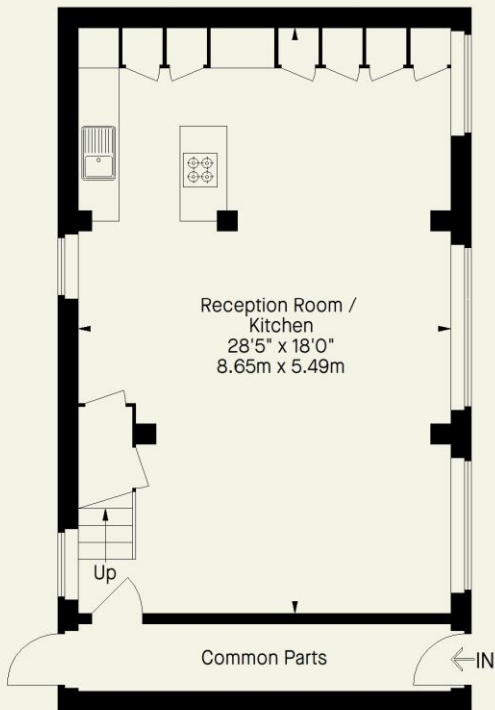
NEAREST TUBE STATIONS

Bayswater (Circle and District lines) and Queensway (Central line)

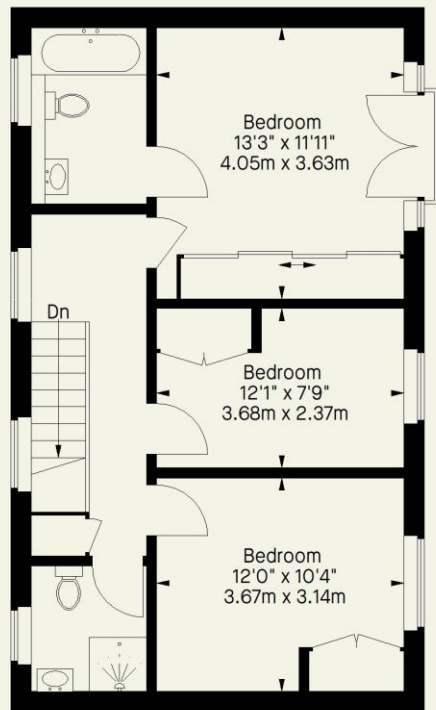
St. Petersburg Mews, W2

Approximate Gross Internal Area
(Excluding Common Parts)

1095 FT² - 101.8 M²



Ground Floor



First Floor

Whilst every attempt has been made to ensure the accuracy of the floorplan contained here, measurements of doors, windows, rooms and any other item are approximate and no responsibility is taken for any error, omission, or misstatement. This plan is for guidance only and must not be relied upon as a statement of fact. Attention is drawn to the important notice on the last page of the text in the particulars.

Hyde Park
37-41 Sussex Place, Hyde Park,
London W2 2TH

South Kensington
4-5 Kynance Place, South Kensington,
London SW7 4QS

WWW.LUROTBRAND.CO.UK



Members of NAEA, ARLA, onthemarket.com. Lurot Brand (2) Limited T/A Lurot Brand. Registered in England No. 02035540. Registered Office: 37-41 Sussex Place, London, W2 2TH. VAT No. 629 099 505. www.lurotbrand.co.uk

We have produced these sales particulars as a general guide. We have not carried out a detailed survey of the property and have not tested the services, appliances, or specific fittings. Room sizes are for general guidance purposes and should not be relied upon for fitting carpets or furnishings. Pictures may have been digitally enhanced. Floor plans are not to scale. Fittings shown on floor plans may not match the actual layout or size of fittings at the property. None of the statements as to the property contained in these particulars are to be relied upon as statements or representations of fact. Any reference to alterations to, or use of, any part of the property does not mean that any necessary planning, building regulations or other consent has been obtained. A buyer or lessee must find out by inspection or in other ways that these matters have been properly dealt with and that all information is correct.

All statements in these particulars as to this property are made without responsibility on the part of Lurot Brand. The Seller does not make or give and neither Lurot Brand or any person in their employment has any authority to make or give any representation or warranty whatever in relation to this property.