



# Bathurst Mews, W2

**LUROT BRAND**

MEWS SPECIALISTS EST. 1971

020 7590 9955  
sales@lurotbrand.co.uk



Ground Floor

Ground Floor



# Bathurst Mews, W2

Freehold

£1,700,000 STC

---

A two-bedroom mews house in one of the most desirable streets in W2.

A perfect example of a London pied-a-terre. This contemporary designed two-bedroom mews house offers plenty of natural light, a modern open plan kitchen and reception room, two bathrooms, and plenty of storage throughout. Perfect for entertaining and enjoying the mews, the inclusion of French doors on the ground floor seamlessly blends indoor-outdoor living and floods the space with natural light. The Juliet balcony on the first floor adds to the overall charm.

## LOCATION

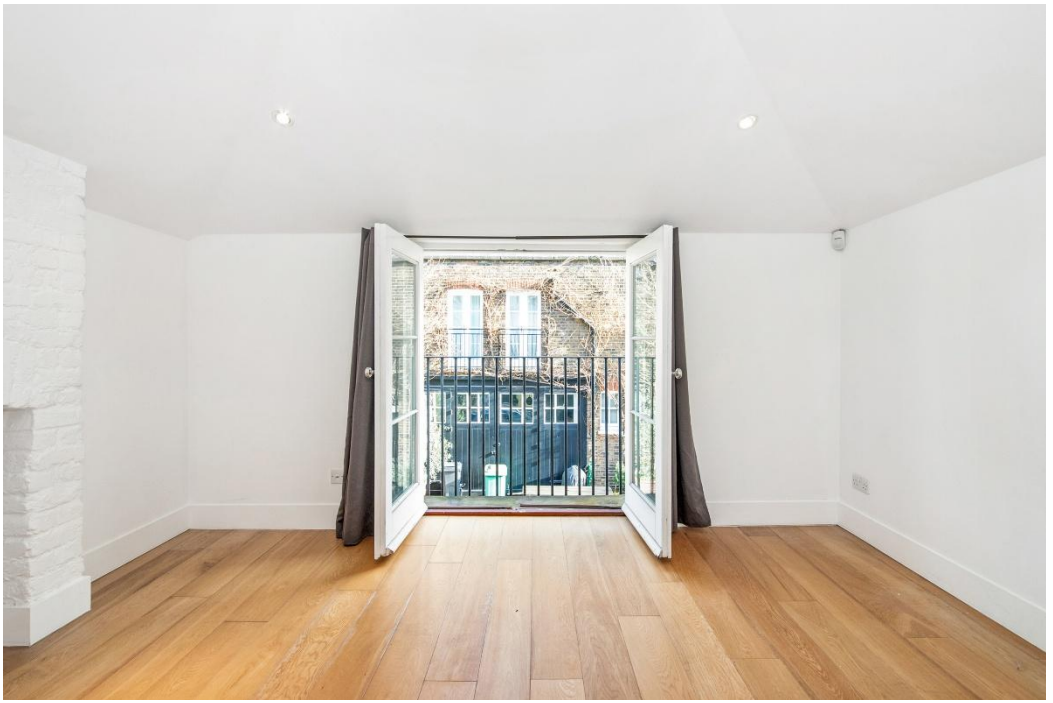
Bathurst Mews is one of the prettiest mews streets in London nestled in an enviable location part of the Hyde Park Estate. Kensington Gardens and Hyde Park are all very close by. There are excellent transport links from Paddington Station and Lancaster Gate as well as the local shops and amenities of Connaught Village.



Ground Floor

First Floor





First Floor

External



## FEATURES

Two Bedrooms

---

Reception Room

---

Open Plan Kitchen/Dining

---

Two Bathrooms

---

Juliet Balcony

---

French Doors

---

## OTHER USEFUL INFORMATION

EPC

---

D

Council Tax Band

---

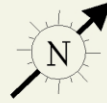
G

## NEAREST TUBE STATIONS

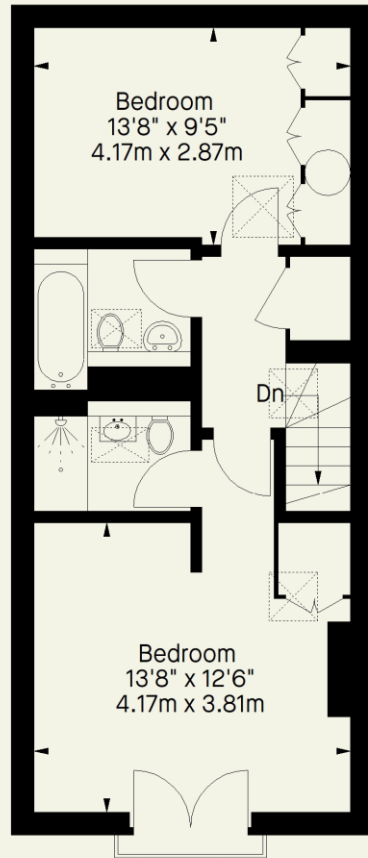
Paddington Station & Lancaster Gate Station (Circle, Picadilly, Central, Hammersmith & City, Elizabeth Line, National Rail)

# Bathurst Mews, W2

Approximate Gross Internal Area  
927 FT<sup>2</sup> - 86.1 M<sup>2</sup>



**Ground Floor**



**First Floor**

Whilst every attempt has been made to ensure the accuracy of the floorplan contained here, measurements of doors, windows, rooms and any other item are approximate and no responsibility is taken for any error, omission, or misstatement. This plan is for guidance only and must not be relied upon as a statement of fact. Attention is drawn to the important notice on the last page of the text in the particulars.

Hyde Park  
37-41 Sussex Place, Hyde Park,  
London W2 2TH

South Kensington  
4-5 Kynance Place, South Kensington,  
London SW7 4QS

[WWW.LUROTBRAND.CO.UK](http://WWW.LUROTBRAND.CO.UK)



Members of NAEA, ARLA, onthemarket.com. Lurot Brand (2) Limited T/A Lurot Brand. Registered in England No. 02035540. Registered Office: 37-41 Sussex Place, London, W2 2TH. VAT No. 629 099 505. [www.lurotbrand.co.uk](http://www.lurotbrand.co.uk)

We have produced these sales particulars as a general guide. We have not carried out a detailed survey of the property and have not tested the services, appliances, or specific fittings. Room sizes are for general guidance purposes and should not be relied upon for fitting carpets or furnishings. Pictures may have been digitally enhanced. Floor plans are not to scale. Fittings shown on floor plans may not match the actual layout or size of fittings at the property. None of the statements as to the property contained in these particulars are to be relied upon as statements or representations of fact. Any reference to alterations to, or use of, any part of the property does not mean that any necessary planning, building regulations or other consent has been obtained. A buyer or lessee must find out by inspection or in other ways that these matters have been properly dealt with and that all information is correct.

All statements in these particulars as to this property are made without responsibility on the part of Lurot Brand. The Seller does not make or give and neither Lurot Brand or any person in their employment has any authority to make or give any representation or warranty whatever in relation to this property.