



Brook Mews North, W2

LUROT BRAND

MEWS SPECIALISTS EST. 1971

020 7590 9955
sales@lurotbrand.co.uk



External

Ground Floor



Brook Mews North, W2

Leasehold – 970 yrs

£985,000 STC

A lateral two-bedroom mews flat,
moments from Hyde Park.

The property benefits from a large open plan living/dining room, a kitchen, a large primary bedroom with ensuite, a guest double bedroom, and a separate bathroom. The property offers plenty of built in storage, a large entrance, and offers good natural light throughout.

The flat has been designed to offer spacious living spaces.

LOCATION

Brook Mews North is located in the heart of Paddington, providing easy access to the local shops and restaurants on Craven Hill. Brook Mews North is near Paddington and Lancaster Gate stations.



Ground Floor

Ground Floor





Ground Floor

Ground Floor



FEATURES

Reception Room	Two Bedrooms
Dining Room	One Ensuite
Kitchen	Guest Bathroom

OTHER USEFUL INFORMATION

EPC	C
Council Tax Band	C
Annual Ground Rent	£250
Annual Service Charge	£5,000

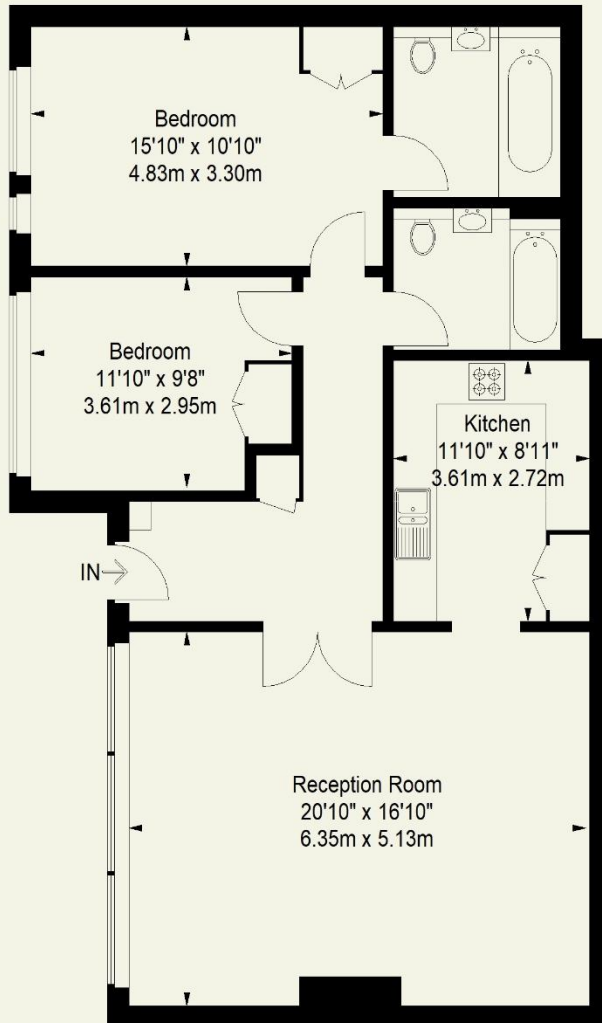
NEAREST TUBE STATIONS

Paddington Station & Lancaster Gate

Brook Mews North, W2

Approximate Gross Internal Area

996 FT² - 92.5 M²



Ground Floor

Whilst every attempt has been made to ensure the accuracy of the floorplan contained here, measurements of doors, windows, rooms and any other item are approximate and no responsibility is taken for any error, omission, or misstatement. This plan is for guidance only and must not be relied upon as a statement of fact. Attention is drawn to the important notice on the last page of the text in the particulars.

Hyde Park
37-41 Sussex Place, Hyde Park,
London W2 2TH

South Kensington
4-5 Kynance Place, South Kensington,
London SW7 4QS

WWW.LUROTBRAND.CO.UK



Members of NAEA, ARLA, onthemarket.com. Lurot Brand (2) Limited T/A Lurot Brand. Registered in England No. 02035540. Registered Office: 37-41 Sussex Place, London, W2 2TH. VAT No. 629 099 505. www.lurotbrand.co.uk

We have produced these sales particulars as a general guide. We have not carried out a detailed survey of the property and have not tested the services, appliances, or specific fittings. Room sizes are for general guidance purposes and should not be relied upon for fitting carpets or furnishings. Pictures may have been digitally enhanced. Floor plans are not to scale. Fittings shown on floor plans may not match the actual layout or size of fittings at the property. None of the statements as to the property contained in these particulars are to be relied upon as statements or representations of fact. Any reference to alterations to, or use of, any part of the property does not mean that any necessary planning, building regulations or other consent has been obtained. A buyer or lessee must find out by inspection or in other ways that these matters have been properly dealt with and that all information is correct.

All statements in these particulars as to this property are made without responsibility on the part of Lurot Brand. The Seller does not make or give and neither Lurot Brand or any person in their employment has any authority to make or give any representation or warranty whatever in relation to this property.