



Stanhope Mews South, SW7

LUROT BRAND

MEWS SPECIALISTS EST. 1971

020 7590 9955
sales@lurotbrand.co.uk



Ground Floor

Ground Floor



Stanhope Mews South, SW7

Freehold

£1,449,999 STC

A two-bedroom mews house, set within one of the most picturesque mews in Kensington.

Set across three floors, the property boasts a large reception room, two double bedrooms, an open plan kitchen and dining room, a lounge/office space, one ensuite bathroom, a guest bathroom, and a Juliet balcony. The property benefits from hardwood flooring throughout, impressive floor to ceiling height, and multiple skylights to enhance natural light.

As a wonderfully green and colourful mews, Stanhope Mews South has been used as the backdrop for popular films, such as the Kingsman.

LOCATION

Stanhope Mews South is located within easy reach of the shops, bars and restaurants of South Kensington, Gloucester Road, Palace Gate and High Street Kensington.



First Floor

First Floor





Lower Ground Floor

First Floor



FEATURES

Large Reception Room	Guest Bathroom
Two Bedrooms	Modern Kitchen
One Ensuite	Juliet Balcony

OTHER USEFUL INFORMATION

EPC	D
Council Tax Band	E

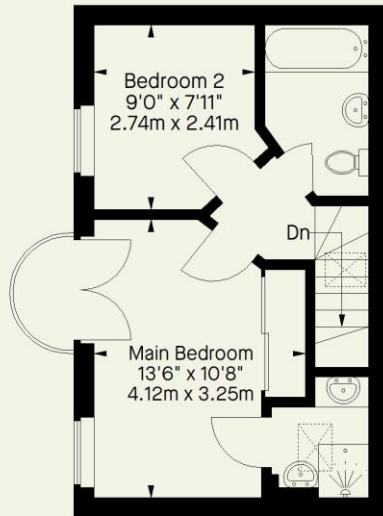
NEAREST TUBE STATIONS

Gloucester Road & South Kensington (Circle, District & Picadilly Lines)

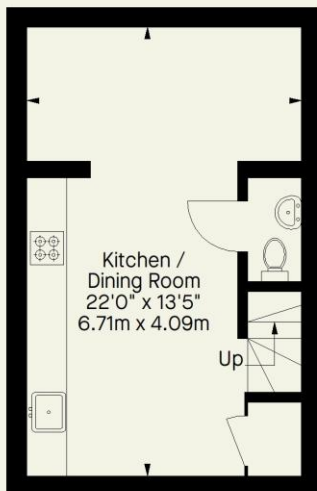
Stanhope Mews South, SW7

Approximate Gross Internal Area

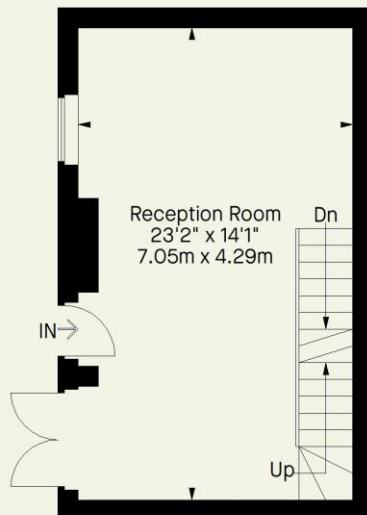
992 FT²- 92.2 M²



First Floor



Lower Ground Floor



Ground Floor

Whilst every attempt has been made to ensure the accuracy of the floorplan contained here, measurements of doors, windows, rooms and any other item are approximate and no responsibility is taken for any error, omission, or misstatement. This plan is for guidance only and must not be relied upon as a statement of fact. Attention is drawn to the important notice on the last page of the text in the particulars.

Hyde Park
37-41 Sussex Place, Hyde Park,
London W2 2TH

South Kensington
4-5 Kynance Place, South Kensington,
London SW7 4QS

WWW.LUROTBRAND.CO.UK



Members of NAEA, ARLA, onthemarket.com. Lurot Brand (2) Limited T/A Lurot Brand. Registered in England No. 02035540. Registered Office: 37-41 Sussex Place, London, W2 2TH. VAT No. 629 099 505. www.lurotbrand.co.uk

We have produced these sales particulars as a general guide. We have not carried out a detailed survey of the property and have not tested the services, appliances, or specific fittings. Room sizes are for general guidance purposes and should not be relied upon for fitting carpets or furnishings. Pictures may have been digitally enhanced. Floor plans are not to scale. Fittings shown on floor plans may not match the actual layout or size of fittings at the property. None of the statements as to the property contained in these particulars are to be relied upon as statements or representations of fact. Any reference to alterations to, or use of, any part of the property does not mean that any necessary planning, building regulations or other consent has been obtained. A buyer or lessee must find out by inspection or in other ways that these matters have been properly dealt with and that all information is correct.

All statements in these particulars as to this property are made without responsibility on the part of Lurot Brand. The Seller does not make or give and neither Lurot Brand or any person in their employment has any authority to make or give any representation or warranty whatever in relation to this property.