



# Cornwall Mews South, SW7

**LUROT BRAND**

MEWS SPECIALISTS EST. 1971

020 7590 9955  
[lettings@lurotbrand.co.uk](mailto:lettings@lurotbrand.co.uk)



Ground Floor

Ground Floor



# Cornwall Mews South, SW7

£1,142 PW

---

*An utterly charming two bed mews house in the heart of Kensington.*

With well-appointed accommodation over two floors, this property has recently been sympathetically renovated. Entered through Grenville Place or Cornwall Mews South, the ground floor consists of a modern kitchen and a dining room with the focal point being the large wood panelled sitting room, feeling more like a stately home than a mews house. The first floor has a master bedroom with en suite, a large guest bedroom and family bathroom. This property has plenty of period charm with all the benefits of a recent renovation.

## LOCATION

Cornwall Mews South is one of the most highly sought after mews streets in Kensington. Abutting Cornwall Gardens, moments from the shops and bars of Gloucester Road and High Street Kensington while also being a short walk to Hyde Park.





Ground Floor

First Floor





First Floor

First Floor



FEATURES

Two Bedrooms	Kitchen
Entrance Hall	En Suite Bathroom
Reception Room	Bathroom
Dining Room	

OTHER USEFUL INFORMATION

EPC	E
Council Tax Band	G
Deposit Amount	£0.00

NEAREST TUBE STATIONS

Gloucester Road (Circle, District & Piccadilly lines)

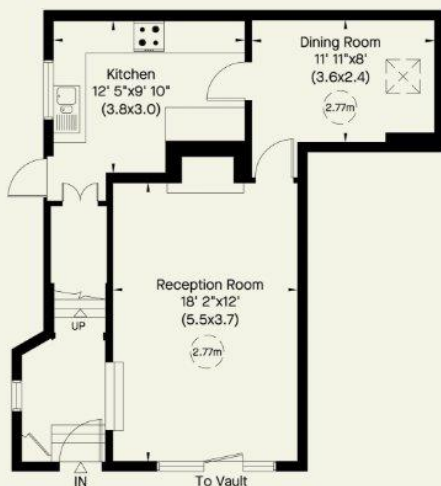
## Cornwall Mews South, SW7

Approximate Gross Internal Area

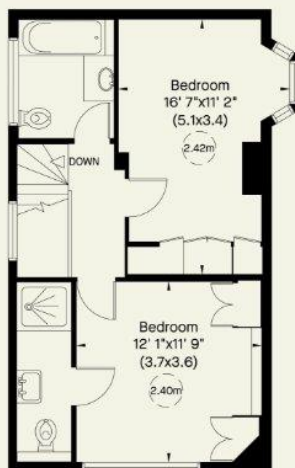
99 sq m/ 1068 sq ft Including Vault

93 sq m/ 1006 sq ft Excluding Vault

Not to Scale, for identification only



Ground Floor



First Floor

Hyde Park  
37-41 Sussex Place, Hyde Park,  
London W2 2TH

South Kensington  
4-5 Kynance Place, South Kensington,  
London SW7 4QS

**WWW.LUROTBRAND.CO.UK**



Members of NAEA, ARLA, onthemarket.com. Lurot Brand (2) Limited T/A Lurot Brand. Registered in England No. 02035540. Registered Office: 37-41 Sussex Place, London, W2 2TH. VAT No. 629 099 505. [www.lurotbrand.co.uk](http://www.lurotbrand.co.uk)

---

We have produced these sales particulars as a general guide. We have not carried out a detailed survey of the property and have not tested the services, appliances, or specific fittings. Room sizes are for general guidance purposes and should not be relied upon for fitting carpets or furnishings. Pictures may have been digitally enhanced. Floor plans are not to scale. Fittings shown on floor plans may not match the actual layout or size of fittings at the property. None of the statements as to the property contained in these particulars are to be relied upon as statements or representations of fact. All statements in these particulars as to this property are made without responsibility on the part of Lurot Brand. The Seller does not make or give and neither Lurot Brand or any person in their employment has any authority to make or give any representation or warranty whatever in relation to this property.