



Huntsworth Mews, NW1

LUROT BRAND

MEWS SPECIALISTS EST. 1971

020 7590 9955
sales@lurotbrand.co.uk



Balcony

Kitchen



Huntsworth Mews, NW1

Freehold

£2,250,000

A modern and spacious 2 bedroom mews house, which is just moments away from the heart of Marylebone and Regent's Park.

Spread across four floors, this mews house offers a large reception room on the lower ground floor with direct access to a patio and guest loo. On the ground floor there is an open plan kitchen and breakfast room which is perfect for entertaining. The first floor hosts an ensuite guest bedroom, with twin double doors opening to Juliet balconies, which flood the room with natural light. There is also a further bathroom next door. The second floor boasts the second bedroom, with an ensuite shower room and separate loo. It has access to an impressive balcony offering a large amount of outdoor space.

LOCATION

Huntsworth Mews is ideally located for all amenities that the affluent area of Marylebone offers, furthermore the open green spaces of Regent's Park is just a short walk away. Excellent transport links are nearby, including Baker Street and Marylebone stations.



Bedroom

Bathroom





Bedroom

Reception



FEATURES

| | |
|------------------------|----------------|
| 2 Bedrooms | Patio |
| 2 Ensuite Bathrooms | Balcony |
| Family Bathroom | Reception Room |
| Kitchen/Breakfast Room | |

OTHER USEFUL INFORMATION

| | |
|------------------|---|
| EPC | C |
| Council Tax Band | G |

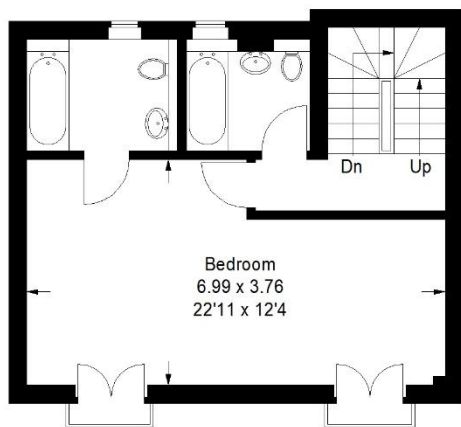
NEAREST TUBE STATIONS

| |
|---|
| Marylebone Station (Bakerloo Line) Baker Street (Bakerloo, Circle, Hammersmith & City, Jubilee, Metropolitan |
|---|

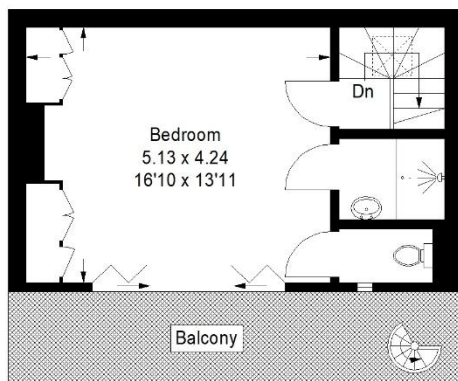
Huntsworth Mews, NW1

Approximate Gross Internal Area

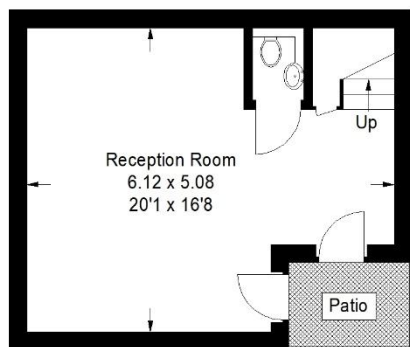
136.8 sq m / 1472 sq ft



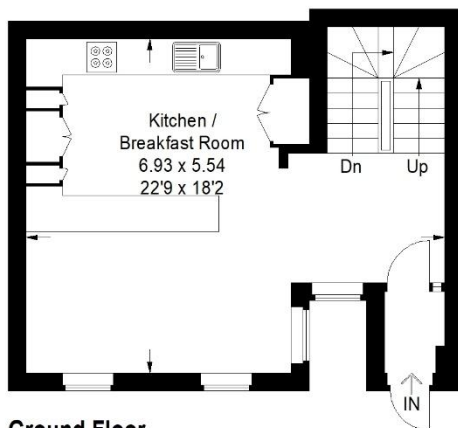
First Floor



Second Floor



Lower Ground Floor



Ground Floor

This plan is for layout guidance only. Not drawn to scale unless stated. Windows and door openings are approximate. Whilst every care is taken in the preparation of this plan, please check all dimensions, shapes and compass bearings before making any decisions reliant upon them. (ID1223825)

Hyde Park
37-41 Sussex Place, Hyde Park,
London W2 2TH

South Kensington
4-5 Kynance Place, South Kensington,
London SW7 4QS

WWW.LUROTBRAND.CO.UK



Members of NAEA, ARLA, onthemarket.com. Lurot Brand (2) Limited T/A Lurot Brand. Registered in England No. 02035540. Registered Office: 37-41 Sussex Place, London, W2 2TH. VAT No. 629 099 505. www.lurotbrand.co.uk

We have produced these sales particulars as a general guide. We have not carried out a detailed survey of the property and have not tested the services, appliances, or specific fittings. Room sizes are for general guidance purposes and should not be relied upon for fitting carpets or furnishings. Pictures may have been digitally enhanced. Floor plans are not to scale. Fittings shown on floor plans may not match the actual layout or size of fittings at the property. None of the statements as to the property contained in these particulars are to be relied upon as statements or representations of fact. Any reference to alterations to, or use of, any part of the property does not mean that any necessary planning, building regulations or other consent has been obtained. A buyer or lessee must find out by inspection or in other ways that these matters have been properly dealt with and that all information is correct.

All statements in these particulars as to this property are made without responsibility on the part of Lurot Brand. The Seller does not make or give and neither Lurot Brand or any person in their employment has any authority to make or give any representation or warranty whatever in relation to this property.