



Elnathan Mews, W9

LUROT BRAND

MEWS SPECIALISTS EST. 1971

020 7590 9955
sales@lurotbrand.co.uk



First Floor

Ground Floor



Elnathan Mews, W9

Freehold

£1,600,000 STC

A bright three-bedroom mews house in the heart of Little Venice.

Benefitting from a south-facing orientation the property is wonderfully light. On the ground floor is a kitchen, a large dining room with vaulted ceilings giving an excellent sense of space and light, and a garage. On the first floor is a generous reception room with light front and rear and a Juliet balcony, alongside a guest bedroom. The second floor hosts the principal bedroom with ensuite, a second guest bedroom and a separate bathroom.

(Please note the interior furniture has been virtually staged and is computer generated)

LOCATION

Elnathan Mews is set in the heart of Little Venice known for its canals, bistros and shops. The mews is also in easy reach of Warwick Avenue (5-mins walk) and Paddington station (15-mins walk), and the shops and restaurants of Formosa Street. The green spaces of Hyde Park and The Regent's Park are also nearby.



Ground Floor

First Floor





Second Floor

Second Floor



FEATURES

Freehold	Separate Dining Room
Three Bedrooms	Kitchen
Two Bathrooms (incl. ensuite)	Garage
Reception Room	W/C

OTHER USEFUL INFORMATION

EPC	D
Council Tax Band	G

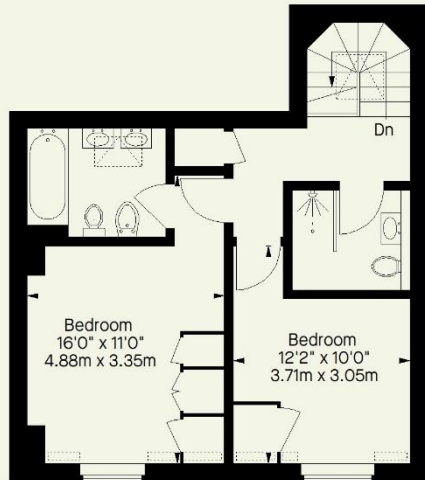
NEAREST TUBE STATIONS

Warwick Avenue (Bakerloo Line) & Paddington (Circle, District,
Hammersmith & City, Elizabeth Line, National Rail)


Elnathan Mews, W9

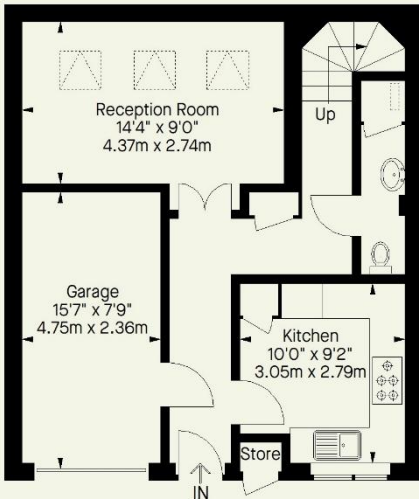
Approximate Gross Internal Area
(Including Garage / Excluding Void / Store)

1401 FT² - 130.2 M²

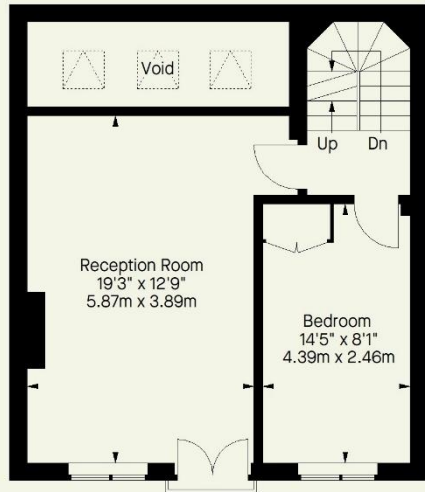


Second Floor

 = Reduced headroom below 1.5 m / 5'0"



Ground Floor



First Floor

Whilst every attempt has been made to ensure the accuracy of the floorplan contained here, measurements of doors, windows, rooms and any other item are approximate and no responsibility is taken for any error, omission, or misstatement. This plan is for guidance only and must not be relied upon as a statement of fact. Attention is drawn to the important notice on the last page of the text in the particulars.

Hyde Park
37-41 Sussex Place, Hyde Park,
London W2 2TH

South Kensington
4-5 Kynance Place, South Kensington,
London SW7 4QS

WWW.LUROTBRAND.CO.UK



Members of NAEA, ARLA, onthemarket.com. Lurot Brand (2) Limited T/A Lurot Brand. Registered in England No. 02035540. Registered Office: 37-41 Sussex Place, London, W2 2TH. VAT No. 629 099 505. www.lurotbrand.co.uk

We have produced these sales particulars as a general guide. We have not carried out a detailed survey of the property and have not tested the services, appliances, or specific fittings. Room sizes are for general guidance purposes and should not be relied upon for fitting carpets or furnishings. Pictures may have been digitally enhanced. Floor plans are not to scale. Fittings shown on floor plans may not match the actual layout or size of fittings at the property. None of the statements as to the property contained in these particulars are to be relied upon as statements or representations of fact. Any reference to alterations to, or use of, any part of the property does not mean that any necessary planning, building regulations or other consent has been obtained. A buyer or lessee must find out by inspection or in other ways that these matters have been properly dealt with and that all information is correct.

All statements in these particulars as to this property are made without responsibility on the part of Lurot Brand. The Seller does not make or give and neither Lurot Brand or any person in their employment has any authority to make or give any representation or warranty whatever in relation to this property.