



Adam & Eve Mews,  
W8

**LUROT BRAND**

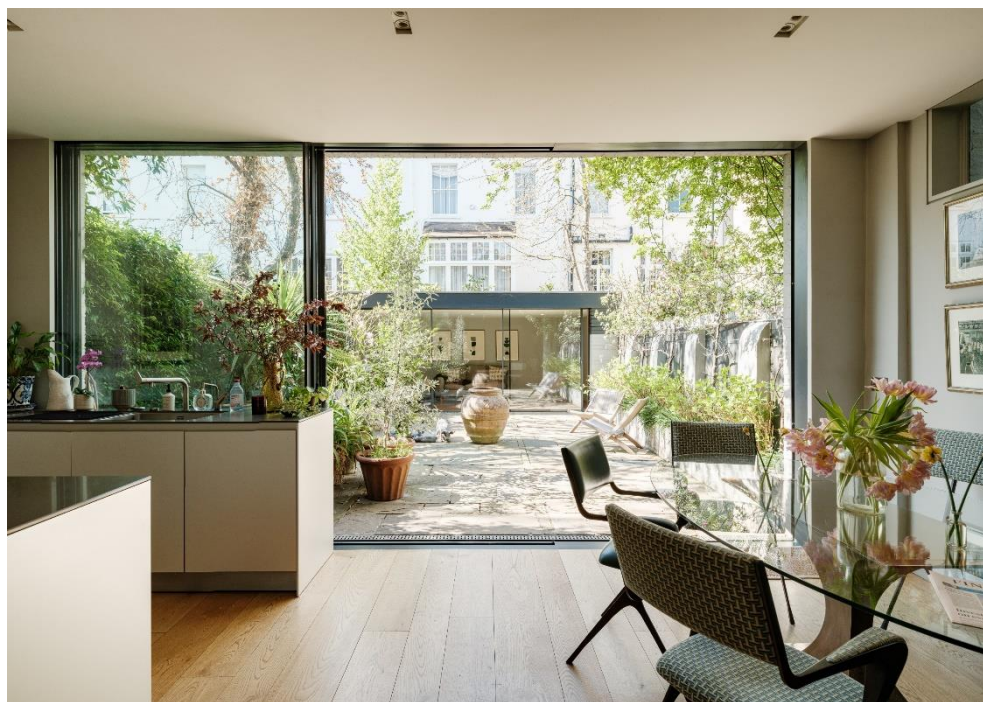
MEWS SPECIALISTS EST. 1971

020 7590 9955  
[sales@lurotbrand.co.uk](mailto:sales@lurotbrand.co.uk)



External

Ground Floor



# Adam & Eve Mews, W8

Freehold

£4,950,000 STC

---

A bright and spacious five-bedroom mews house, with a large garden, set within the prestigious Adam & Eve Mews.

This extraordinarily special, virtually detached freehold house, offers a home of immense charm and style, with windows on three sides, making it incredibly light and bright. The ground floor was comprehensively modernised in 2017 with floor-to-ceiling sliding glass leading onto the large garden and studio room. Upstairs are 4/5 bedrooms, one ensuite with two additional bathrooms and a shower room. The principal bedroom suite boasts charming views over gardens, and the two of the guest bedrooms benefit from their own terraces. The property also comes with its own off-street parking space.

## LOCATION

Adam & Eve Mews is a highly desirable cobbled mews street that runs South, via an arch, from High Street Kensington towards the Stratford and Abingdon Village area, surrounded by the shops, bars and restaurants. Holland Park and Kensington Gardens are a short walk away.





Ground Floor

Ground Floor





First Floor

First Floor



FEATURES

Off Street Parking	Kitchen/Dining Room
Two Terraces	Reception Room
Garden	Five Bedrooms
Office/Studio	Three Bathrooms

OTHER USEFUL INFORMATION

EPC	C
Council Tax Band	H

NEAREST TUBE STATIONS

High Street Kensington (Circle & District lines)

# Adam and Eve Mews, W8

Approximate Gross Internal Area

214 sq m (2302 sq ft) Including Under 1.5m and Office/Studio

187 sq m (2008 sq ft) Excluding Under 1.5m and Office/Studio

Not to Scale, for identification only



Ground Floor



First Floor



Second Floor

For guidance only and must not be relied upon as a statement of fact.

All measurements and areas are approximate only (and have been prepared in accordance with the current edition of the RICS Code of Measuring Practice).



Hyde Park  
37-41 Sussex Place, Hyde Park,  
London W2 2TH

South Kensington  
4-5 Kynance Place, South Kensington,  
London SW7 4QS

**WWW.LUROTBRAND.CO.UK**



Members of NAEA, ARLA, onthemarket.com. Lurot Brand (2) Limited T/A Lurot Brand. Registered in England No. 02035540. Registered Office: 37-41 Sussex Place, London, W2 2TH. VAT No. 629 099 505. [www.lurotbrand.co.uk](http://www.lurotbrand.co.uk)

We have produced these sales particulars as a general guide. We have not carried out a detailed survey of the property and have not tested the services, appliances, or specific fittings. Room sizes are for general guidance purposes and should not be relied upon for fitting carpets or furnishings. Pictures may have been digitally enhanced. Floor plans are not to scale. Fittings shown on floor plans may not match the actual layout or size of fittings at the property. None of the statements as to the property contained in these particulars are to be relied upon as statements or representations of fact. Any reference to alterations to, or use of, any part of the property does not mean that any necessary planning, building regulations or other consent has been obtained. A buyer or lessee must find out by inspection or in other ways that these matters have been properly dealt with and that all information is correct.

All statements in these particulars as to this property are made without responsibility on the part of Lurot Brand. The Seller does not make or give and neither Lurot Brand or any person in their employment has any authority to make or give any representation or warranty whatever in relation to this property.