

LUROT BRAND



Russell Gardens Mews, W14



Russell Gardens Mews, W14

Freehold | £2,000,000

1603 Sq Ft | 149 Sq M

3 Bedrooms. 2 Bathrooms. 1 Reception.

Additional Information

EPC	TBC
Council Tax Band	E
Council	Kensington & Chelsea

The Property

A rare off-plan opportunity which is due for completion in October 2025. The final product will be modern luxury in a stunningly renovated and extended three-bedroom, two-bathroom mews house, nestled in the sought-after Holland Park area. The renovation will boast sleek contemporary design with high-end fixtures and fittings throughout. A particular highlight will be the inclusion of rear windows, a Juliet balcony, and numerous skylights to enhance natural light across all living spaces. Prospective buyers will have the option to select between a handful of specifications, finishes and colour palettes.





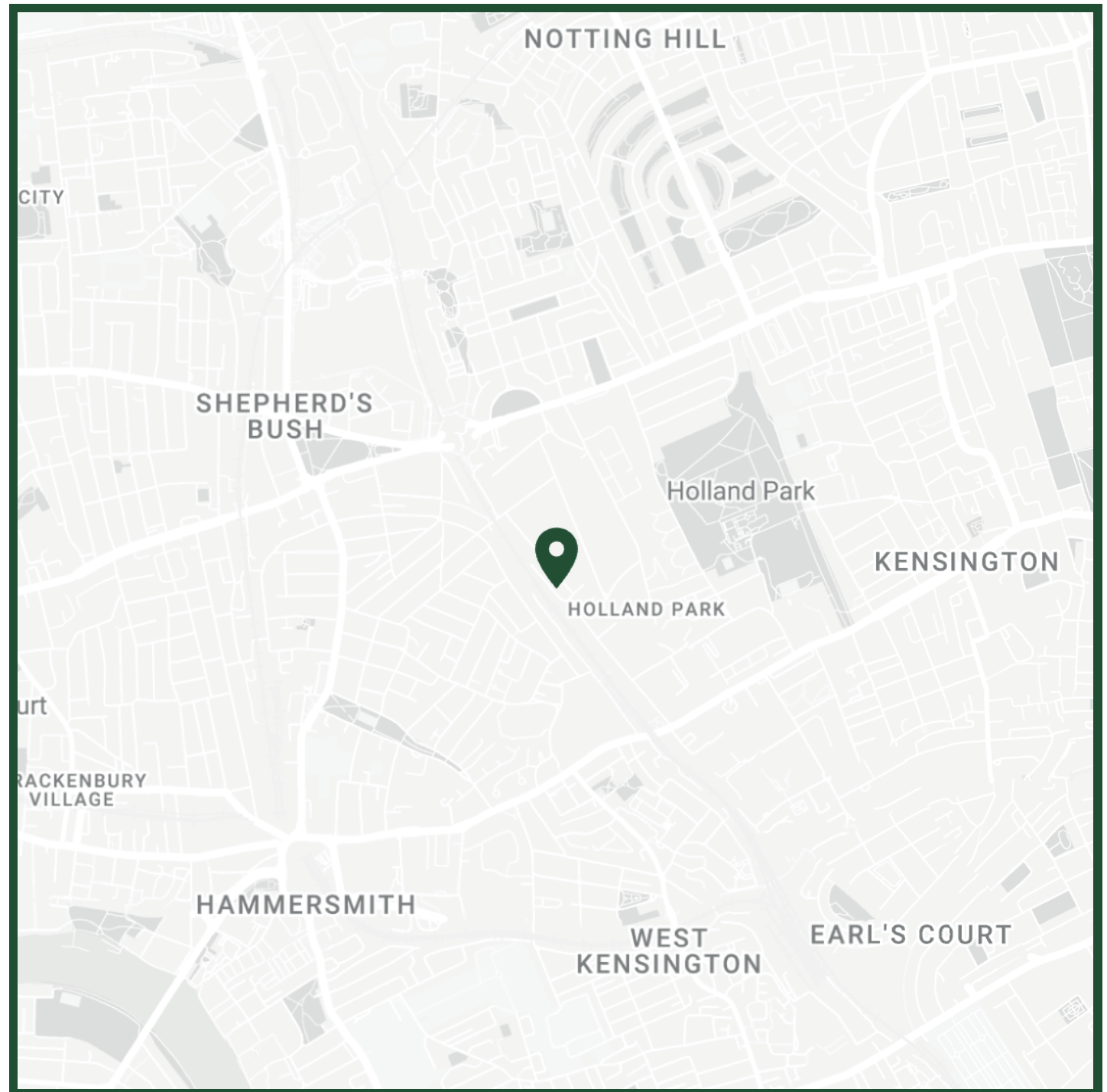


Project Timeline



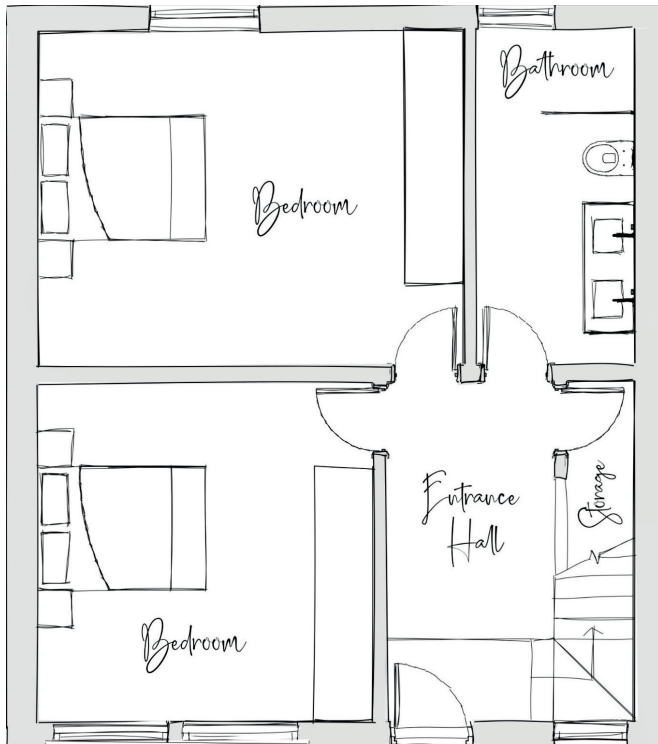
Location

Russell Gardens Mews is ideally positioned between Holland Park and Shepherd's Bush, offering a quiet residential setting with excellent access to nearby amenities. The green open spaces of Holland Park are just a short walk away, along with the boutiques, cafés, and restaurants of Holland Park Avenue. Kensington Olympia Overground station is moments away, while Holland Park and Shepherd's Bush Underground stations provide fast and convenient access to the West End, the City, and beyond.

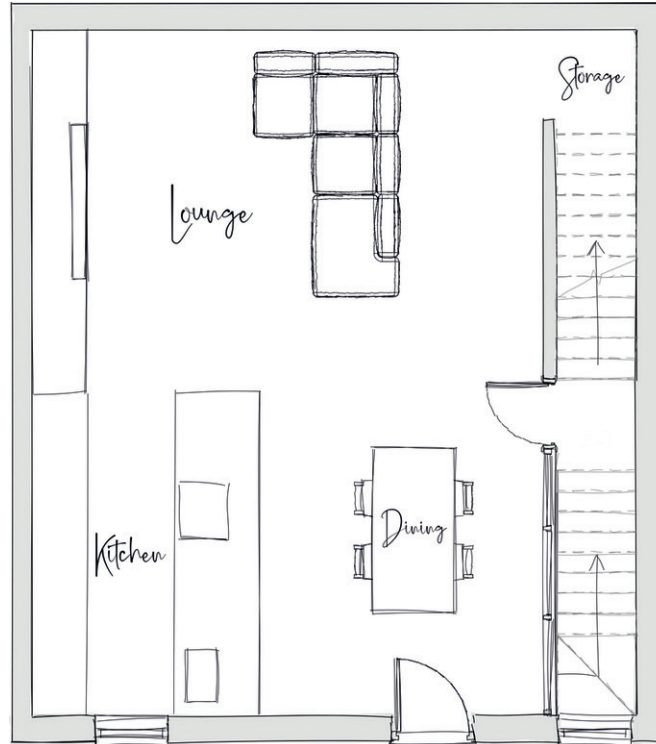


Floorplans

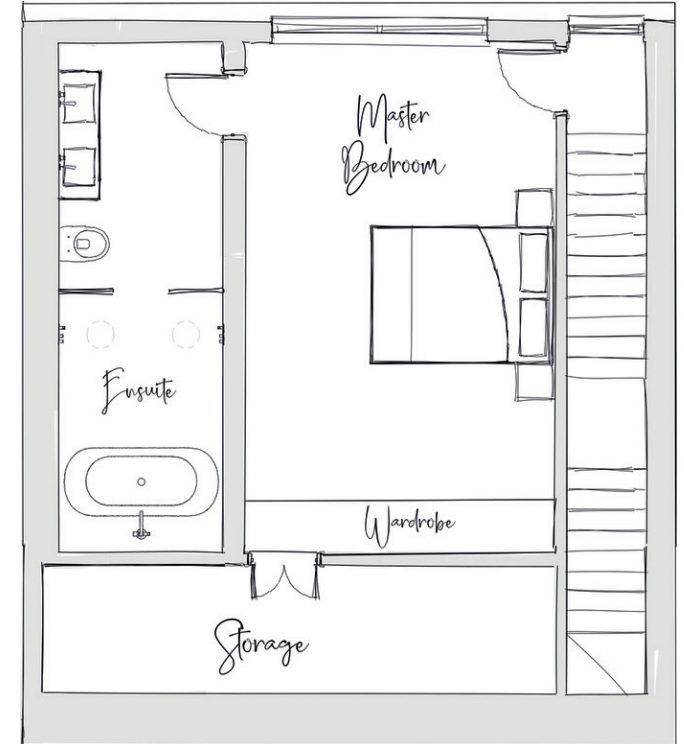
Approx Gross Internal Area:
141 Sq M - 1517 Sq Ft (Including Storage) 149 Sq M - 1603 Sq Ft)



Ground Floor
49 Sq M - 527 Sq Ft



First Floor
48 Sq M - 517 Sq Ft



Second Floor
44 Sq M - 474 Sq Ft



Contact Us

Mike Lurot

+44 (0)20 7590 1912

mike@lurotbrand.co.uk

South Kensington

4-5 Kynance Place

London

SW7 4QS

020 7479 1999

sales@lurotbrand.co.uk

South Kensington

4-5 Kynance Place
London
SW7 4QS

Hyde Park

37-41 Sussex Place
London
W2 2TH

Book a market appraisal

sales@lurotbrand.co.uk

Follow us



www.lurotbrand.co.uk

Lurot Brand (2) Limited T/A Lurot Brand. Registered in England No.02035540. Registered Office: 37-41 Sussex Place, London, W2 2TH. VAT No. 629 099 505.

In accordance with the Property Mis-Description Act 1991, the following details have been prepared in good faith, and are not intended to constitute part of an offer or contract. Any information contained herein (whether in the text, plans or photographs) is given in good faith but should not be relied upon as being a statement of representation of fact. Nothing in these Particulars shall be deemed to be a statement that the property is in good condition or otherwise nor that any services or facilities are in good working order. Any measurements of distances referred to herein are approximate only. May 2025