



Hansard Mews, W14

LUROT BRAND

MEWS SPECIALISTS EST. 1971

020 7590 9955
sales@lurotbrand.co.uk



Ground Floor

Ground Floor



Hansard Mews, W14

Freehold

£599,500 STC

A charming ground floor mews property set within a cobbled street with plenty of greenery.

The flat offers a bright and spacious living room with space for a dining area, a separate kitchen, bathroom, and store cupboard. A particular highlight is the large bedroom which comes with plenty of built-in storage. The property also benefits from its own separate garage. The mews comes with on-street residence parking, perfect for those wishing to park their car in the mews.

LOCATION

This charming cobbled mews is positioned within the Royal Borough of Kensington and Chelsea and runs parallel to Holland Road. Perfectly located for access to a wide array of local shops and restaurants including the luxury of having Westfield suitably located close by for more extensive shopping and entertaining.



Ground Floor

Ground Floor





Ground Floor

Ground Floor



FEATURES

Ground Floor Flat

One Bedroom

Kitchen

Bathroom

Reception Room

Separate Garage

OTHER USEFUL INFORMATION

EPC

E

Council Tax Band

E

NEAREST TUBE STATIONS

Shepherds Bush (Central & Overground lines)

Hansard Mews, W14

Approximate Gross Internal Area

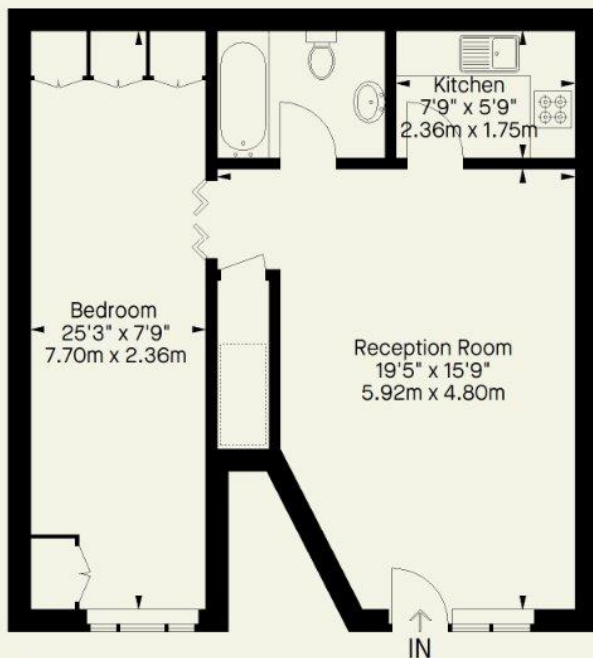
575 FT² - 53.4 M²

Garage = 212 FT² - 19.7 M²

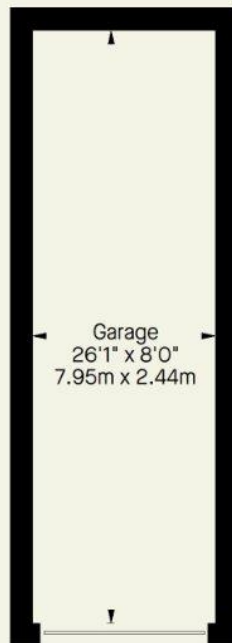
Total = 787 FT² - 73.1 M²



 = Reduced headroom below 1.5 m / 5'0



Ground Floor



(Not Shown In Actual
Location / Orientation)

Whilst every attempt has been made to ensure the accuracy of the floorplan contained here, measurements of doors, windows, rooms and any other item are approximate and no responsibility is taken for any error, omission, or misstatement. This plan is for guidance only and must not be relied upon as a statement of fact. Attention is drawn to the important notice on the last page of the text in the particulars.

Hyde Park
37-41 Sussex Place, Hyde Park,
London W2 2TH

South Kensington
4-5 Kynance Place, South Kensington,
London SW7 4QS

WWW.LUROTBRAND.CO.UK



Members of NAEA, ARLA, onthemarket.com. Lurot Brand (2) Limited T/A Lurot Brand. Registered in England No. 02035540. Registered Office: 37-41 Sussex Place, London, W2 2TH. VAT No. 629 099 505. www.lurotbrand.co.uk

We have produced these sales particulars as a general guide. We have not carried out a detailed survey of the property and have not tested the services, appliances, or specific fittings. Room sizes are for general guidance purposes and should not be relied upon for fitting carpets or furnishings. Pictures may have been digitally enhanced. Floor plans are not to scale. Fittings shown on floor plans may not match the actual layout or size of fittings at the property. None of the statements as to the property contained in these particulars are to be relied upon as statements or representations of fact. Any reference to alterations to, or use of, any part of the property does not mean that any necessary planning, building regulations or other consent has been obtained. A buyer or lessee must find out by inspection or in other ways that these matters have been properly dealt with and that all information is correct.

All statements in these particulars as to this property are made without responsibility on the part of Lurot Brand. The Seller does not make or give and neither Lurot Brand or any person in their employment has any authority to make or give any representation or warranty whatever in relation to this property.