



# Eccleston Mews, SW1X

**LUROT BRAND**

MEWS SPECIALISTS EST. 1971

020 7590 9955  
[lettings@lurotbrand.co.uk](mailto:lettings@lurotbrand.co.uk)



Ground Floor

Ground Floor



# Eccleston Mews, SW1X

Furnished

£1,500 PW

---

*A beautiful, newly renovated home  
in heart of Belgravia.*

A short walk from both Green Park and Hyde Park this two bedroom property has been immaculately finished throughout. The ground floor offers large open plan living, with doors opening on to the patio. Two well proportioned bedrooms on the first floor, one with en-suite, and a separate family bathroom. The house is flooded with light throughout.



Ground Floor

Ground Floor





Ground Floor

Ground Floor



## FEATURES

Two bedrooms

---

Patio

---

Two bathrooms

---

Newly refurbished

---

Open plan kitchen/reception  
room

---

## OTHER USEFUL INFORMATION

EPC

---

C

Council Tax Band

---

H

Deposit Amount

---

£9,000.00

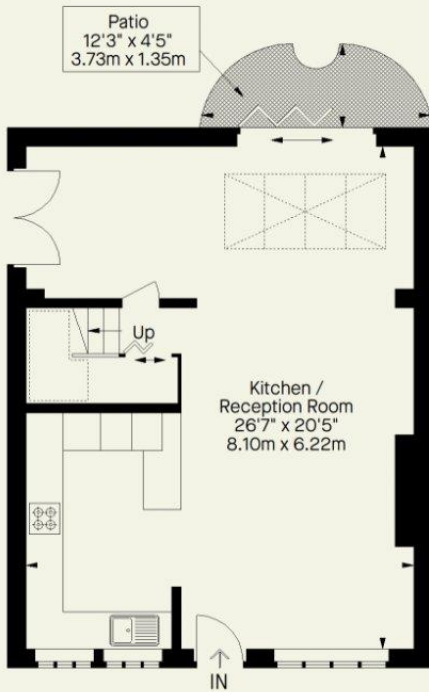
## NEAREST TUBE STATIONS

London Victoria Underground line and London Victoria Railway  
Station

---

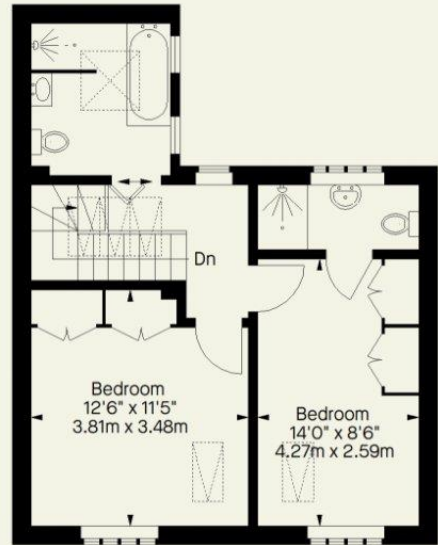
# Eccleston Mews, SW1x

Approximate Gross Internal Area  
988 FT<sup>2</sup> - 91.8 M<sup>2</sup>



**Ground Floor**

 = Reduced headroom below 1.5 m / 5'0



**First Floor**

Whilst every attempt has been made to ensure the accuracy of the floorplan contained here, measurements of doors, windows, rooms and any other item are approximate and no responsibility is taken for any error, omission, or misstatement. This plan is for guidance only and must not be relied upon as a statement of fact. Attention is drawn to the important notice on the last page of the text in the particulars.

Hyde Park  
37-41 Sussex Place, Hyde Park,  
London W2 2TH

South Kensington  
4-5 Kynance Place, South Kensington,  
London SW7 4QS

**WWW.LUROTBRAND.CO.UK**



Members of NAEA, ARLA, onthemarket.com. Lurot Brand (2) Limited T/A Lurot Brand. Registered in England No. 02035540. Registered Office: 37-41 Sussex Place, London, W2 2TH. VAT No. 629 099 505. [www.lurotbrand.co.uk](http://www.lurotbrand.co.uk)

---

We have produced these sales particulars as a general guide. We have not carried out a detailed survey of the property and have not tested the services, appliances, or specific fittings. Room sizes are for general guidance purposes and should not be relied upon for fitting carpets or furnishings. Pictures may have been digitally enhanced. Floor plans are not to scale. Fittings shown on floor plans may not match the actual layout or size of fittings at the property. None of the statements as to the property contained in these particulars are to be relied upon as statements or representations of fact. All statements in these particulars as to this property are made without responsibility on the part of Lurot Brand. The Seller does not make or give and neither Lurot Brand or any person in their employment has any authority to make or give any representation or warranty whatever in relation to this property.