



# Norfolk Square Mews, W2

**LUROT BRAND**

MEWS SPECIALISTS EST. 1971

020 7590 9955  
sales@lurotbrand.co.uk



Lower Ground Floor

Lower Ground Floor



# Norfolk Square

## Mews, W2

Freehold

£2,400,000 STC

---

### Modern family house moments from excellent communications.

Outstanding new mews development offering family living moments from London's primary transport hub. Flooded with natural light, this family development has been cleverly designed to maximise space for practical family living. Throughout, there is a ventilation system with heat recovery and the property still benefits from an NHBC guarantee.

#### LOCATION

Norfolk Square Mews is quiet and gated, situated within a private cul-de-sac accessed via electronic gates, with allocated private parking. The well maintained gardens within Norfolk Square are moments away.

Paddington is surrounded by shops, bars and restaurants and the green space of Hyde Park is a short walk away. There are also great transport links from Lancaster Gate or Paddington station.



Lower Ground Floor

Lower Ground Floor







Lower Ground Floor

Second Floor



## FEATURES

Kitchen/Dining Room

---

Four Bedrooms

---

Reception Room

---

Three En Suite Bathrooms

---

Utility Room

---

W/C

---

## OTHER USEFUL INFORMATION

EPC

---

D

Council Tax Band

---

H

---

## NEAREST TUBE STATIONS

Paddington (Circle, District, Bakerloo, Elizabeth and

---

Hammersmith & City lines)

---

# Norfolk Square Mews, W2

Approximate Gross Internal Area

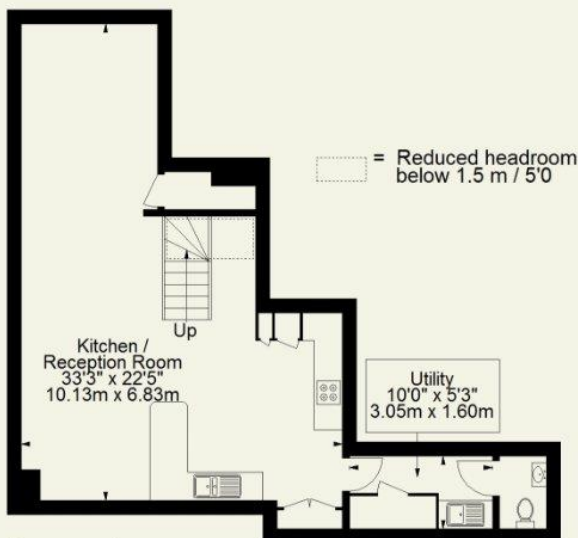
2060 FT<sup>2</sup> - 191.4 M<sup>2</sup>



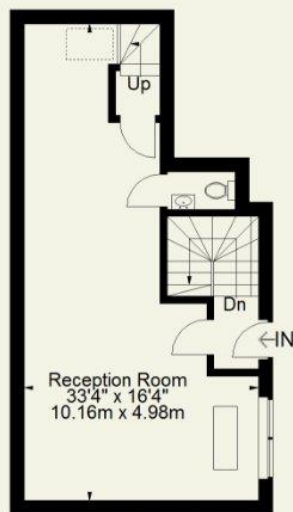
**Second Floor**



**First Floor**



**Basement**



**Ground Floor**

Whilst every attempt has been made to ensure the accuracy of the floorplan contained here, measurements of doors, windows, rooms and any other item are approximate and no responsibility is taken for any error, omission, or misstatement. This plan is for guidance only and must not be relied upon as a statement of fact. Attention is drawn to the important notice on the last page of the text in the particulars.

Notting Hill  
8 Ladbroke Grove, Notting Hill,  
London W11 3BG

Hyde Park  
37-41 Sussex Place, Hyde Park,  
London W2 2TH

South Kensington  
4-5 Kynance Place, South Kensington,  
London SW7 4QS

**WWW.LUROTBRAND.CO.UK**



Members of NAEA, ARLA, onthemarket.com. Lurot Brand (2) Limited T/A Lurot Brand. Registered in England No. 02035540. Registered Office: 37-41 Sussex Place, London, W2 2TH. VAT No. 629 099 505. [www.lurotbrand.co.uk](http://www.lurotbrand.co.uk)

We have produced these sales particulars as a general guide. We have not carried out a detailed survey of the property and have not tested the services, appliances, or specific fittings. Room sizes are for general guidance purposes and should not be relied upon for fitting carpets or furnishings. Pictures may have been digitally enhanced. Floor plans are not to scale. Fittings shown on floor plans may not match the actual layout or size of fittings at the property. None of the statements as to the property contained in these particulars are to be relied upon as statements or representations of fact. Any reference to alterations to, or use of, any part of the property does not mean that any necessary planning, building regulations or other consent has been obtained. A buyer or lessee must find out by inspection or in other ways that these matters have been properly dealt with and that all information is correct.

All statements in these particulars as to this property are made without responsibility on the part of Lurot Brand. The Seller does not make or give and neither Lurot Brand or any person in their employment has any authority to make or give any representation or warranty whatever in relation to this property.