



Ennismore Gardens Mews, SW7

LUROT BRAND

MEWS SPECIALISTS EST. 1971

020 7590 9955
sales@lurotbrand.co.uk



First Floor

First Floor



Ennismore Gardens Mews, SW7

Freehold - £2,600,000 STC

A three-bedroom mews house, in a picturesque, cobbled mews in Knightsbridge.

For a mews house, this property benefits from lateral space and plenty of natural light with windows both front and rear, including a Juliet balcony, and outdoor terrace.

The property offers two double bedrooms with two ensembles, a large walk-in wardrobe, a third bedroom which can also be used as an office/gym, and a particularly bright open plan living and dining area with kitchen.

The property also benefits from air conditioning, under-floor heating, and a large integral garage.

LOCATION

Ennismore Gardens Mews is situated at walking distance from Hyde Park, and famous locations such as the Royal Albert Hall, Harrods and the Natural History Museum.



First Floor

Ground Floor





Lower Ground Floor

External



FEATURES

Three Bedrooms	Garage
Living Room	Ensuite Bathroom
Kitchen/Dining Room	Office/Gym
Outdoor Balcony	Juliet Balcony

OTHER USEFUL INFORMATION

EPC	D
Council Tax Band	G

NEAREST TUBE STATIONS

South Kensington Station (Circle, District, Picadilly)
--

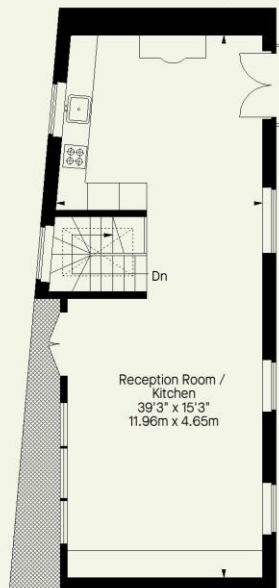
Ennismore Gardens Mews, SW7

Approximate Gross Internal Area

1608 FT² - 149.4 M²

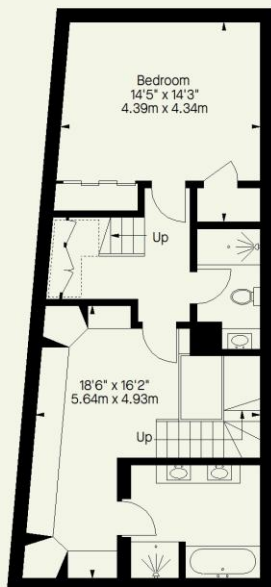
Garage = 158 FT² - 14.7 M²

Total = 1766 FT² - 165.1 M²

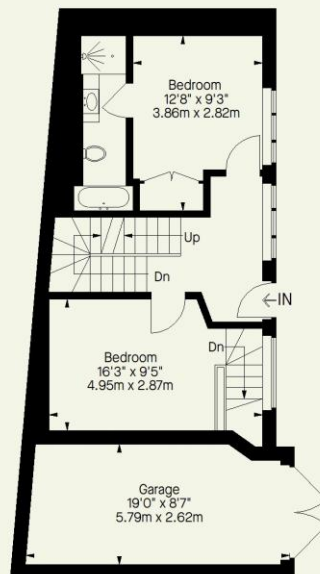


First Floor

Reduced headroom below 1.5 m / 5'0"



Basement



Ground Floor

Whilst every attempt has been made to ensure the accuracy of the floorplan contained here, measurements of doors, windows, rooms and any other item are approximate and no responsibility is taken for any error, omission, or misstatement. This plan is for guidance only and must not be relied upon as a statement of fact. Attention is drawn to the important notice on the last page of the text in the particulars.

Hyde Park
37-41 Sussex Place, Hyde Park,
London W2 2TH

South Kensington
4-5 Kynance Place, South Kensington,
London SW7 4QS

WWW.LUROTBRAND.CO.UK



Members of NAEA, ARLA, onthemarket.com. Lurot Brand (2) Limited T/A Lurot Brand. Registered in England No. 02035540. Registered Office: 37-41 Sussex Place, London, W2 2TH. VAT No. 629 099 505. www.lurotbrand.co.uk

We have produced these sales particulars as a general guide. We have not carried out a detailed survey of the property and have not tested the services, appliances, or specific fittings. Room sizes are for general guidance purposes and should not be relied upon for fitting carpets or furnishings. Pictures may have been digitally enhanced. Floor plans are not to scale. Fittings shown on floor plans may not match the actual layout or size of fittings at the property. None of the statements as to the property contained in these particulars are to be relied upon as statements or representations of fact. Any reference to alterations to, or use of, any part of the property does not mean that any necessary planning, building regulations or other consent has been obtained. A buyer or lessee must find out by inspection or in other ways that these matters have been properly dealt with and that all information is correct.

All statements in these particulars as to this property are made without responsibility on the part of Lurot Brand. The Seller does not make or give and neither Lurot Brand or any person in their employment has any authority to make or give any representation or warranty whatever in relation to this property.