



Warren Mews, W1T

LUROT BRAND

MEWS SPECIALISTS EST. 1971

020 7590 9955
lettings@lurotbrand.co.uk



First Floor

First Floor



Warren Mews, W1T

Furnished

£1,750 PW

A beautifully refurbished three bedroom Mews house in one of Fitzrovia's most enviable streets.

This brand new mews house has undergone a stunning refurbishment. The ground floor offers a two bright, large bedrooms and bathrooms, one with en-suite.

The first floor offers open plan kitchen, with state of the art appliances, living area and ample storage. The top floor is home to a vast master bedroom and en-suite bathroom.

LOCATION

Warren Mews is located within close proximity of the shops, cafes & restaurants of Fitzrovia, transport links of Great Portland Street (Circle, Hammersmith & Metropolitan), Warren Street (North & Victoria) & Euston Station (Overground) and the open spaces of Regents Park is only a short walk away.



First Floor

Second Floor





Ground Floor

First Floor



FEATURES

3 Bedrooms	Furnished
3 Bathrooms	
Cul-De-Sac Mews	
Cobbled Street	

OTHER USEFUL INFORMATION

EPC	C
Council Tax Band	G
Deposit Amount	£10,500.00


NEAREST TUBE STATIONS

Great Portland Street (Circle, Hammersmith & Metropolitan), Warren Street (North & Victoria) & Euston Station (Overground)

Warren Mews, W1T

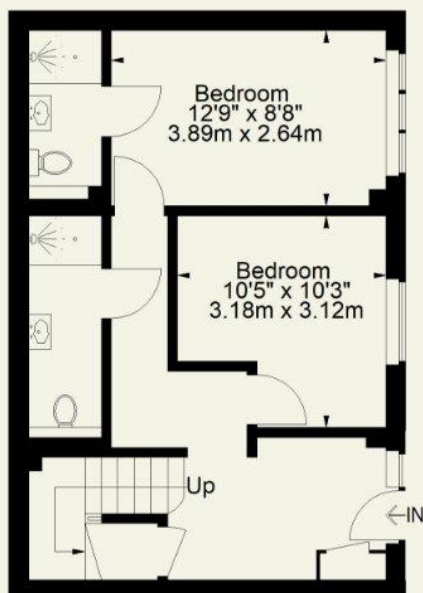
Approximate Gross Internal Area
1449 FT² - 134.6 M²



 = Reduced headroom
below 1.5 m / 5'0"



Second Floor



Ground Floor



First Floor

Notting Hill
8 Ladbroke Grove, Notting Hill,
London W11 3BG

Hyde Park
37-41 Sussex Place, Hyde Park,
London W2 2TH

South Kensington
4-5 Kynance Place, South Kensington,
London SW7 4QS

WWW.LUROTBRAND.CO.UK



Members of NAEA, ARLA, onthemarket.com, Lurot Brand (2) Limited T/A Lurot Brand. Registered in England No. 02035540. Registered Office: 37-41 Sussex Place, London, W2 2TH. VAT No. 629 099 505. www.lurotbrand.co.uk

We have produced these sales particulars as a general guide. We have not carried out a detailed survey of the property and have not tested the services, appliances, or specific fittings. Room sizes are for general guidance purposes and should not be relied upon for fitting carpets or furnishings. Pictures may have been digitally enhanced. Floor plans are not to scale. Fittings shown on floor plans may not match the actual layout or size of fittings at the property. None of the statements as to the property contained in these particulars are to be relied upon as statements or representations of fact. All statements in these particulars as to this property are made without responsibility on the part of Lurot Brand. The Seller does not make or give and neither Lurot Brand or any person in their employment has any authority to make or give any representation or warranty whatever in relation to this property.