



# Queen's Gate Place Mews, SW7

**LUROT BRAND**

MEWS SPECIALISTS EST. 1971

020 7590 9955  
[sales@lurotbrand.co.uk](mailto:sales@lurotbrand.co.uk)



Kitchen

Kitchen



# Queen's Gate Place Mews, SW7

Freehold

£3,000,000 STC

---

## A large and three bed family home sat in a popular mews in South Kensington

Situated in the popular Queen's Gate Place Mews this property is tucked in secluded corner of the mews. It has spacious accommodation organised over three floors. The property is entered via the mews to the large ground floor hall which in turn leads to the spacious open plan kitchen. Also on the ground floor is a utility and a garage. The first floor is made up of a big reception room, double bedroom with ensuite. On the second floor there are two bedroom suites.

### LOCATION

Queen's Gate Place mews is entered via a wonderful listed archway and is one of South Kensington's most sought after mews. Located west of Queens Gate, north of Cromwell Road, and can be accessed from Queens Gate Place. Gloucester Road and South Kensington (Circle, District & Piccadilly Lines) are a short walk away as are the wonders of Hyde Park and Kensington Gardens.





Reception Room

Master Bedroom





Guest Bedroom

View From Balcony



FEATURES

Large Kitchen Dining room	Three Ensuite Bathrooms
First Floor Reception Room	Garage
Balcony	Cobbled Mews
Three Double Bedroom	

OTHER USEFUL INFORMATION

EPC	E
Council Tax Band	G

NEAREST TUBE STATIONS

Gloucester Road and South Kensington ( Circle, District & Piccadilly Lines)
---

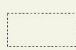


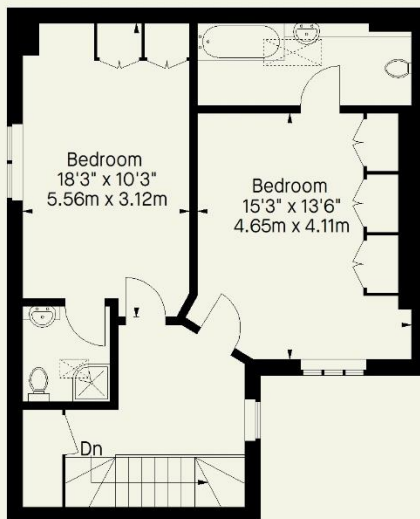
## Queens Gate Place Mews, SW7

Approximate Gross Internal Area  
(Including Garage)

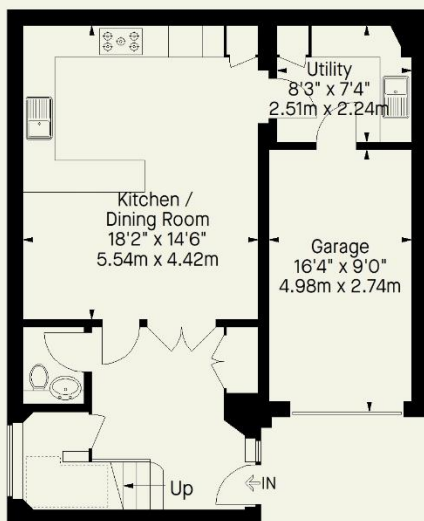
1953 FT<sup>2</sup> - 181.4 M<sup>2</sup>



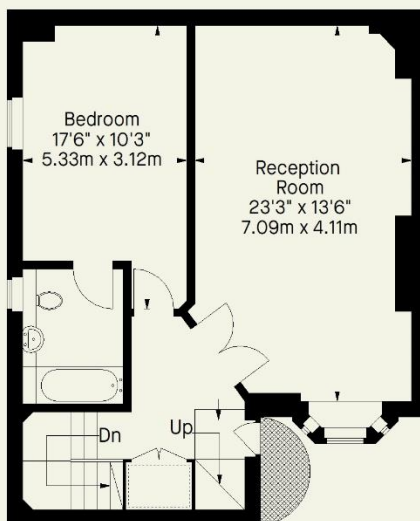
 = Reduced headroom  
below 1.5 m / 5'0



**Second Floor**



**Ground Floor**



**First Floor**

Whilst every attempt has been made to ensure the accuracy of the floorplan contained here, measurements of doors, windows, rooms and any other item are approximate and no responsibility is taken for any error, omission, or misstatement. This plan is for guidance only and must not be relied upon as a statement of fact. Attention is drawn to the important notice on the last page of the text in the particulars.





Hyde Park  
37-41 Sussex Place, Hyde Park,  
London W2 2TH

South Kensington  
4-5 Kynance Place, South Kensington,  
London SW7 4QS

**WWW.LUROTBRAND.CO.UK**



Members of NAEA, ARLA, onthemarket.com. Lurot Brand (2) Limited T/A Lurot Brand. Registered in England No. 02035540. Registered Office: 37-41 Sussex Place, London, W2 2TH. VAT No. 629 099 505. [www.lurotbrand.co.uk](http://www.lurotbrand.co.uk)

We have produced these sales particulars as a general guide. We have not carried out a detailed survey of the property and have not tested the services, appliances, or specific fittings. Room sizes are for general guidance purposes and should not be relied upon for fitting carpets or furnishings. Pictures may have been digitally enhanced. Floor plans are not to scale. Fittings shown on floor plans may not match the actual layout or size of fittings at the property. None of the statements as to the property contained in these particulars are to be relied upon as statements or representations of fact. Any reference to alterations to, or use of, any part of the property does not mean that any necessary planning, building regulations or other consent has been obtained. A buyer or lessee must find out by inspection or in other ways that these matters have been properly dealt with and that all information is correct.

All statements in these particulars as to this property are made without responsibility on the part of Lurot Brand. The Seller does not make or give and neither Lurot Brand or any person in their employment has any authority to make or give any representation or warranty whatever in relation to this property.