



# Princes Mews, W2

**LUROT BRAND**

MEWS SPECIALISTS EST. 1971

020 7590 9955

[lettings@lurotbrand.co.uk](mailto:lettings@lurotbrand.co.uk)



Lower Ground Floor

Ground Floor



# Princes Mews, W2

Part Furnished

£1,550 PW

---

## A beautifully refurbished Mews house in Notting Hill.

This three bedroom Mews house has been recently renovated into a welcoming and modern living space. The ground floor offers a bright reception room whilst the lower ground boasts a large, fully integrated kitchen/dining area.

The first floor has three separate bedrooms, one with an en-suite and a final shared family bathroom.

### LOCATION

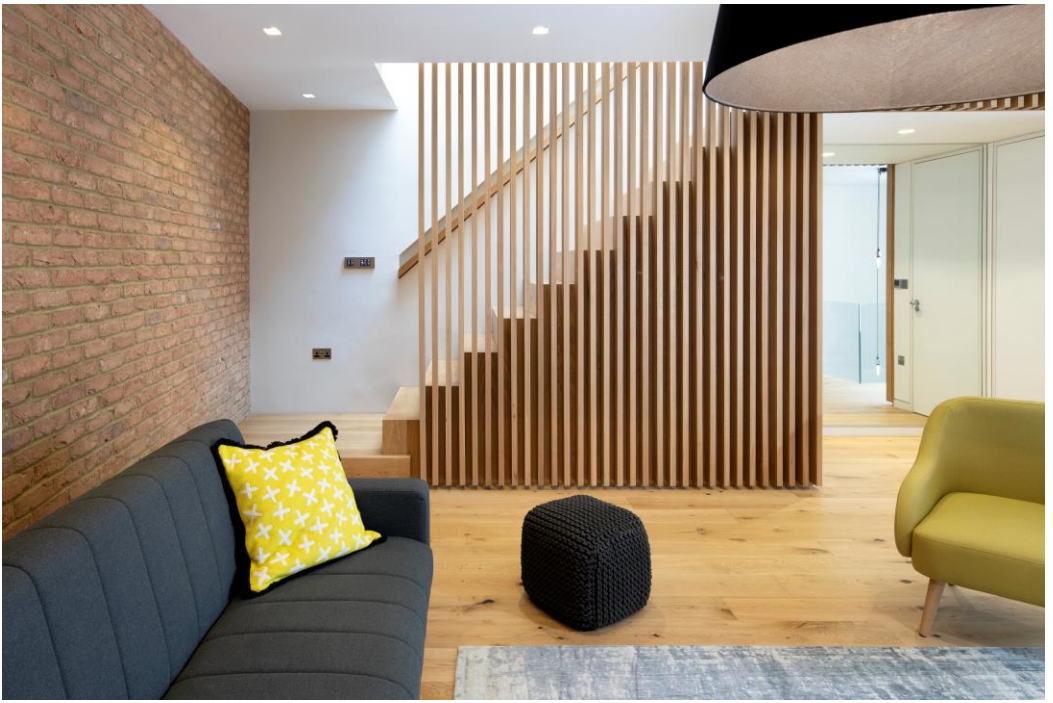
Princes Mews is a cul-de-sac Mews street, located just a short walk to Notting Hill, surrounded by lots of restaurants, pubs and local amenities.



Ground Floor

Ground Floor





Ground Floor

Lower Ground Floor



## FEATURES

Three Bedrooms

---

Two Bathrooms

---

Modern

---

Cobbled Mews

---

## OTHER USEFUL INFORMATION

EPC C

---

Council Tax Band G

---

Deposit Amount £9,300.00

---

## NEAREST TUBE STATIONS

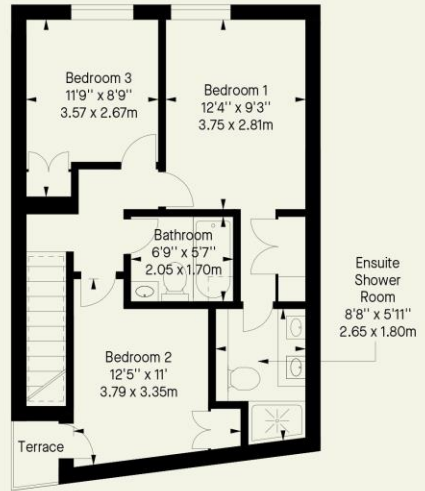
Notting Hill Gate (District, Circle and Central Line), Lancaster

---

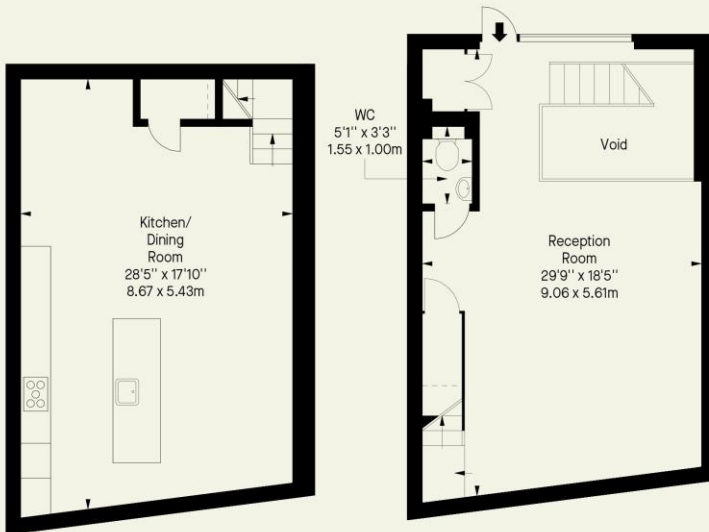
Gate (Central Line), Queensway (Central Line)

---

Princes Mews, W2  
Approx. Gross Internal Area \*  
1473 Ft<sup>2</sup> - 136.84 M<sup>2</sup>



First Floor



Lower Ground Floor

Ground Floor

Whilst every attempt has been made to ensure the accuracy of the floor plan contained here, measurements of doors, windows, rooms and any other item are approximate and no responsibility is taken for any error, omission, or misstatement. Please check all dimensions before making a decision reliant upon them.

Notting Hill  
8 Ladbroke Grove, Notting Hill,  
London W11 3BG

Hyde Park  
37-41 Sussex Place, Hyde Park,  
London W2 2TH

South Kensington  
4-5 Kynance Place, South Kensington,  
London SW7 4QS

**WWW.LUROTBRAND.CO.UK**



Members of NAEA, ARLA, onthemarket.com. Lurot Brand (2) Limited T/A Lurot Brand. Registered in England No. 02035540. Registered Office: 37-41 Sussex Place, London, W2 2TH. VAT No. 629 099 505. [www.lurotbrand.co.uk](http://www.lurotbrand.co.uk)

---

We have produced these sales particulars as a general guide. We have not carried out a detailed survey of the property and have not tested the services, appliances, or specific fittings. Room sizes are for general guidance purposes and should not be relied upon for fitting carpets or furnishings. Pictures may have been digitally enhanced. Floor plans are not to scale. Fittings shown on floor plans may not match the actual layout or size of fittings at the property. None of the statements as to the property contained in these particulars are to be relied upon as statements or representations of fact. All statements in these particulars as to this property are made without responsibility on the part of Lurot Brand. The Seller does not make or give and neither Lurot Brand or any person in their employment has any authority to make or give any representation or warranty whatever in relation to this property.