



Greens Court, W11

LUROT BRAND

MEWS SPECIALISTS EST. 1971

020 7590 9955
sales@lurotbrand.co.uk



First Floor

Second Floor



Greens Court, W11

Leasehold Approx. 114 years and 7 months
(Exp. Dec 2138)

£1,850,000 STC

A fabulous five bedroom house in a private development with a large terrace and off-street parking.

Offering the privacy of a house while also the benefit of a secure communal building, Greens Court is unique in what the house offers. The large private terrace off the kitchen/reception room is of particular note. All the bedrooms are good sizes (one en-suite) while the others are served by a good-sized family bathroom.

LOCATION

Located on Lansdowne Mews, this prime location has all the benefits of Mews living whilst being located right by Holland Park Avenue and all the amenities and transport links it has to offer.



Third Floor

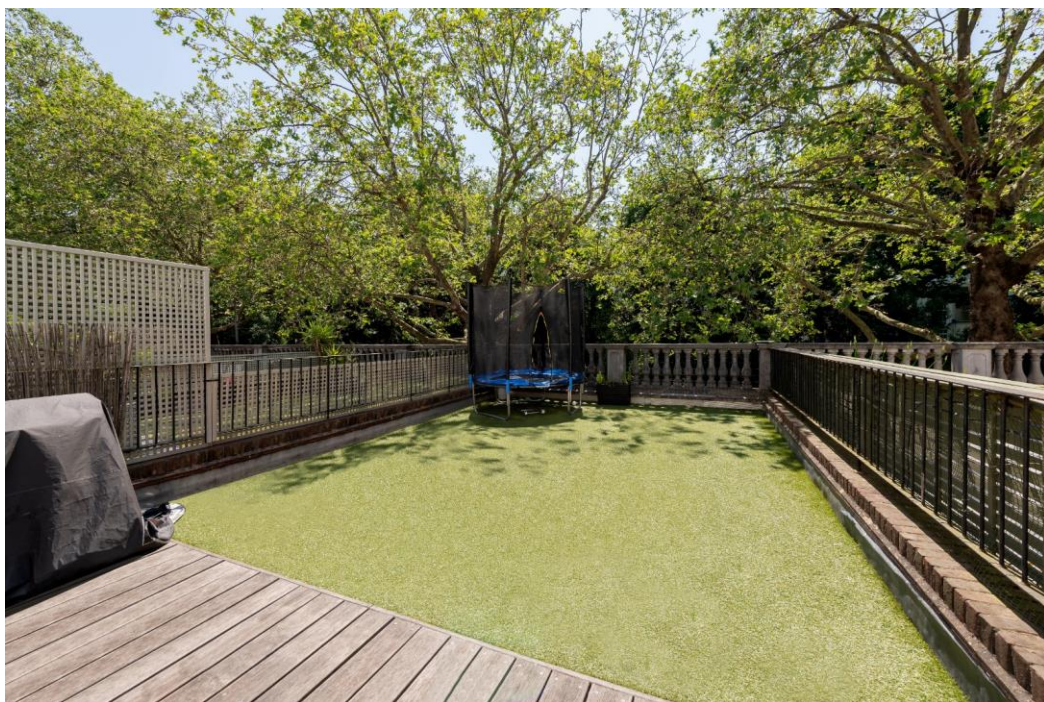
First Floor





Second Floor

First Floor



FEATURES

Kitchen	Two Bathrooms
Reception Room	Garden
Five Bedrooms	W/C

OTHER USEFUL INFORMATION

EPC	E
Council Tax Band	G

NEAREST TUBE STATIONS

Holland Park (Central line)

Greens Court, W11

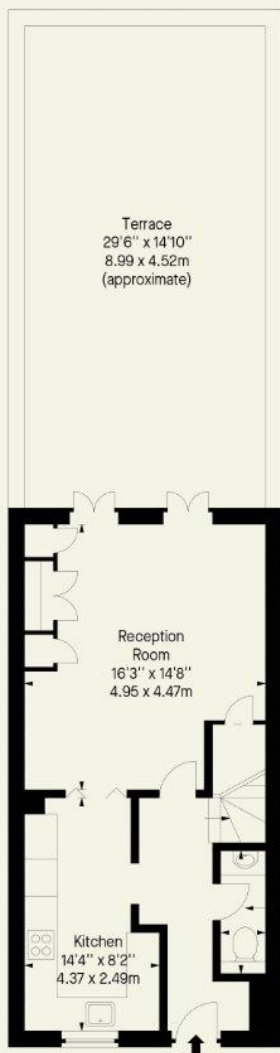
Approx. Gross Internal Area *

1338 Ft² - 124.30 M²

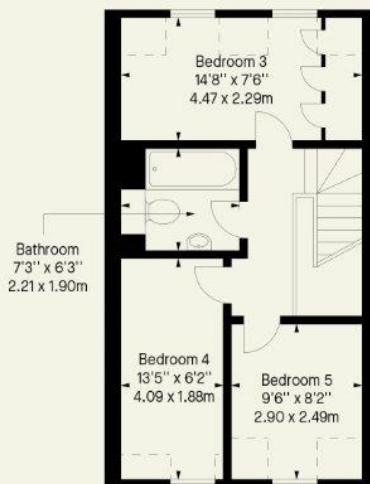
Approx. Gross Internal Area *

1773 Ft² - 164.71 M²

(Including Terrace)



First Floor



Third Floor



Second Floor

Whilst every attempt has been made to ensure the accuracy of the floor plan contained here, measurements of doors, windows, rooms and any other item are approximate and no responsibility is taken for any error, omission, or misstatement. Please check all dimensions before making a decision reliant upon them.

This plan is for guidance only and must not be relied upon as a statement of fact. Attention is drawn to the important notice on the last page of the text of the particulars.

Hyde Park
37-41 Sussex Place, Hyde Park,
London W2 2TH

South Kensington
4-5 Kynance Place, South Kensington,
London SW7 4QS

WWW.LUROTBRAND.CO.UK



Members of NAEA, ARLA, onthemarket.com. Lurot Brand (2) Limited T/A Lurot Brand. Registered in England No. 02035540. Registered Office: 37-41 Sussex Place, London, W2 2TH. VAT No. 629 099 505. www.lurotbrand.co.uk

We have produced these sales particulars as a general guide. We have not carried out a detailed survey of the property and have not tested the services, appliances, or specific fittings. Room sizes are for general guidance purposes and should not be relied upon for fitting carpets or furnishings. Pictures may have been digitally enhanced. Floor plans are not to scale. Fittings shown on floor plans may not match the actual layout or size of fittings at the property. None of the statements as to the property contained in these particulars are to be relied upon as statements or representations of fact. Any reference to alterations to, or use of, any part of the property does not mean that any necessary planning, building regulations or other consent has been obtained. A buyer or lessee must find out by inspection or in other ways that these matters have been properly dealt with and that all information is correct.

All statements in these particulars as to this property are made without responsibility on the part of Lurot Brand. The Seller does not make or give and neither Lurot Brand or any person in their employment has any authority to make or give any representation or warranty whatever in relation to this property.