



West Mews, SW1V

LUROT BRAND

MEWS SPECIALISTS EST. 1971

020 7590 9955
sales@lurotbrand.co.uk



Ground Floor

Ground Floor



West Mews, SW1V

Share of Freehold Approx. 959 years and 8 months
(Exp. Sep 2983)

£1,100,000 STC

A beautifully refurbished two-bedroom house in the heart of Pimlico.

West Mews offers spacious, comfortable living, comprising of a large reception on the ground floor with separate kitchen and utility room. Benefiting enormously from dual aspect, the rooms are bright and airy, an unusual quality for a mews. The stairs take you up to a generous landing with two bedrooms and two bathrooms leading off it. This lovely mews home has been completely refurbished throughout, leaving potential to add value as planning permission has been granted for a basement adding almost an extra 50% of floor space.
REF: PP-09739658

LOCATION

West Mews is tucked away just off the very quiet Little Clarendon Street, nestled between Pimlico's two most prestigious garden squares. Surrounded by a plethora of boutique shops, bars and cafes, with Victoria station and Pimlico underground only a ten minute walk away, an excellent location for a central London home.



First Floor

First Floor





First Floor

External



FEATURES

Kitchen	En Suite Bathroom
Reception/Dining Room	Bathroom
Two Bedrooms	

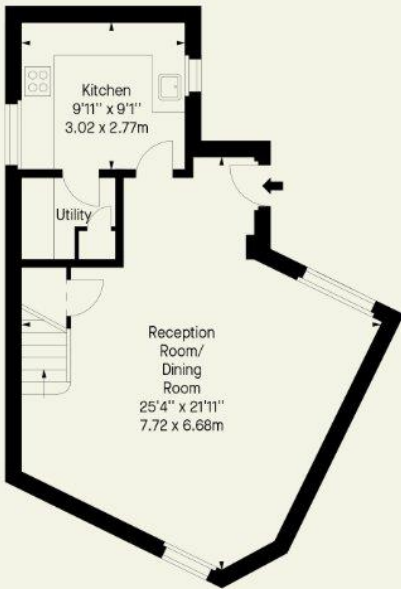
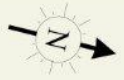
OTHER USEFUL INFORMATION

EPC	D
Council Tax Band	G
Annual Ground Rent	Peppercorn
Annual Service Charge	£780

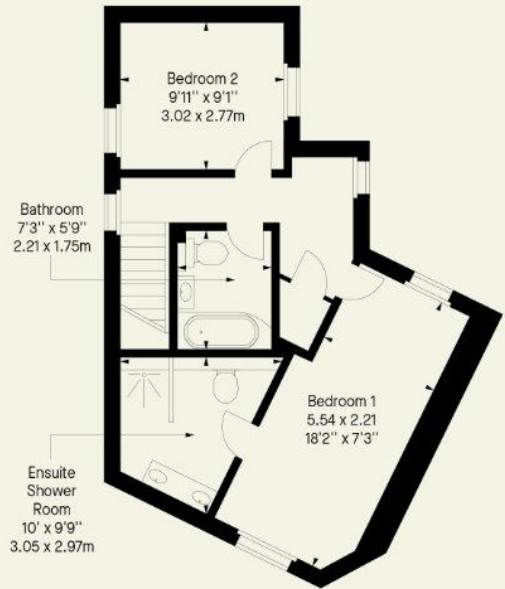
NEAREST TUBE STATIONS

Victoria (District, Circle, Victoria, Mainline and National Coach Services)

West Mews, SW1V
Approx. Gross Internal Area *
956 Ft² - 88.81 M²



Ground Floor



First Floor

Whilst every attempt has been made to ensure the accuracy of the floor plan contained here, measurements of doors, windows, rooms and any other item are approximate and no responsibility is taken for any error, omission, or misstatement. Please check all dimensions before making a decision reliant upon them.

This plan is for guidance only and must not be relied upon as a statement of fact. Attention is drawn to the important notice on the last page of the text of the particulars.

Notting Hill
8 Ladbroke Grove, Notting Hill,
London W11 3BG

Hyde Park
37-41 Sussex Place, Hyde Park,
London W2 2TH

South Kensington
4-5 Kynance Place, South Kensington,
London SW7 4QS

WWW.LUROTBRAND.CO.UK



Members of NAEA, ARLA, onthemarket.com. Lurot Brand (2) Limited T/A Lurot Brand. Registered in England No. 02035540. Registered Office: 37-41 Sussex Place, London, W2 2TH. VAT No. 629 099 505. www.lurotbrand.co.uk

We have produced these sales particulars as a general guide. We have not carried out a detailed survey of the property and have not tested the services, appliances, or specific fittings. Room sizes are for general guidance purposes and should not be relied upon for fitting carpets or furnishings. Pictures may have been digitally enhanced. Floor plans are not to scale. Fittings shown on floor plans may not match the actual layout or size of fittings at the property. None of the statements as to the property contained in these particulars are to be relied upon as statements or representations of fact. Any reference to alterations to, or use of, any part of the property does not mean that any necessary planning, building regulations or other consent has been obtained. A buyer or lessee must find out by inspection or in other ways that these matters have been properly dealt with and that all information is correct.

All statements in these particulars as to this property are made without responsibility on the part of Lurot Brand. The Seller does not make or give and neither Lurot Brand or any person in their employment has any authority to make or give any representation or warranty whatever in relation to this property.