



Linden Mews, W2

LUROT BRAND

MEWS SPECIALISTS EST. 1971

020 7590 9955
sales@lurotbrand.co.uk



Ground Floor

Ground Floor



Linden Mews, W2

Freehold

£2,500,000 STC

An attractive two bed mews house with opportunity to extend and add another floor.

One of London's best kept secret mews. Hidden off a tranquil corner of a beautiful Notting Hill square through private gates lies this perfect pied-a-terre, with private parking. This house has recently been refurbished to a high standard. On the ground floor is a large open plan sitting room with a raised kitchen/dining area. Also on the ground floor is the utility and garage. On the first floor are two large bedroom suites.

There is precedent from other developments on the road for adding a floor.

LOCATION

Moments from the conveniences of Notting Hill Gate, this mews is tucked away quietly off a corner of Linden Gardens. Situated at the west end of Kensington Gardens makes this location particularly desirable.



First Floor

Ground Floor





First Floor

Street



FEATURES

Reception Room	Utility Room
Kitchen/Dining Room	Garage
Two Bedrooms	Gated Mews
Two En Suite Bathrooms	

OTHER USEFUL INFORMATION

EPC	D
Council Tax Band	G

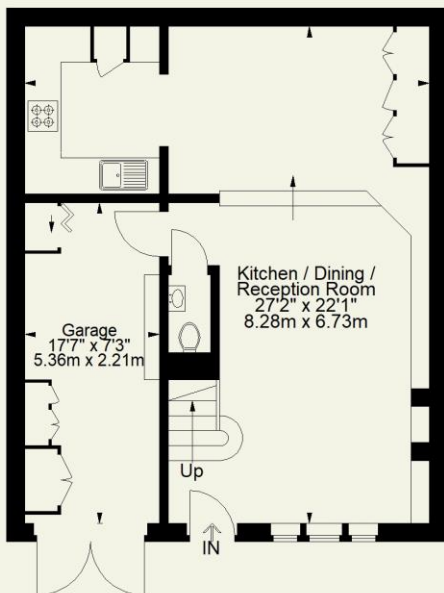
NEAREST TUBE STATIONS

Notting Hill Gate (District, Circle and Central lines)

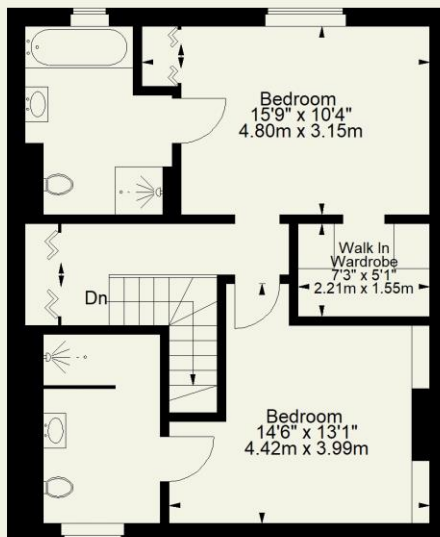
Linden Mews W2

Approximate Gross Internal Area
(Including Garage)

1212 FT² - 112.6 M²



Ground Floor



First Floor

Hyde Park
37-41 Sussex Place, Hyde Park,
London W2 2TH

South Kensington
4-5 Kynance Place, South Kensington,
London SW7 4QS

WWW.LUROTBRAND.CO.UK



Members of NAEA, ARLA, onthemarket.com. Lurot Brand (2) Limited T/A Lurot Brand. Registered in England No. 02035540. Registered Office: 37-41 Sussex Place, London, W2 2TH. VAT No. 629 099 505. www.lurotbrand.co.uk

We have produced these sales particulars as a general guide. We have not carried out a detailed survey of the property and have not tested the services, appliances, or specific fittings. Room sizes are for general guidance purposes and should not be relied upon for fitting carpets or furnishings. Pictures may have been digitally enhanced. Floor plans are not to scale. Fittings shown on floor plans may not match the actual layout or size of fittings at the property. None of the statements as to the property contained in these particulars are to be relied upon as statements or representations of fact. Any reference to alterations to, or use of, any part of the property does not mean that any necessary planning, building regulations or other consent has been obtained. A buyer or lessee must find out by inspection or in other ways that these matters have been properly dealt with and that all information is correct.

All statements in these particulars as to this property are made without responsibility on the part of Lurot Brand. The Seller does not make or give and neither Lurot Brand or any person in their employment has any authority to make or give any representation or warranty whatever in relation to this property.