



Linden Mews, W2

LUROT BRAND

MEWS SPECIALISTS EST. 1971

020 7590 9955

lettings@lurotbrand.co.uk



Ground Floor

Ground Floor



Linden Mews, W2

Unfurnished

£1,373.07 PW

A stunning two bedroom Mews house in a gated mews in Notting Hill.

The property is located a short walk from Notting Hill gate, off of a quiet tree lined road. The house has been newly refurbished to a beautiful standard, with wooden floors throughout.

The ground floor offers a lovely large bright reception room, leading to an elevated dining area and kitchen with marble counter tops. There is also a separate office/snug area and a W/C. The first floor has two equally large bedrooms, both with newly refurbished beautiful en-suite bathrooms. The master bedroom has a walk in wardrobe and the house has ample storage throughout.

LOCATION

Located a short walk from Notting Hill Gate and Hyde Park



Ground Floor

Ground Floor





First Floor

Ground Floor



FEATURES

2 Bedrooms

Newly Refurbished

2 Bathrooms

Amazing Location

Gated Mews

Wooden Floors throughout

OTHER USEFUL INFORMATION

EPC

D

Council Tax Band

G

Deposit Amount

£8,238.42

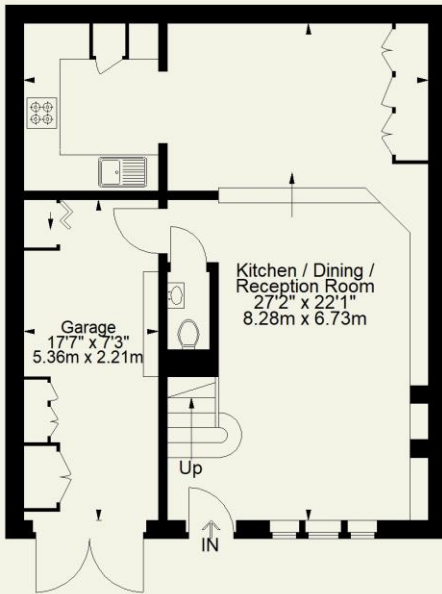
NEAREST TUBE STATIONS

Notting Hill Gate (District, Circle and Central Line)

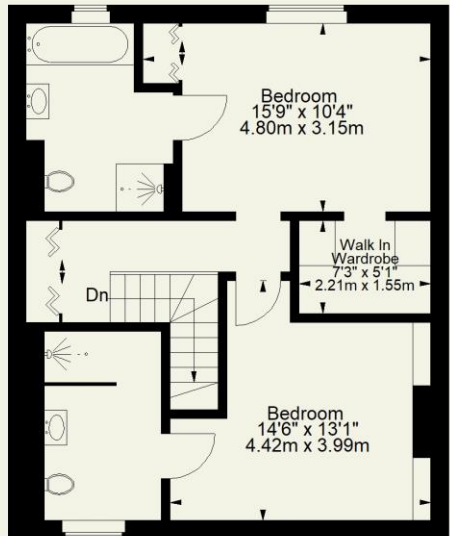
Linden Mews W2

Approximate Gross Internal Area
(Including Garage)

1212 FT² - 112.6 M²



Ground Floor



First Floor

Notting Hill
8 Ladbroke Grove, Notting Hill,
London W11 3BG

Hyde Park
37-41 Sussex Place, Hyde Park,
London W2 2TH

South Kensington
4-5 Kynance Place, South Kensington,
London SW7 4QS

WWW.LUROTBRAND.CO.UK



Members of NAEA, ARLA, onthemarket.com. Lurot Brand (2) Limited T/A Lurot Brand. Registered in England No. 02035540. Registered Office: 37-41 Sussex Place, London, W2 2TH. VAT No. 629 099 505. www.lurotbrand.co.uk

We have produced these sales particulars as a general guide. We have not carried out a detailed survey of the property and have not tested the services, appliances, or specific fittings. Room sizes are for general guidance purposes and should not be relied upon for fitting carpets or furnishings. Pictures may have been digitally enhanced. Floor plans are not to scale. Fittings shown on floor plans may not match the actual layout or size of fittings at the property. None of the statements as to the property contained in these particulars are to be relied upon as statements or representations of fact. All statements in these particulars as to this property are made without responsibility on the part of Lurot Brand. The Seller does not make or give and neither Lurot Brand or any person in their employment has any authority to make or give any representation or warranty whatever in relation to this property.