



# Wimpole Mews, W1G

**LUROT BRAND**

MEWS SPECIALISTS EST. 1971

020 7590 9955  
sales@lurotbrand.co.uk



Second Floor

Second Floor



# Wimpole Mews, W1G

Leasehold Approx. 900 years and 11 months  
(Exp. Jan 2925)

£4,750,000 STC

---

A very fine three-bedroom house  
on the ever-charming Wimpole  
Mews.

This has recently been redeveloped to an exceptionally high standard creating large airy rooms flooded with natural light from the double aspect, incorporating air conditioning and an integrated speaker system throughout. With both a garage and terrace, unusual for a mews, this boasts everything one might want from a very prime mews home.

## LOCATION

Wimpole Mews is at the heart of Marylebone, made famous by its intriguing history. Marylebone High Street is a stone's throw away from many charming cafes and restaurants with the added enjoyment of many boutique shops.



Second Floor

Second Floor





Lower Ground Floor

First Floor



## FEATURES

Reception Room

---

Dressing Room

---

Kitchen

---

Study

---

Three Bedrooms

---

TV Room

---

Three En-Suite Bathrooms

---

Garage

---

## OTHER USEFUL INFORMATION

EPC

---

E

Council Tax Band

---

G

Annual Ground Rent

---

£125

---

## NEAREST TUBE STATIONS

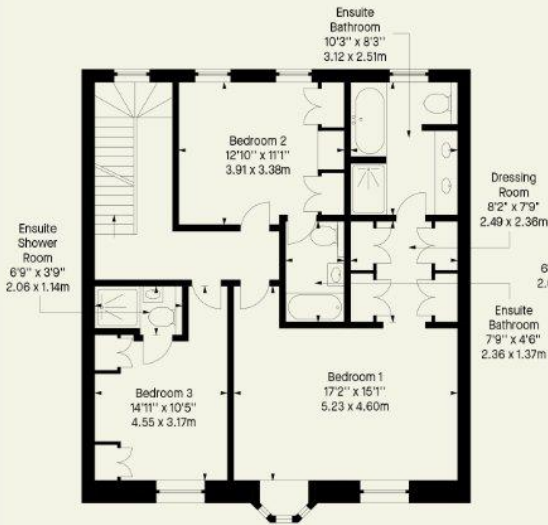
Oxford Circus (Central, Bakerloo & Victoria lines), Regent's

---

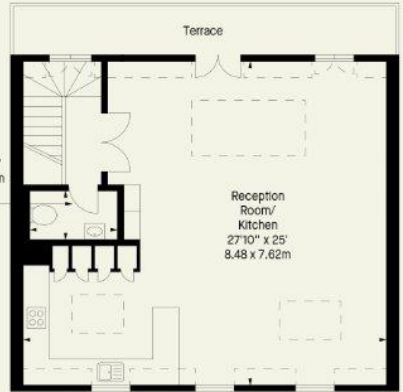
Park (Bakerloo line)

---

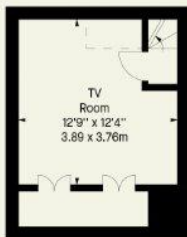
Wimpole Mews, W1G  
 Approx. Gross Internal Area \*  
 2175 Ft<sup>2</sup> - 202.06 M<sup>2</sup>  
 (Including Garage)



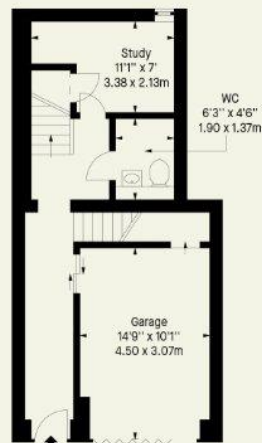
First Floor



Second Floor



Lower Ground Floor



Ground Floor

Whilst every attempt has been made to ensure the accuracy of the floor plan contained here, measurements of doors, windows, rooms and any other item are approximate and no responsibility is taken for any error, omission, or misstatement. Please check all dimensions before making a decision reliant upon them.

This plan is for guidance only and must not be relied upon as a statement of fact. Attention is drawn to the important notice on the last page of the text of the particulars.

Notting Hill  
8 Ladbroke Grove, Notting Hill,  
London W11 3BG

Hyde Park  
37-41 Sussex Place, Hyde Park,  
London W2 2TH

South Kensington  
4-5 Kynance Place, South Kensington,  
London SW7 4QS

**WWW.LUROTBRAND.CO.UK**



Members of NAEA, ARLA, onthemarket.com. Lurot Brand (2) Limited T/A Lurot Brand. Registered in England No. 02035540. Registered Office: 37-41 Sussex Place, London, W2 2TH. VAT No. 629 099 505. [www.lurotbrand.co.uk](http://www.lurotbrand.co.uk)

We have produced these sales particulars as a general guide. We have not carried out a detailed survey of the property and have not tested the services, appliances, or specific fittings. Room sizes are for general guidance purposes and should not be relied upon for fitting carpets or furnishings. Pictures may have been digitally enhanced. Floor plans are not to scale. Fittings shown on floor plans may not match the actual layout or size of fittings at the property. None of the statements as to the property contained in these particulars are to be relied upon as statements or representations of fact. Any reference to alterations to, or use of, any part of the property does not mean that any necessary planning, building regulations or other consent has been obtained. A buyer or lessee must find out by inspection or in other ways that these matters have been properly dealt with and that all information is correct.

All statements in these particulars as to this property are made without responsibility on the part of Lurot Brand. The Seller does not make or give and neither Lurot Brand or any person in their employment has any authority to make or give any representation or warranty whatever in relation to this property.