

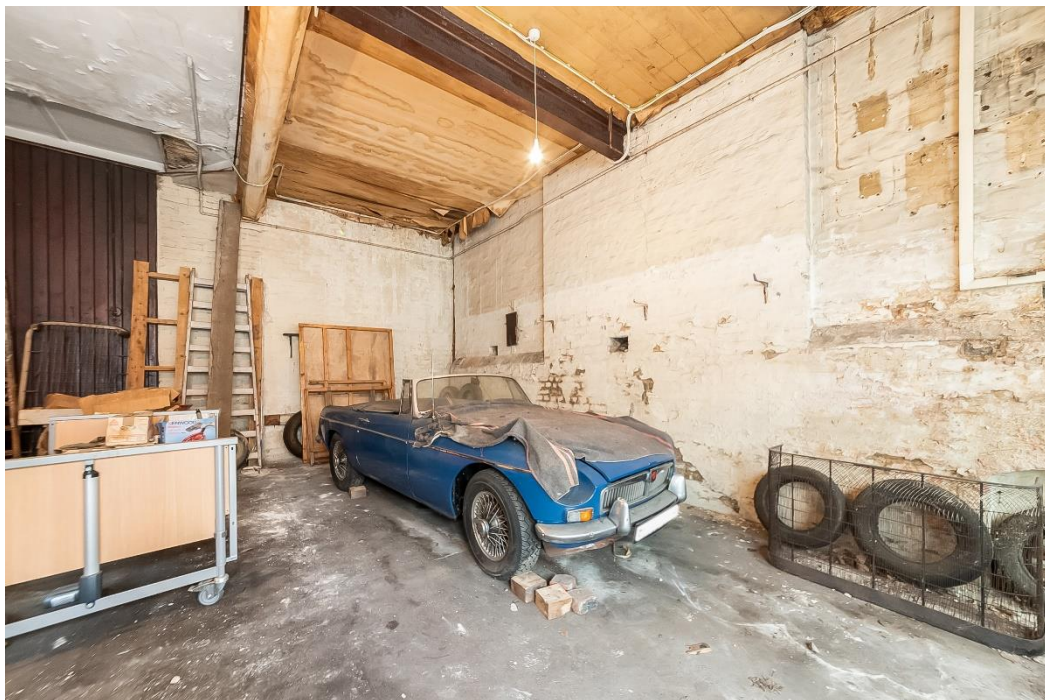


Colbeck Mews, SW7

LUROT BRAND

MEWS SPECIALISTS EST. 1971

020 7590 9955
sales@lurotbrand.co.uk



Garage

First Floor



Colbeck Mews, SW7

Freehold

£2,250,000 STC

A prime development opportunity in South Kensington SW7, offering a large freehold mews house in a desirable London Mews.

Sit at the entrance to Colbeck Mews with views over Harrington Gardens this large mews house offers multiple options for development. It could be split into two discrete houses or just one large family home. Accommodation is organised over three floors and consists of two large garages with original tongue and groove panelling and tiles from its time as a stable. On the first floor is a large reception room, kitchen and two bedrooms and two bathrooms. On the second floor is a large loft room.

LOCATION

Colbeck Mews is a quiet cobbled mews in close proximity to all the restaurants, bars and boutiques that South Kensington is so desired for.



First Floor

First Flooe





First Floor

First Floor



FEATURES

Prime Development	Two Bedrooms
Opportunity	Views Of Harrington Gardens
Large Double Garage	Large Reception Room

OTHER USEFUL INFORMATION

EPC	To be confirmed
Council Tax Band	G

NEAREST TUBE STATIONS

Gloucester Road (Circle, District and Picadilly lines)

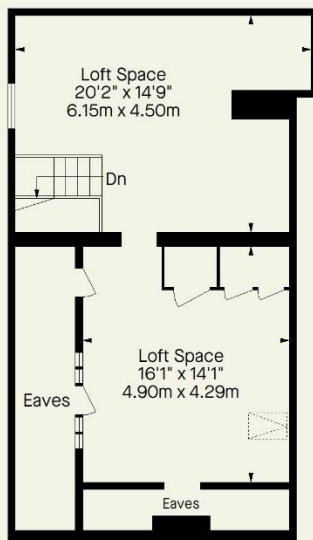
Colbeck Mews, SW7

Approximate Gross Internal Area
(Excluding Eaves)

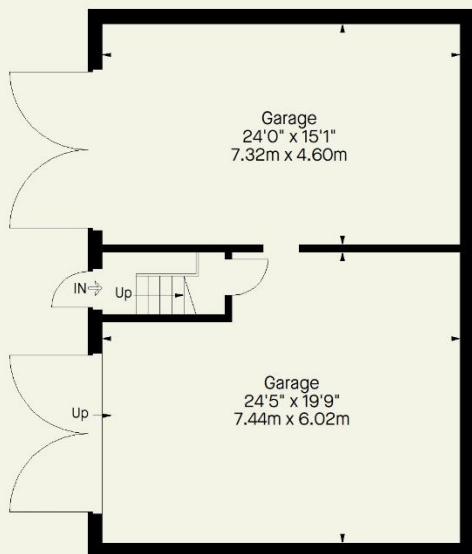
1391 FT² - 129.2 M²

Garage = 882 FT² - 82.0 M²

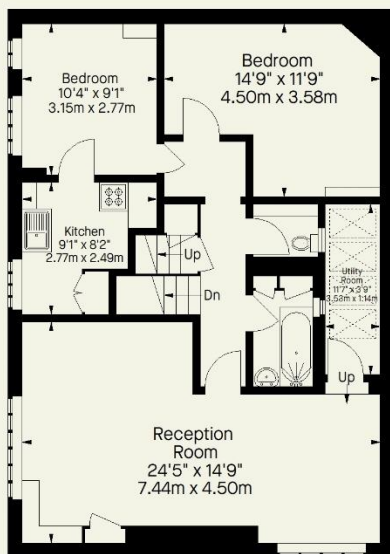
Total = 2273 FT² - 211.2 M²



Second Floor



Ground Floor



First Floor

Whilst every attempt has been made to ensure the accuracy of the floorplan contained here, measurements of doors, windows, rooms and any other item are approximate and no responsibility is taken for any error, omission, or misstatement. This plan is for guidance only and must not be relied upon as a statement of fact. Attention is drawn to the important notice on the last page of the text in the particulars.

Hyde Park
37-41 Sussex Place, Hyde Park,
London W2 2TH

South Kensington
4-5 Kynance Place, South Kensington,
London SW7 4QS

WWW.LUROTBRAND.CO.UK



Members of NAEA, ARLA, onthemarket.com. Lurot Brand (2) Limited T/A Lurot Brand. Registered in England No. 02035540. Registered Office: 37-41 Sussex Place, London, W2 2TH. VAT No. 629 099 505. www.lurotbrand.co.uk

We have produced these sales particulars as a general guide. We have not carried out a detailed survey of the property and have not tested the services, appliances, or specific fittings. Room sizes are for general guidance purposes and should not be relied upon for fitting carpets or furnishings. Pictures may have been digitally enhanced. Floor plans are not to scale. Fittings shown on floor plans may not match the actual layout or size of fittings at the property. None of the statements as to the property contained in these particulars are to be relied upon as statements or representations of fact. Any reference to alterations to, or use of, any part of the property does not mean that any necessary planning, building regulations or other consent has been obtained. A buyer or lessee must find out by inspection or in other ways that these matters have been properly dealt with and that all information is correct.

All statements in these particulars as to this property are made without responsibility on the part of Lurot Brand. The Seller does not make or give and neither Lurot Brand or any person in their employment has any authority to make or give any representation or warranty whatever in relation to this property.