



# Petersham Place, SW7

**LUROT BRAND**

MEWS SPECIALISTS EST. 1971

020 7590 9955

[lettings@lurotbrand.co.uk](mailto:lettings@lurotbrand.co.uk)



First Floor

First Floor



# Petersham Place, SW7

Unfurnished

£1,500 PW

---

A wonderfully bright three/four-bedroom mews house located in the ever-popular Petersham Place.

The ground floor offers a good-sized bedroom with ensuite, and either an additional bedroom or space for a snug or gym, where a garage used to be.

The first floor benefits from an unusually bright reception room with a fully fitted kitchen.

The top floor has a large bedroom with fitted wardrobes, a second spacious double bedroom, and a family bathroom.

## LOCATION

Petersham Place is a cobbled mews ideally situated for all the shops, restaurants and transport facilities of South Kensington & High Street Kensington.



Second Floor

Second Floor





Exterior

First Floor



## FEATURES

Four Bedrooms, One with

Separate Kitchen

Ensuite Bathroom

Family Bathroom

Large Reception/Dining Room

Hall

Balcony

## OTHER USEFUL INFORMATION

EPC

D

Council Tax Band

G

Deposit Amount

£9,000.00

## NEAREST TUBE STATIONS

South Kensington, Gloucester Road (Piccadilly, Circle and District lines)

# Petersham Place, SW7

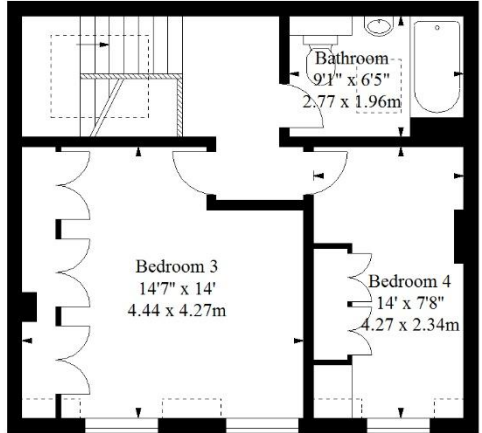
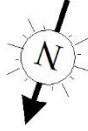
Approx. Gross Internal Area \*

1576 Ft<sup>2</sup> - 146.41 M<sup>2</sup>

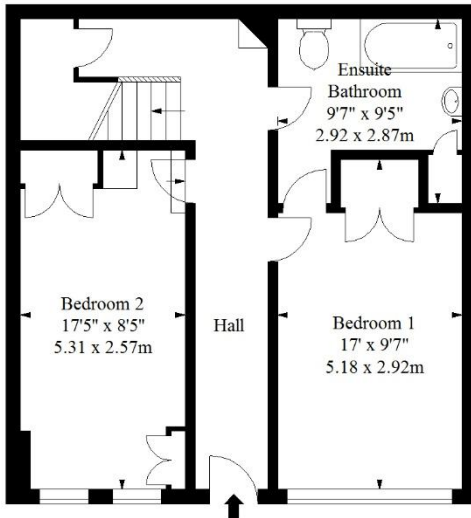
Approx. Gross Internal Area \*

1584 Ft<sup>2</sup> - 147.15 M<sup>2</sup>

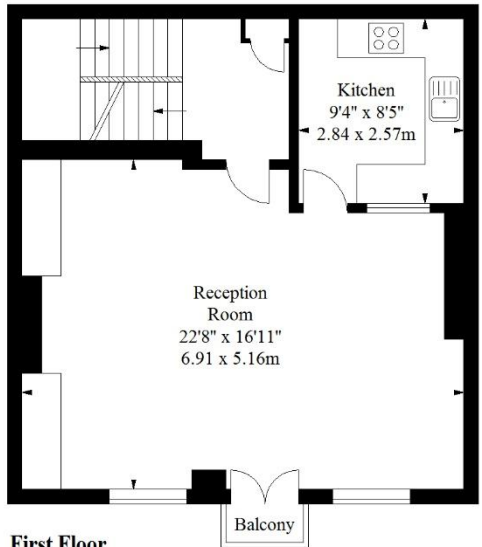
(Including Balcony)



Second Floor



Ground Floor



First Floor



Illustration For Identification Purposes Only. Not To Scale

\* As Defined by RICS - Code of Measuring Practice

© International Floorplans.

Tel 0094 115 345958

[www.ifplk.com](http://www.ifplk.com)

Hyde Park  
37-41 Sussex Place, Hyde Park,  
London W2 2TH

South Kensington  
4-5 Kynance Place, South Kensington,  
London SW7 4QS

[WWW.LUROTBRAND.CO.UK](http://WWW.LUROTBRAND.CO.UK)



Members of NAEA, ARLA, onthemarket.com. Lurot Brand (2) Limited T/A Lurot Brand. Registered in England No. 02035540. Registered Office: 37-41 Sussex Place, London, W2 2TH. VAT No. 629 099 505. [www.lurotbrand.co.uk](http://www.lurotbrand.co.uk)

We have produced these sales particulars as a general guide. We have not carried out a detailed survey of the property and have not tested the services, appliances, or specific fittings. Room sizes are for general guidance purposes and should not be relied upon for fitting carpets or furnishings. Pictures may have been digitally enhanced. Floor plans are not to scale. Fittings shown on floor plans may not match the actual layout or size of fittings at the property. None of the statements as to the property contained in these particulars are to be relied upon as statements or representations of fact. Any reference to alterations to, or use of, any part of the property does not mean that any necessary planning, building regulations or other consent has been obtained. A buyer or lessee must find out by inspection or in other ways that these matters have been properly dealt with and that all information is correct.

All statements in these particulars as to this property are made without responsibility on the part of Lurot Brand. The Seller does not make or give and neither Lurot Brand or any person in their employment has any authority to make or give any representation or warranty whatever in relation to this property.