



# Russell Gardens Mews, W14

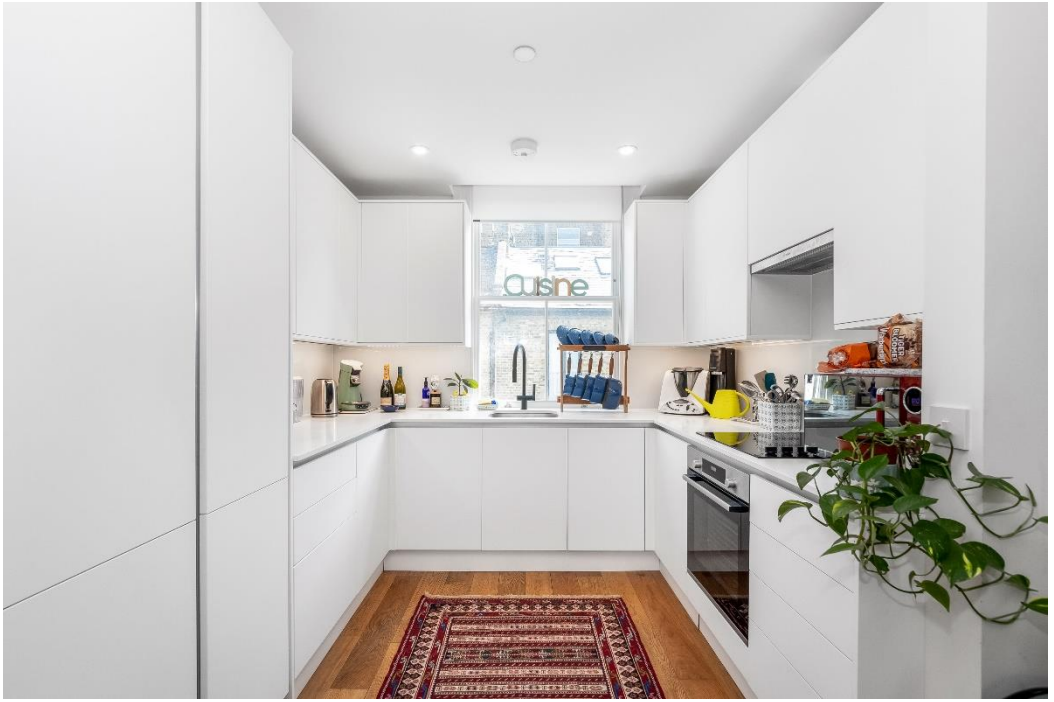
**LUROT BRAND**  
MEWS SPECIALISTS EST. 1971

020 7590 9955  
[sales@lurotbrand.co.uk](mailto:sales@lurotbrand.co.uk)



First Floor

First Floor



# Russell Gardens Mews, W14

Freehold

£2,100,000 STC

---

A charming four-bedroom mews house, with a large west-facing terrace, in W14.

This recently refurbished mews house offers plenty of bright open plan spaces across three floors. The property provides two large reception rooms, a modern style kitchen, four bedrooms, three bathrooms, a large west facing terrace, and garage.

The property has been designed with the option to establish a self-contained ground floor apartment.

## LOCATION

Russell Gardens Mews is ideally positioned between Holland Park and Shepherd's Bush. The green open space of Holland Park is a short distance away as well as the shops, restaurants and amenities of Holland Park Avenue. Kensington Olympia and Shepherd's Bush underground/overground stations provide easy access to the City (District, Central & Overground)



Terrace

First Floor





First Floor

Ground Floor



FEATURES

Five Bedrooms	Freehold
Three Bathrooms	Self-Contained Apartment
One Ensuite	Open Plan Kitchen/Living
Large Terrace	Garage

OTHER USEFUL INFORMATION

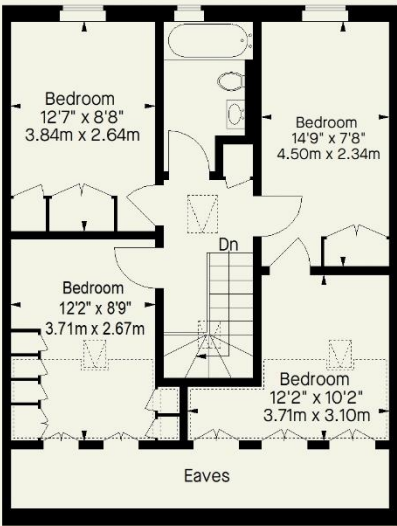
EPC	D
Council Tax Band	E

NEAREST TUBE STATIONS

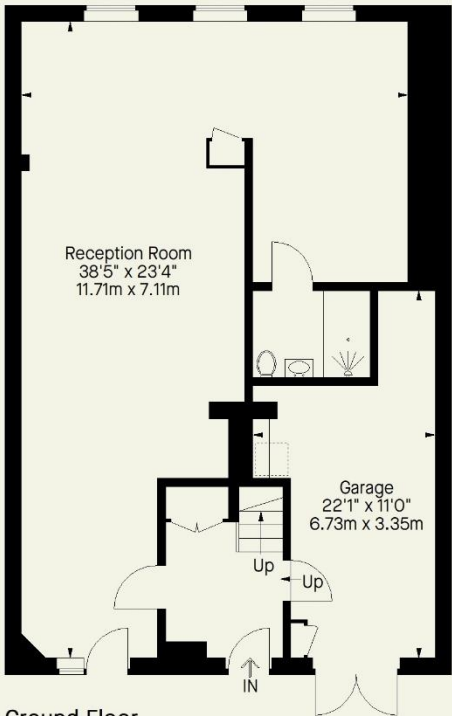
Kensington Olympia & Shepherds Bush (District, Central & Overground)
--

# Russell Gardens Mews, W14

Approximate Gross Internal Area  
(Including Garage / Excluding Eaves)  
2253 FT<sup>2</sup> - 209.3 M<sup>2</sup>

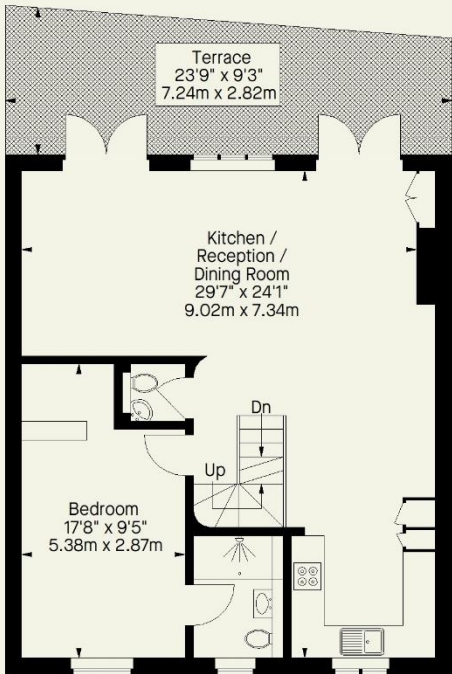


= Reduced headroom below 1.5 m / 5'0"



Ground Floor

Second Floor



First Floor

Whilst every attempt has been made to ensure the accuracy of the floorplan contained here, measurements of doors, windows, rooms and any other item are approximate and no responsibility is taken for any error, omission, or misstatement. This plan is for guidance only and must not be relied upon as a statement of fact. Attention is drawn to the important notice on the last page of the text in the particulars.

Hyde Park  
37-41 Sussex Place, Hyde Park,  
London W2 2TH

South Kensington  
4-5 Kynance Place, South Kensington,  
London SW7 4QS

**WWW.LUROTBRAND.CO.UK**



Members of NAEA, ARLA, onthemarket.com. Lurot Brand (2) Limited T/A Lurot Brand. Registered in England No. 02035540. Registered Office: 37-41 Sussex Place, London, W2 2TH. VAT No. 629 099 505. [www.lurotbrand.co.uk](http://www.lurotbrand.co.uk)

We have produced these sales particulars as a general guide. We have not carried out a detailed survey of the property and have not tested the services, appliances, or specific fittings. Room sizes are for general guidance purposes and should not be relied upon for fitting carpets or furnishings. Pictures may have been digitally enhanced. Floor plans are not to scale. Fittings shown on floor plans may not match the actual layout or size of fittings at the property. None of the statements as to the property contained in these particulars are to be relied upon as statements or representations of fact. Any reference to alterations to, or use of, any part of the property does not mean that any necessary planning, building regulations or other consent has been obtained. A buyer or lessee must find out by inspection or in other ways that these matters have been properly dealt with and that all information is correct.

All statements in these particulars as to this property are made without responsibility on the part of Lurot Brand. The Seller does not make or give and neither Lurot Brand or any person in their employment has any authority to make or give any representation or warranty whatever in relation to this property.