



Archery Close, W2

LUROT BRAND

MEWS SPECIALISTS EST. 1971

020 7590 9955
sales@lurotbrand.co.uk



First Floor

Ground Floor



Archery Close, W2

Freehold

£2,400,000 STC

A wonderful freehold mews house located in a pretty, cobbled mews in the heart of Connaught Village.

This house presents beautifully throughout with an abundance of natural light due to its dual aspect, rare amongst mews houses. The kitchen and reception areas are found over the ground and first floor and enjoy stunning views to the rear over St George's Fields. Both bedrooms are generous in size, have ensuite bathrooms as well as built in storage.

LOCATION

Archery Close is a very pretty, cobbled mews in Connaught Village that has an extensive range of fine boutiques and shops. The green spaces of Hyde Park are a short stroll away.



Ground Floor

Lower Ground





Lower Ground

Second Floor



FEATURES

Kitchen/Dining Room	Two Bedrooms
Reception Room	Two Bathrooms

OTHER USEFUL INFORMATION

EPC	E
Council Tax Band	G

NEAREST TUBE STATIONS

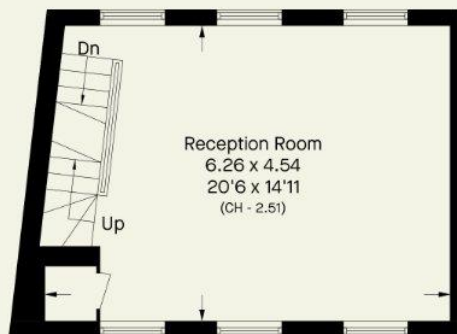
Marble Arch (Central line) and Paddington (Elizabeth, Circle, Hammersmith and City, Bakerloo and District lines)

Archery Close, W2

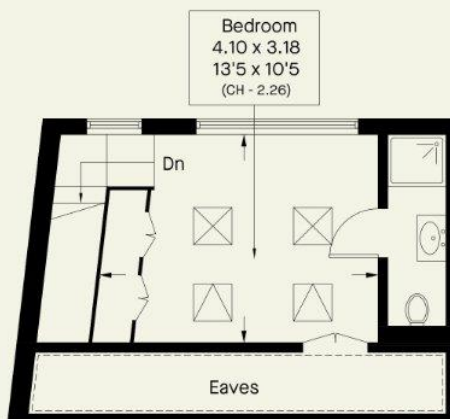
Approximate Area = 107.6 sq m / 1158 sq ft
Including Limited Use Area / Eaves (8.1 sq m / 87 sq ft)



[Dashed line] = Reduce head height below 1.5m



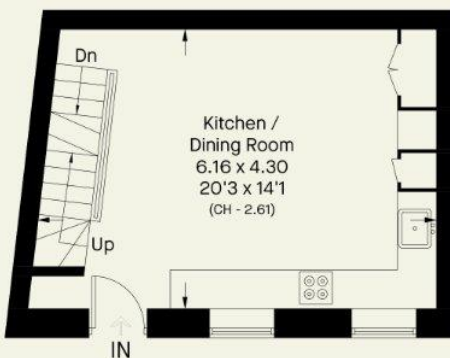
First Floor



Second Floor



Lower Ground Floor



Ground Floor

Whilst every attempt has been made to ensure the accuracy of the floor plan contained here, measurements of doors, windows, rooms and any other item are approximate and no responsibility is taken for any error, omission, or misstatement. Please check all dimensions before making a decision reliant upon them.

Notting Hill
8 Ladbroke Grove, Notting Hill,
London W11 3BG

Hyde Park
37-41 Sussex Place, Hyde Park,
London W2 2TH

South Kensington
4-5 Kynance Place, South Kensington,
London SW7 4QS

WWW.LUROTBRAND.CO.UK



Members of NAEA, ARLA, onthemarket.com. Lurot Brand (2) Limited T/A Lurot Brand. Registered in England No. 02035540. Registered Office: 37-41 Sussex Place, London, W2 2TH. VAT No. 629 099 505. www.lurotbrand.co.uk

We have produced these sales particulars as a general guide. We have not carried out a detailed survey of the property and have not tested the services, appliances, or specific fittings. Room sizes are for general guidance purposes and should not be relied upon for fitting carpets or furnishings. Pictures may have been digitally enhanced. Floor plans are not to scale. Fittings shown on floor plans may not match the actual layout or size of fittings at the property. None of the statements as to the property contained in these particulars are to be relied upon as statements or representations of fact. All statements in these particulars as to this property are made without responsibility on the part of Lurot Brand. The Seller does not make or give and neither Lurot Brand or any person in their employment has any authority to make or give any representation or warranty whatever in relation to this property.