



Ladbroke Walk, W11

LUROT BRAND

MEWS SPECIALISTS EST. 1971

020 7590 9955

lettings@lurotbrand.co.uk



External

Ground Floor



Ladbroke Walk, W11

Unfurnished

£1,730 PW

A three bedroom family house in one of the most sought after mews in London.

This double aspect house offers spacious living, and separate eat-in-kitchen on the ground floor. Flooded with natural light the first floor benefits from two double bedrooms and two bathrooms. The top floor houses a large master bedroom, en-suite bathroom and ample storage. There is also a separate utility room.

Unlike many mews houses, this house offers a large garden, ideal for family BBQs in the summer.

LOCATION

Ladbroke Walk, a sought-after address, is discreetly positioned between Ladbroke Terrace and Ladbroke Grove. There is a wealth of amenities including shops, bars, schools and restaurants to be found in the immediate area, and the entrance to Holland Park, providing green open space, is a short distance away.



Ground Floor

Ground Floor





Ground Floor

First Floor



FEATURES

House	Large Kitchen/Dining Room
Three Bedrooms	Utility Room
Three Bathrooms	Private Garden
Separate Living Room	Great Location

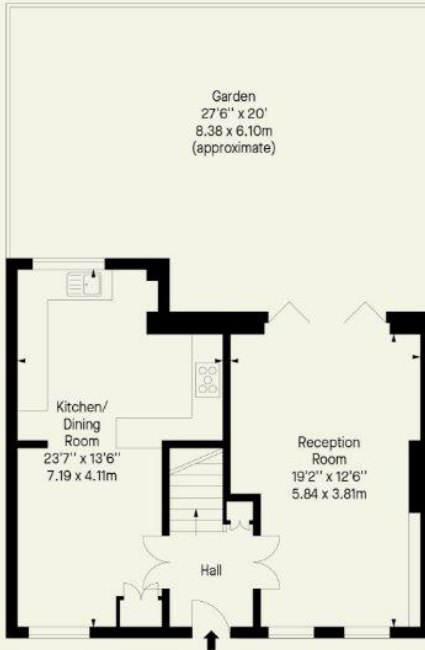
OTHER USEFUL INFORMATION

EPC	E
Council Tax Band	G
Deposit Amount	£10,380.00

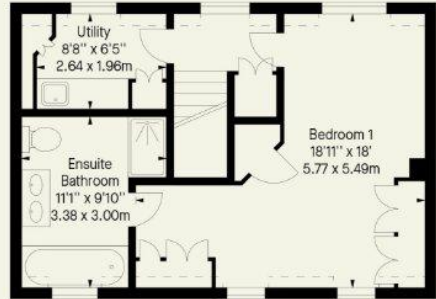
NEAREST TUBE STATIONS

Notting Hill Gate (Central, District and Circle lines) and Holland Park (Central line)
--

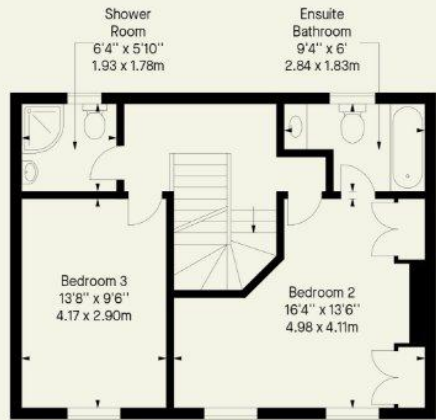
Ladbroke Walk, W11
 Approx. Gross Internal Area *
 1563 Ft² - 145.20 M²



Ground Floor



Second Floor



First Floor

Hyde Park
37-41 Sussex Place, Hyde Park,
London W2 2TH

South Kensington
4-5 Kynance Place, South Kensington,
London SW7 4QS

WWW.LUROTBRAND.CO.UK



Members of NAEA, ARLA, onthemarket.com. Lurot Brand (2) Limited T/A Lurot Brand. Registered in England No. 02035540. Registered Office: 37-41 Sussex Place, London, W2 2TH. VAT No. 629 099 505.
www.lurotbrand.co.uk

We have produced these sales particulars as a general guide. We have not carried out a detailed survey of the property and have not tested the services, appliances, or specific fittings. Room sizes are for general guidance purposes and should not be relied upon for fitting carpets or furnishings. Pictures may have been digitally enhanced. Floor plans are not to scale. Fittings shown on floor plans may not match the actual layout or size of fittings at the property. None of the statements as to the property contained in these particulars are to be relied upon as statements or representations of fact. All statements in these particulars as to this property are made without responsibility on the part of Lurot Brand. The Seller does not make or give and neither Lurot Brand or any person in their employment has any authority to make or give any representation or warranty whatever in relation to this property.