



# Ennismore Mews, SW7

**LUROT BRAND**

MEWS SPECIALISTS EST. 1971

020 7590 9955  
[lettings@lurotbrand.co.uk](mailto:lettings@lurotbrand.co.uk)



Lower Ground Floor

Second Floor



# Ennismore Mews, SW7

Unfurnished

£2,500 PW

---

Impeccably finished throughout this four bedroom mews house with wooden flooring and a feature glass staircase allows vast amounts of light into each room.

The property is arranged over four floors which offer ground floor living, lower ground floor kitchen and media room and well-designed bedrooms on the 1st and 2nd floors.

## LOCATION

The cobbled mews is located within walking distance of Harrods and other fabulous shops, restaurants of Knightsbridge and South Kensington as well as benefitting from been a stone's throw from Hyde Park.



Ground Floor

Exterior







Ground Floor

First Floor



FEATURES

Four Bedrooms	Dumb Waiter
Five Bathrooms	Kitchen/Breakfast Room
Reception Room	Sitting Room/Fifth Bedroom
Dining Room	Two Dressing Rooms
Cloakroom	

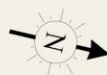
OTHER USEFUL INFORMATION

EPC	C
Council Tax Band	H
Deposit Amount	£15,000.00

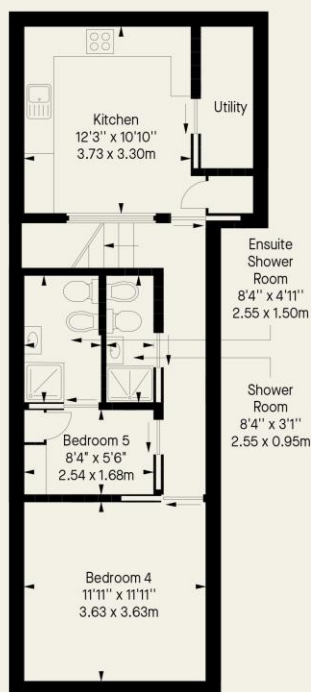
NEAREST TUBE STATIONS

Knightsbridge (Piccadilly line)

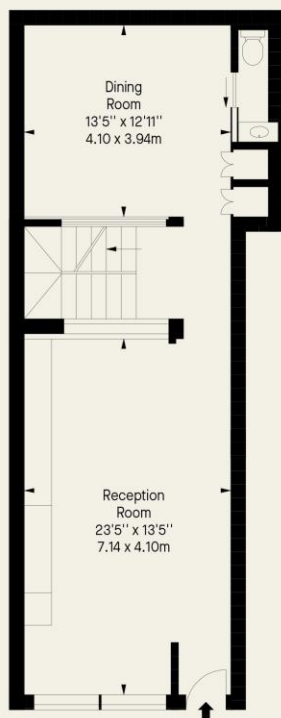
Ennismore Mews, SW7  
 Approx. Gross Internal Area \*  
 2260 Ft<sup>2</sup> - 209.95 M<sup>2</sup>



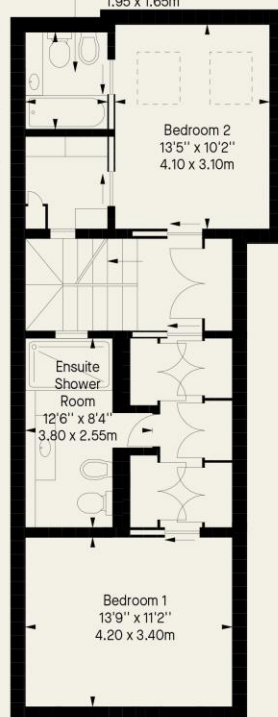
Second Floor



Lower Ground Floor



Ground Floor



First Floor

Notting Hill  
8 Ladbroke Grove, Notting Hill,  
London W11 3BG

Hyde Park  
37-41 Sussex Place, Hyde Park,  
London W2 2TH

South Kensington  
4-5 Kynance Place, South Kensington,  
London SW7 4QS

**WWW.LUROTBRAND.CO.UK**



Members of NAEA, ARLA, onthemarket.com, Lurot Brand (2) Limited T/A Lurot Brand. Registered in England No. 02035540. Registered Office: 37-41 Sussex Place, London, W2 2TH. VAT No. 629 099 505. [www.lurotbrand.co.uk](http://www.lurotbrand.co.uk)

---

We have produced these sales particulars as a general guide. We have not carried out a detailed survey of the property and have not tested the services, appliances, or specific fittings. Room sizes are for general guidance purposes and should not be relied upon for fitting carpets or furnishings. Pictures may have been digitally enhanced. Floor plans are not to scale. Fittings shown on floor plans may not match the actual layout or size of fittings at the property. None of the statements as to the property contained in these particulars are to be relied upon as statements or representations of fact. All statements in these particulars as to this property are made without responsibility on the part of Lurot Brand. The Seller does not make or give and neither Lurot Brand or any person in their employment has any authority to make or give any representation or warranty whatever in relation to this property.