



Ladbroke Walk,
W11

LUROT BRAND

MEWS SPECIALISTS EST. 1971

020 7590 9955
lettings@lurotbrand.co.uk



First Floor

Ground Floor



Ladbroke Walk, W11

Unfurnished

£2,250 PW

Beautifully presented five bedroom family home.

Recently refurbished to a high standard throughout, this house offers open plan living space with direct access to the private patio garden. Five bedrooms, separate study, laundry room and three bathrooms. The ultimate Notting Hill mews house with easy access to the Central Line via Holland Park or Notting Hill Gate Underground stations and Holland Park a short walk away.

LOCATION

Ladbroke Walk is a cobbled mews that runs parallel to Holland Park Avenue with easy access to all amenities including those in Notting Hill Gate and Holland Park. The eponymous green space is a short walk away too.



Street

Ground Floor





Second Floor

First Floor



FEATURES

Open plan kitchen/reception	Study
Patio garden	Laundry room
Five bedrooms	
Three bathrooms	

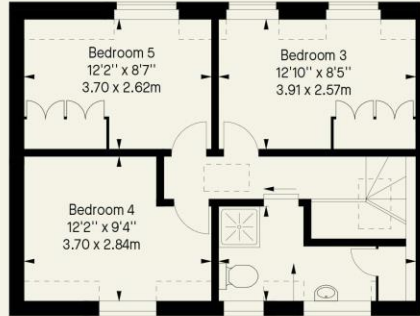
OTHER USEFUL INFORMATION

EPC	E
Council Tax Band	G
Deposit Amount	£13,500.00

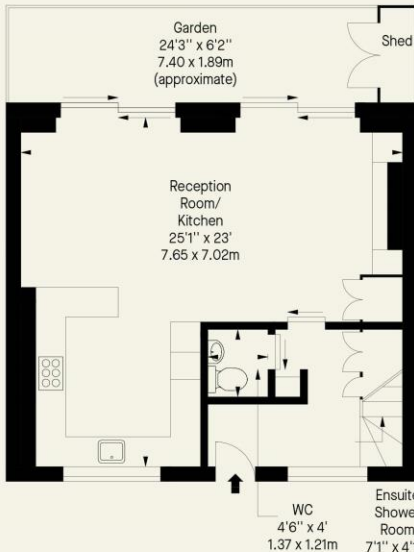
NEAREST TUBE STATIONS

Notting Hill Gate (Central, District and Circle lines) and Holland Park (Central line)

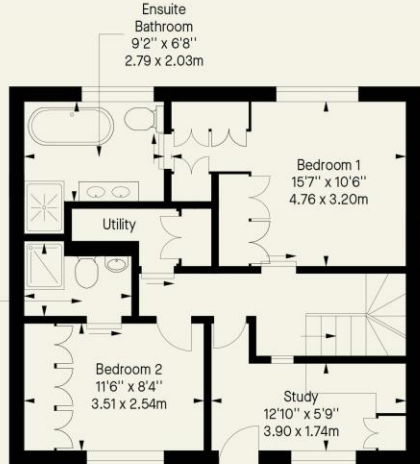
Ladbroke Walk, W11
 Approx. Gross Internal Area *
 1622 Ft² - 150.68 M²



Second Floor



Ground Floor



First Floor

Whilst every attempt has been made to ensure the accuracy of the floor plan contained here, measurements of doors, windows, rooms and any other item are approximate and no responsibility is taken for any error, omission, or misstatement. Please check all dimensions before making a decision reliant upon them.

Notting Hill
8 Ladbroke Grove, Notting Hill,
London W11 3BG

Hyde Park
37-41 Sussex Place, Hyde Park,
London W2 2TH

South Kensington
4-5 Kynance Place, South Kensington,
London SW7 4QS

WWW.LUROTBRAND.CO.UK



Members of NAEA, ARLA, onthemarket.com. Lurot Brand (2) Limited T/A Lurot Brand. Registered in England No. 02035540. Registered Office: 37-41 Sussex Place, London, W2 2TH. VAT No. 629 099 505. www.lurotbrand.co.uk

We have produced these sales particulars as a general guide. We have not carried out a detailed survey of the property and have not tested the services, appliances, or specific fittings. Room sizes are for general guidance purposes and should not be relied upon for fitting carpets or furnishings. Pictures may have been digitally enhanced. Floor plans are not to scale. Fittings shown on floor plans may not match the actual layout or size of fittings at the property. None of the statements as to the property contained in these particulars are to be relied upon as statements or representations of fact. All statements in these particulars as to this property are made without responsibility on the part of Lurot Brand. The Seller does not make or give and neither Lurot Brand or any person in their employment has any authority to make or give any representation or warranty whatever in relation to this property.