



West Mews, SW1V

LUROT BRAND

MEWS SPECIALISTS EST. 1971

020 7590 9955

lettings@lurotbrand.co.uk



Ground Floor

Ground Floor



West Mews, SW1V

Furnished, Part Furnished

£750 PW

A recently refurbished, modernised two-bedroom mews right in the heart of the Pimlico Grid.

Stunning 2-bedroom terraced house available for rent in a sought-after location. This beautifully furnished property is perfect for professionals or a small family seeking a comfortable and modern living space. The house boasts off-street parking, ensuring convenience and peace of mind. With a contemporary design and brand new features, this property offers a fresh and stylish living experience. Don't miss out on the opportunity to make this house your home. Contact us today to arrange a viewing.

LOCATION

Sandwiched equal distances between Pimlico's Prime Garden Squares, West Mews is ideally located for all the convenience of Victoria and Warwick Way's restaurants and shops, while being only moments' walk away from Elizabeth Street and Sloane Square.



Ground Floor

First Floor





Ground Floor

Ground Floor



FEATURES

Master Bedroom with En

Suite and Built-in Storage

Second Double Bedroom

with Built-in Storage

Large Reception Room

Kitchen

Family Bathroom

Off Street Parking

OTHER USEFUL INFORMATION

EPC

D

Council Tax Band

H

Deposit Amount

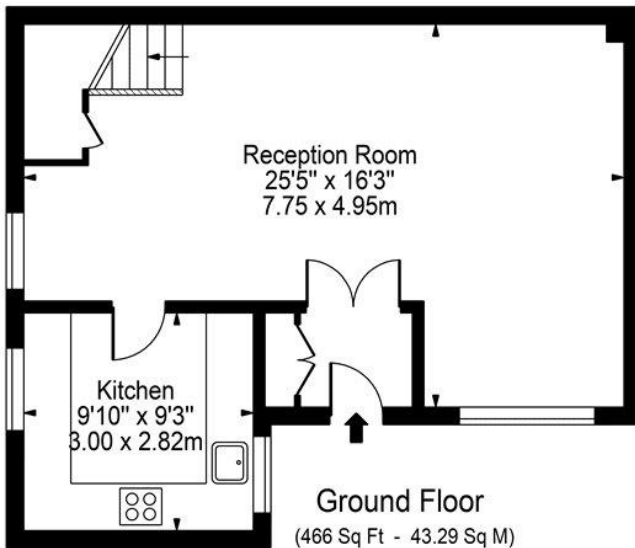
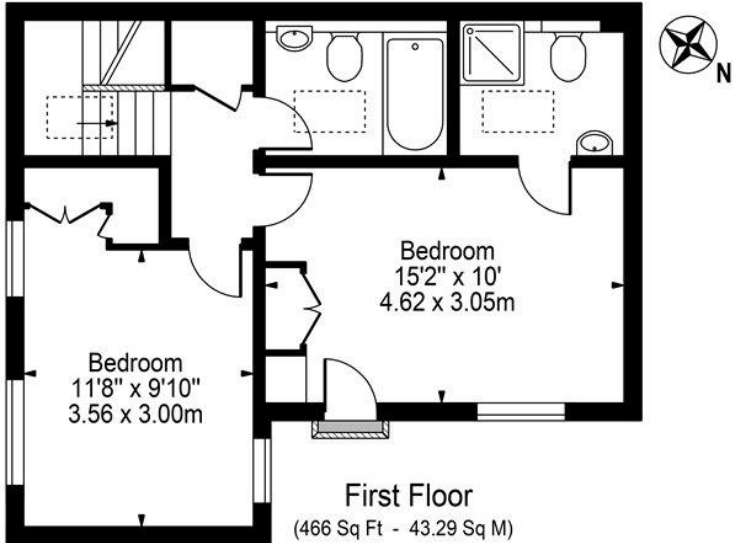
£3,750.00

NEAREST TUBE STATIONS

Victoria (District, Circle, Victoria, Mainline and National Coach Services)

West Mews, SW1

Approx. Gross Internal Area 932 Sq Ft - 86.59 Sq M



For Illustration Purposes Only - Not To Scale

This floor plan should be used as a general outline for guidance only and does not constitute in whole or in part an offer or contract. Any intending purchaser or lessee should satisfy themselves by inspection, searches, enquiries and full survey as to the correctness of each statement. Any areas, measurements or distances quoted are approximate and should not be used to value a property or be the basis of any sale or let.

Notting Hill
8 Ladbroke Grove, Notting Hill,
London W11 3BG

Hyde Park
37-41 Sussex Place, Hyde Park,
London W2 2TH

South Kensington
4-5 Kynance Place, South Kensington,
London SW7 4QS

WWW.LUROTBRAND.CO.UK



Members of NAEA, ARLA, onthemarket.com. Lurot Brand (2) Limited T/A Lurot Brand. Registered in England No. 02035540. Registered Office: 37-41 Sussex Place, London, W2 2TH. VAT No. 629 099 505. www.lurotbrand.co.uk

We have produced these sales particulars as a general guide. We have not carried out a detailed survey of the property and have not tested the services, appliances, or specific fittings. Room sizes are for general guidance purposes and should not be relied upon for fitting carpets or furnishings. Pictures may have been digitally enhanced. Floor plans are not to scale. Fittings shown on floor plans may not match the actual layout or size of fittings at the property. None of the statements as to the property contained in these particulars are to be relied upon as statements or representations of fact. All statements in these particulars as to this property are made without responsibility on the part of Lurot Brand. The Seller does not make or give and neither Lurot Brand or any person in their employment has any authority to make or give any representation or warranty whatever in relation to this property.