

MEWS NEWS

SUMMER 2020



Produced by

LUROT BRAND

EST 1971

LUROT BRAND

THE FIRST WORD IN MEWS

CONTENTS SUMMER 2020

- 04 WELCOME TO MEWS NEWS**
from Marlon Lloyd Malcolm
- 06 COMMUNITY SPIRIT**
by Zoe Dare Hall
- 10 REASONS TO BE CHEERFUL**
by Noah Pearlman
- 12 ONE-TO-ONE WITH...**
Aurelie Caspar, Owner of Boulangerie de Paris
- 14 EVERCHANGING MEWS**
Water Course Mews, by Martyn John Brown
- 18 SIMPLE HOUSEHOLD FIXES**
by Mollie Crowley
- 20 LB LOVES... STAYING HOME**
Our tried and tested recommendations
- 25 MEWS IN BLOOM**
2021 competition announcement
- 25 PROPERTIES FOR SALE**
- 37 PROPERTIES TO LET**



WELCOME TO MEWS NEWS FROM MARLON LLOYD MALCOLM

"Well what a difference a few months makes; we could never have imagined the situation we all find ourselves in."

Well what a difference a few months makes; we could never have imagined the situation we all find ourselves in. Certainly when the Lurot Brand offices closed temporarily and our team started working from home like many others, we did not expect to still be in lockdown for the foreseeable future.

What has been remarkable about the last month or two are all the incredible heart-warming acts of bravery, strength and collective goodwill our country has shown. There's no doubt about it, in the midst of a global crisis, the UK is united, displaying a truly British spirit.

Throughout this edition, you will hear stories from people before and during the Covid crisis and about how our celebrated mews streets have benefitted from the sense of community that they bring.

Inside you will find a great 'One-to-One' with Aurelie Caspar, a multiple mews owner who has a local bakery. Previously baking bread for London's finest hotels and restaurants, Aurelie has since created a wonderful bread delivery service for the mews throughout Paddington and beyond. In this issue of Mews News, our own Noah Pearlman takes a closer look at north London's villages and discovers how they are reacting to the lockdown.

But we all need a distraction from Covid, so we have included a fantastic insight

into how London's rivers and tributaries have shaped the mews we see today. And if that doesn't distract you, then perhaps you should turn to page 24 and read more about how we are finally bringing back our 'Mews in Bloom' competition, with professional judges, prizes and awards. We hope to provide motivation to those wanting to invest some of their time in the green fingered joy of dressing their street with an abundance of flora.

The complete omission of anything property market orientated is deliberate. For now we thought it best to create something positive and celebrate the communities we are part of. I do hope you enjoy this edition, and from all of us at Lurot Brand **Stay home, Protect the NHS, Save lives.**

Please be aware that at the time of this edition of Mews News going to press, the country was in lockdown with the next Government review to be completed by the 7th May.

In case you wish to discuss property, we are still working every day from home and finding it surprisingly easy! Who knows maybe estate agency doesn't need a shop front anymore?!





HOW LONDON'S MEWS STREETS KEEP THE COMMUNITY SPIRIT ALIVE BY ZOE DARE HALL

On a typical day, Spear Mews – a cobbled enclave of 16 houses set just off Earl's Court Road, is an oasis of calm behind the busy high street. The neat rows of two-storey houses are festooned with flowers and flags, and tourists routinely wander through, taking photos of this quintessentially English slice of life.

These, though, are far from typical times. The nearby shops and restaurants are shut and the pavements deserted as the country adjusts to the new rhythm of days spent at home. But for this classic late 19th Century mews, with its narrow entrance at each end designed to accommodate horse-drawn carriages servicing the nearby mansions, these challenging weeks of lockdown have seen its close-knit community come into its own.

MEWS' HEART AND SOUL HELPING IN LOCKDOWN

Younger residents have been delivering food to elderly residents. Many stand on their balconies on Thursdays at 8pm to clap for health keyworkers over virtual drinks and chats across the cobbles. And – pre-lockdown – when anyone was away, neighbours would always check on people's houses, cars and take in parcels. There is also a reassuring sense of continuity. Most of the houses are owner-occupied and they rarely change hands.

Spear Mews – where pop stars Dusty Springfield, the Bee Gees and Small Faces' guitarist Ronnie Lane all lived in the late 1960s, also has a reputation for its party spirit. Every summer, residents hold an annual street party, with a live band, plentiful food and drink, dancing, and games for the children.



MEWS – SOME OF MOST SOCIABLE STREETS IN LONDON

“The council closes the street to traffic for the weekend, and I put out flags across the street, including those representing the many nationalities who live here. This year’s party is obviously postponed – but we’ll celebrate it even more when we can,” says John Walker, a retired oil executive who has lived in the street since 2003.

Much has been made of the revival of community spirit in these challenging times of pandemic and lockdown – and few places embody that spirit more than London’s mews streets. Some have a distinct character with their colourful houses, such as South Kensington’s Cranley Mews, or murals such as the Alpine scene on Reece Mews.

Others are renowned for their friendly spirit. In Paddington’s Bathurst Mews, which is lined with picnic tables and olive trees, the sounds of the nearby horses, church bells and even a blacksmith hammering away lend the street a rural feel, says *Antoine Lurot*, chairman of *Lurot Brand*, and a resident of Bathurst Mews since 1992.

The mews is also said to be one of the most sociable streets in London, having been the first to launch a summer street party, 25 years ago. “It’s hard to resist the community spirit,” says Antoine Lurot. “About half of the houses are tenanted, so many people only stay for two or three years, but they immediately become part of the community.”

ARTISAN BREAD BRINGS JOIE DE VIVRE TO W2 AND W9 MEWS

This neighbourly spirit has extended in recent weeks to supporting local businesswoman Aurélie Caspar, whose artisan bakery *Boulangerie de Paris* supplies prestigious restaurants including *The Wolseley* and *Annabel’s*. But on the day the lockdown was announced, Caspar suddenly found herself with 30 staff and no customers.

“We used our mailing system to send out leaflets to more than 1,000 addresses, and now Aurélie delivers fresh bread and cakes in her electric van to all the mews streets in the W2 and W9 postcodes,” says Antoine Lurot. “Mews streets are ideal for home deliveries at this time as you can deliver straight to the front door.”

KENSINGTON MEWS COMMUNITY COBBLES TOGETHER

In *Kingsley Mews*, a tiny Kensington cul-de-sac of just seven houses, the residents have collaborated in a community effort of a different sort – to cobble their street.

The project has “awakened” the street’s neighbourly spirit, says resident Clare Allen. “The street had always been unsightly with cracked paving slabs, weeds and puddles. It’s set behind a mansion block and it always looked like a service road – one that got worse each winter,” says Allen, a self-employed designer who has lived in her three-bed mews with her husband Tony (their children have now flown the nest) for 20 years.

With the help of *Lurot Brand’s* director *Marlon Lloyd Malcolm*, who saw a great opportunity to galvanise the community and enhance their street, almost every owner agreed to be part of the project. “The most motivated were the owner-occupiers who would get the greatest benefit, but it certainly unlocked the community spirit as we were all pushing in the same direction,” says Allen.

The project was a huge and relatively costly undertaking – including hiring a property lawyer to track down the street’s freeholder, who lives overseas. “There were also in-depth investigations of where and how deep the pipes were, and the costs of excavating and removing all the existing hardcore,” says Allen. “Cobbling is an expensive option, but having already spent so much on the legal element and excavation, it seemed mad to then just concrete over it.”

Lurot Brand knew just the company to take on the challenge – the family-run building firm *DW Clayfield*, based in Amersham, who had cobbled



Kingsley Mews

others mews streets locally, including *Bathurst Mews* and *Simon Close* in Notting Hill. Work took place over five months last winter.

“It’s gruelling, massively physical work, mixing the colours of the stones, hand-pointing everything. It really is a craft,” says Allen. “They did it in sections, being careful to always leave a side for us to walk on, and they managed to remain upbeat and win everyone over when things were at their muddiest and the work dragged on due to bad weather.”

The total cost of building work was £91,000, with legal fees and surveys on top. But the end result is “absolutely delightful,” says Allen. “It’s amazing how it changes not just the surface of the street, but the entire atmosphere. It has engendered a new awareness and pride, neighbours have bought new pots and plants and people now meet outside and chat. It has given everyone a real lift.”

KERB APPEAL OF MEWS PAY OFF

The cobbling project is likely to have a similar effect on house values too. Though Brexit and now Coronavirus have hit the housing market hard, in the longer term the kerb appeal of a mews street can add 20-30% to house values, according to Lurot Brand.

“I kept noticing that houses on *Kynance Mews* – which is a continuation of Kingsley Mews – would achieve 50-100% more on a pounds per square foot basis, and the only

real difference was that *Kynance Mews* was cobbled and better cared for,” says Marlon Lloyd Malcolm. “The greatest impact, however, has been on the enjoyment of living there for the existing residents. This in turn will lead to a better sense of community and pride in the street.”

Allen agrees. “We’re a very small and low-key mews. But this has definitely brought us all together and been a very positive thing for our street.”



Kynance Mews



REASONS TO BE CHEERFUL MEWS RESIDENTS KEEP SMILING FROM A DISTANCE

By Noah Pearlman

As I write this I hope you are all safe and well in these challenging times.

Originally, I planned to write about the North London property market's continuing uplift following a very strong start to 2020. However, on the 23rd March, like millions of others, I found myself working out how to cope with Covid-19 - this generation defining pandemic affecting us all.

Like you, I managed to set up an office from home and over a month down the line, I am now used to my new work space and routine and have found a way to navigate business through this unprecedented time.

KINDNESS IN A CRISIS

Beyond the unimaginable impact that this virus is having, it is heartwarming and inspiring to see how our country pulls together from the army of hero key workers helping to heal, feed, support and generally keep the nation protected and operational to the support total strangers offer each other, the acts of kindness both large and small and of course, the weekly clapping every Thursday across the country has become a household celebration of our amazing NHS staff, all key workers and so much more.

Among the mews community, the sense of spirit and goodwill is palpable. Mews properties and their residents have always been renowned for their strong sense of camaraderie and this neighbourly attitude has only been heightened by the lockdown. Hearing stories of how our mews communities have been pulling together has really made me proud of being a part of this most creative and supportive group.



MEWS LIFE IN LOCKDOWN

Many of us mews residents were already fortunate enough to have a long standing support network on our mews, where helping each other came as second nature. We would enjoy socialising together, sharing a drink on the cobbles or a jovial evening out at the local pub for the weekly quiz night was something we took for granted.

But in March, when London entered into lockdown, we all found the world we knew turned upside down. It didn't take long for the mews micro communities to step up to the challenge in their own unique way. What follows are just a few of the many stories that have been shared with me over this most testing time.

MEWS 'HAPPY HOUR' EVERY TUESDAY

Catching up on a regular basis is a recurring theme in all mews communities but some have this ritual down to a fine art. This includes those who like to catch up on the first Tuesday of the month. In this mews, lockdown has turned this into an essential event every Tuesday (you know who you are)! At 5pm sharp, the front doors along this mews spring open with military precision, most with drink in hand and at a safe distance. Thanks to the amazing weather, another mews has taken this one step further holding a street dinner party with everyone sitting around their garden tables outside their homes.

STAYING CONNECTED

During this lockdown, technology has been a positive for so many people, families and friends. Even the most resistant technophobes have turned to and embraced using video-calling; whether you are a Facetimer, a Zoom convert, a Google Hangout stalwart or any of the many other platforms that seem to have magically appeared, we can all now feel connected and enjoy a swathe of digital parties, drinks, games and so much more.

RESIDENTS ON A ROLL

Many mews communities were no strangers to WhatsApp, but since this period of isolation began an increasing number of WhatsApp groups are using this tool to stay in touch, offer help with grocery shopping, collect prescriptions and check in with a morning roll call to make sure everyone is well or communicate something more urgent.

MEWS REVIEWS FROM ARMCHAIR CRITICS

My favourite new development is probably 'a night in at the theatre'. Some of you may have been delighted by the free live streaming of the National Theatre classics via their YouTube channel on a Thursday night at 7pm. In one mews, and probably more, this has become the new 'book club' with the community meeting the following evening to review the show over a glass of wine and a group video call.

I did not set out to write these wonderful tales, but as I have spoken with clients these stories came out in conversation. I have been struck by how the life of a mews dweller offers something quite unique, where community spirit plays such an important role in this huge, courageous, wonderful city.

I know there are so many more stories out there and we would love to hear them. So please email me at noah@lurotbrand.co.uk





ONE-TO-ONE WITH MASTER BAKER AND MEWS OWNER AURELIE CASPAR

Owner of Boulangerie de Paris

Boulangerie de Paris is an artisan bakery owned and run by two sisters. Since 2007, the bakery has provided London's most renowned hotels, restaurants and caterers with its delicious handmade breads.

The family run bakery is passionate about sharing their love of baking and sisters, Aurelie and Marie-Laure pour their hearts into baking the best quality bread and the best service seven days a week, all year long.

"We work hard to meet the demand of the most prestigious chefs - developing bespoke recipes according to their ideas. We believe that bread should be made the old fashioned way, using only natural ingredients from the finest sources and long fermentation methods."

How important is and what do you need and want from your work space?

- Most of all I need to be busy surrounded by a great team with a friendly atmosphere! My bakery runs 24/7 every day of the year so when things are quiet that normally means something's wrong! Luckily for me that's rarely ever happened. I really believe that a happy work place makes for more delicious bread and contented customers!

What do you enjoy most about being based in this part of London; tell us about some of your favourite haunts from local markets to cafes to galleries.

- Well, I am really lucky to live close to Hyde Park and Lancaster Gate which means I have plenty of open green space on my doorstep in Hyde Park, but also means I am close to absolutely everything. I have a great choice of independent shops, restaurants and cafes all within walking distance of my home. You may not be surprised to learn that one of my favourite food shops is 'La Fromagerie' in Marylebone, which in my view, sells the best tastiest cheeses in London!



Who is your biggest baking influence (icon) from the past or present?

- I need to look no further than my own family and my sister Marie-Laure! She has to be one of the most passionate bread bakers I have ever known. She is so creative and talented and I trust her so much that she has developed all our recipes here at Boulangerie de Paris.

We know the French are the masters of breadmaking, but what do you consider the best produce or dish the English can offer?

- That's a tough one, but I would say the good old-fashioned bread-and-butter pudding! It's a very practical satisfying way of 'recycling' old stale bread. Who could imagine that when spices and a simple batter are added and it's baked, something so humble could taste so delicious (well not for the waist-line...). Served with vanilla custard or cream and it is elevated to a first class proper English pudding.

If you could choose one person to eat out with, who would it be and where would you choose to go and why?

- That's easy - the Queen! I really admire her strength and serenity in all circumstances. We would go and have dinner at The Ritz and enjoy a delicious Beef Wellington cooked by Chef John Williams.

Which object in your kitchen would you never part with and why?

- My hands! No questions, for us bakers that's our most important tool! Of course a reliable good quality oven is also essential.

What is your own guilty pleasure when it comes to choosing bread and pastries or cakes?

- I guess it is part of the French DNA because for me it has to be a freshly baked 'baguette de tradition'. A nice baguette goes with everything at any time of day. French bakers consider the baguette such an integral staple of French life and culture that they are even fighting to get it listed as part of the UNESCO world heritage list!

What view in London, do you never tire of?

- The view from Millennium Bridge! You can see most of London's landmarks from the bridge and it's beautiful at any time of day or night, whatever the weather.

Your favourite place to get fresh air and thinking time (obviously in normal times!).

- I am lucky that I need only to step outside my mews house and spend time at my picnic table and even luckier that I can still do this outside of 'normal times'!

Why is London important to you as a place to be located?

- For me, London genuinely offers diversity and a multi-cultural environment, which adds to the energy and vibrancy of the city. There are only a few places in the world where I have experienced such a mix of cultures and London is definitely one!

Tell us if you had to choose one café across the world, where would you go for that special coffee and something freshly baked?

- I'd head straight to Le Cafe of The Musee Jacquemart-Andre in Paris' 8th district. It is a hidden gem, but now you know! They serve a delicious brunch with pastries from some of the best pastry chefs in Paris (the Pâtisserie Stohrer and Michel Fenet's Petite Marquise).

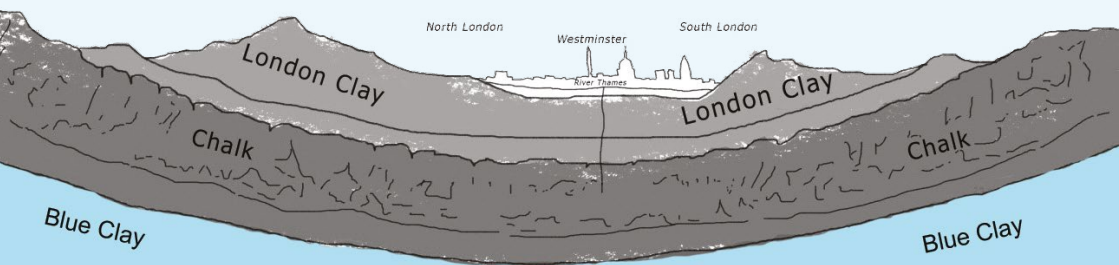
EVERCHANGING MEWS

WATER COURSE MEWS

where the river runs through

Geological cross section
of London Basin

London Mews are named after many varied and interesting things. The names of most Mews relate to the name of a person (Adams, Browning, Portman), or a place (Astwood, Chesham, Horbury). Their names may have an association with other location features such as a market, a railway, or a station. Some Mews are named after water or river features – spring, brook, and conduit for example and when this occurs, the names can be followed to track the river's path.



LONDON'S ICE AGE LANDSCAPE

London lies at the lower end of the Thames flood plain in a lop sided basin upon a bed of sand, gravel, clay and chalk, deep beneath which are rocks. The London clay most people are familiar with is more than 50 million years and appears as a thick, sticky and pliable reddish brown soil. Above this is a mixture of sand and gravel through which springs rise in places like Hampstead, Islington and Hackney. The glaciers of the Ice Age formed the rivers which now descend from the upper levels of the basin to the River Thames.

POLLUTION OF LONDON'S RIVERS

Originally the rivers were sources of fresh water and fish as well as the means for sewage dispersal. Due to the expansion of London during the nineteenth century they became foul public health hazards. No longer exposed or easily identifiable, the majority are now buried in culverts, pipes and sewers.

Fourteen watercourses still flow into the Thames in London (not all shown to the right).

ANCIENT TRIBUTARIES AND NATURAL SPRINGS

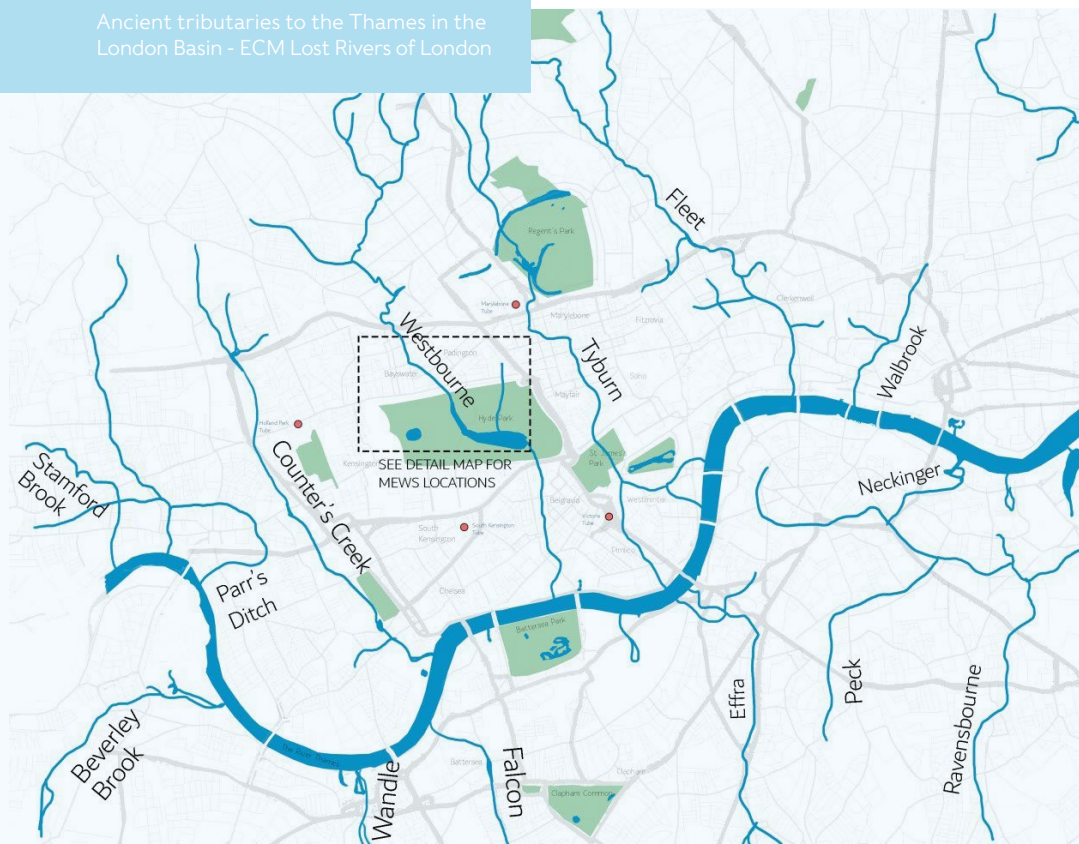
In terms of its volume, but not the number of Mews it encounters along its route, the most significant of the tributaries is in fact the 'Fleet' also known as the River of Wells, which in the past has been recorded as being more than 20 metres wide. Rising in two ponds on Hampstead Heath, it flows down the Fleet Road to Camden and then onto Kings Cross. At one time the area around Kings Cross Road was reportedly filled with wells, springs and pleasure gardens. The Fleet then proceeds towards Farringdon, where in Turnmill Street it once powered three watermills. From Farringdon Road

it finally empties into the Thames at Blackfriars. The Fleet lay open until the foul discharge from public lavatories, slaughterhouses and other industry caused it to clog up with silt and rubbish.

TSUNAMI OF SEWAGE IN 1846

After the great fire of London in 1666, Sir Christopher Wren widened the Fleet to create a canal with stone wharves on both sides and a new bridge at Holborn. This proved an impractical solution and it was built over and after the 1820's became Farringdon Street. The Fleet remained buried until it burst free in 1846 destroying roads and buildings in a tsunami of sewage. Today, the site is covered with the modern Holborn Viaduct.

Ancient tributaries to the Thames in the
London Basin - ECM Lost Rivers of London



LONDON'S HISTORIC RIVER TRIO

The three most significant rivers in respect of the Mews and the ones that determined their locations and shaped their development are the Tyburn, The Westbourne and Counter's Creek.

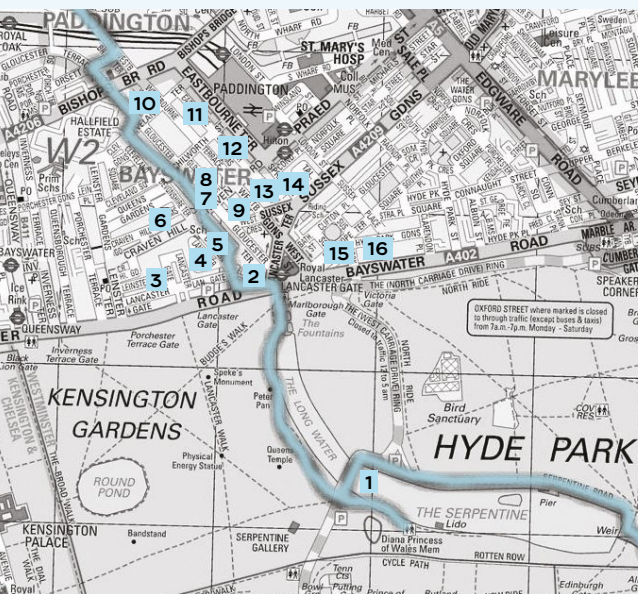
From a spring in Hampstead, the Tyburn then passes through Swiss Cottage and Regent's Park before it joins another tributary of the Thames and follows Marylebone Lane across Oxford Street through Mayfair into Piccadilly (once called Tyburn Road) across Green Park passing Buckingham Palace, continuing through Victoria and Piccadilly before entering the Thames by Vauxhall Bridge. In so doing, it passes in close proximity to five Mews and directly crosses Brook's Mews, Davies Mews and Hinde Mews.

The Westbourne – now known as the Ranelagh Sewer – rises in Hampstead and makes its way to the river in Chelsea. En-route it passes through Kilburn, Paddington and Hyde Park. Passing through Bayswater which was named after the river, and in turn contains the Mews shown on the detailed map (see below). The Westbourne indirectly passes approximately fifteen Mews, including five directly: Orsett Mews, Gloucester Mews West, Upbrook Mews, Brook Mews North, Elms Mews, and Cadogan Lane. Proof of its existence can be

seen in a great pipe above the platforms of Sloane Street underground station.

Counter's Creek – Whilst carrying less water than the Westbourne, Tyburn or Fleet (largest of the tributaries in this area), Counter's Creek is geographically significant as it forms the boundary between the boroughs of Hammersmith and Fulham and the Royal Borough of Kensington and Chelsea. Its source is near Kensal Green cemetery and flows underground in a south easterly direction for approximately five miles through White City, Olympia and Earl's Court before reaching Chelsea where it enters the Thames somewhere near the power station in Lots Road. Along the final few hundred metres of its journey it is known as Chelsea Creek. En route it passes only Russell Gardens Mews and Cluny Mews. Preferring cemeteries to Mews, it runs close to Hammersmith cemetery, Brompton cemetery, and Fulham cemetery. Unlike other hidden rivers, which have a multitude of streets and Mews named after them not one is named after Counter's Creek.

MEWS that follow the course of the River Westbourne (Ranelagh Sewer)



1. THE WESTBOURNE RIVER
2. Elms Mews
3. Leinster Mews
4. Lancaster Mews
5. Craven Hill Mews
6. Brook Mews North
7. Upper Brook Mews
8. Gloucester Mews
9. Smallbrook Mews
10. Westbourne Terrace Mews
11. Eastbourne Mews
12. Chilworth Mews
13. Conduit Mews
14. Spring Street
15. Brook Street
16. Hyde Park Garden Mews



Smallbrook Mews - built in line with the Westbourne

Upbrook Mews - which is about 3 metres below the level of the main houses around it



MEWS' NAMES RIPPLE THROUGH THE CITY

In Bayswater a number of the Mews are named after their proximity with the local river - the Westbourne - including Upbrook, Smallbrook, Lower Conduit - all lie somewhere along the course of the river which has been a physical feature of the landscape for considerably longer than any Mews has existed. As can be seen from the annotated map above, the river runs roughly along the line of Gloucester Terrace and is noticeably lower than the surrounding areas, ranging between 19 and 20 metres above sea level. There is a perceptible rise above the rivers to the adjacent streets which come in at roughly 22 metres above sea level. This rise is most apparent in the aptly named Craven Hill area.

LONDON'S HIDDEN RIVERS CARRY MURKY MYTHS

The hidden rivers symbolise the changing London landscape over the last two thousand or so years. They are the subject of much literature and painting. People are as fascinated with them today as they have ever been and for many reasons: G.W.Lambert in his survey of the Geography of London's Ghosts concluded that 75% of London's paranormal activity takes place near hidden waters. There is of course some logic in this as pagan and other religious rituals often require some form of cleansing and/or dispersal.

FRESH WATER RISES OVER FOUL THROUGHOUT LONDON

The rivers are now better hidden than exposed. Thankfully they are no longer required for the discharge of sewage; indeed this use dried up in the 15th century as the waterways were literally clogged with detritus. Today, the Victorian sewage system designed by Joseph Bazalgette is being supplemented with a new relief system under the Thames which has been designed for another 100 years. Fresh water is now separated from foul water and supplied by the London ring main.

Hidden as the rivers are, they remain traceable thanks to the streets and Mews of London. Everchanging as the Mews are, with a modern sewer system and a modern water main they should hopefully remain immune from any unpleasant undercurrents into the foreseeable future.

This article was written by Martyn John Brown MRICS, MCIOB, MCABE, C. Build E, MNAEA, MARLA, MISVA of Everchangingmews - www.everchangingmews.com who is a specialist Mews Consultant.

Everchangingmews is owned and run by Martyn John Brown MRICS, MCIOB, MCABE, C. Build E, MNAEA, MARLA, MISVA who provides professional surveying advice - For surveys, valuations and Party Wall matters contact: info@everchangingmews.com or call Martyn on **0207 419 5033**.

SIMPLE HOUSEHOLD FIXES TO HELP IN SELF-ISOLATION AT HOME *By Mollie Crowley*



For so many of us since the lockdown, our home has become more than just a home, it's become an office, a classroom, a crèche, a social hub and hopefully a safe place from which we should seldom stray.

With more people than normal sharing the same space and families spending far longer inside the home than before due to lockdown, it's not surprising that we will notice more maintenance problems appearing, from leaky taps, to cold radiators, smelly drains and squeaky doors. And chances are, these things will irritate us more because we are spending so much more time at home.

Sometimes, the most annoying problems around the house require only a simple fix but the self-satisfaction (not to mention brownie points!) that comes with solving the

problem can be revelatory. Not to mention the money you save and of course, the importance of sticking to social distancing by not having tradespeople in your home.

So we've compiled a mini maintenance repair guide with advice on how to try and fix these minor issues around your home. Once you've mastered the DIY, you'll realise you had skills you never knew you had – one of the many positives this crisis has taught you and you may just get a clap from your own family members...



UNCLOGGING DRAINS

There are numerous ways to unclog your drains at home without the need of a plumber. Mix 1/3 of a cup of baking soda with 1/3 of a cup of vinegar in a measuring cup, it will start to fizz, and you should immediately pour it down the clogged drain. The fizzing should help to remove the grime that's causing the clog in the pipe. Leave it for at least one hour and flush the drain through with *hot* water. Alternatively, don a pair of Marigolds to use an old wire clothes hanger- make the hanger as straight as possible and create a hook at one end, use the wire to fish the unpleasantness out of the drain. Remember to always be pulling out so you don't push the grime further in!

BLEEDING YOUR RADIATOR

This is often overlooked when people realise their radiators are not heating up efficiently, so take the extra time and warmer weather to carry out a radiator inspection. All you need is a radiator key (available online or at any hardware/DIY store for a few pennies). You may have noticed during the winter that your home was not heating as well as usual and a common cause is that the radiators may need to be bled.

Turn your heating on and find out which radiator is not performing as well as the others, run your hands across the whole radiator and if there are parts which are still cool it could mean that air is trapped. Turn your heating off and place a towel underneath your radiator. Once the radiator has cooled down insert the radiator key into the bleed value, turn anti clockwise and listen for a hiss. Once the hissing has stopped and you notice drops of water being released, turn the key back. Now the radiator is free from any air lock, it will heat up evenly.

FIX SCUFFED FLOORING

Scuffed wooden flooring can look unsightly, however this hack can help freshen up the room. You'll need an old tennis ball and broomstick handle or something similar. Put the ball onto the end of the handle and simply rub the scuff marks away!

SQUEAKY FLOORS

Squeaky floorboards are very irritating, especially when we are walking across them all day everyday whilst working from home. To fix the problem, simply sprinkle talcum powder generously onto the floor and sweep it into the cracks.

DOOR KEY GETTING STUCK

If you are having trouble with a stiff lock find a graphite pencil and use a pocketknife or something similar to shave off some graphite. By filling the lock in with these, the graphite acts as a lubricant which should make locking and unlocking the door much easier.

DRYER DUCTS

If your tumble dryer doesn't seem as efficient as it used to be, it's worth checking if the dryer duct is blocked. To fix the problem, simply unplug the dryer and put your Hoover extension into the duct so it hoovers up all the lint. Not only will your dryer work better but it should save you money on your energy bills!

SQUEAKY DOOR

If one of your doors is continuously squeaking it could be down to a problem with the hinge pin. Remove the hinge pin on the appropriate door hinge and apply Vaseline or similar type of lubricant to the pin. Put the hinge pin back and the test the door out a few times to check the squeaking has disappeared.

REMOVE LIMESCALE FROM YOUR SHOWERHEAD

Not only is limescale on your shower head very unsightly, but it also stops the shower performing at its best. To remedy the problem, go grab a bucket or pan and fill with white wine vinegar. Put the showerhead into the pan and ensure it is completely covered in the vinegar. Leave for a minimum of 30 minutes but preferably overnight for a really effective descale. Rinse the shower head and all the holes should now be free of limescale.

LB LOVES...

STAYING HOME

*For those staying at home,
we have put together a list of
things to keep you occupied...*

enjoy!



1.

EXERCISE

- Yoga with Adriene offers anyone from beginner to experienced yogi, a chance to create a space and time for you to be calm and connect with yourself.

Follow Adriene for any one of hundreds of yoga routines from her light filled studio and spot Benjy the dog chilling out too. The beauty of yoga is that it really can be practiced anywhere and all you need is your body and a mat or towel. You achieve instant feel good benefits both physically and mentally, which at this point in time has never been so vital.

For the more adventurous you could challenge yourself to do a handstand.

www.youtube.com/user/yogawithadriene

- Try Peloton from the comfort of your own home. The Peloton app has received outstanding reviews and what's great is that the at-home classes don't need equipment and you have 90 days for free. It offers an entire range of activities with experienced online instructors from running, strength training, yoga, core exercise classes and allows you to track your activity, set goals and monitor your fitness levels from your device.

www.onepeloton.co.uk/app



2.

ACTIVITIES

- For some families, the lockdown has meant rediscovering the old family favourite board games and sitting round the table together. Undoubtedly, some are more competitive than others and there will be tears and tantrums, but practice makes perfect! If you're bored with winning at Scrabble, cheating at Cluedo and Monopoly looks set to end in divorce, then we recommend the word game Bananagrams. The beauty of this word game is that it can also be played alone or with others.
www.bananagrams.com/game/bananagrams
- Immerse the whole family in two million years of art and culture without leaving the house. The wonders of the British museum can be accessed via a virtual tour. This means your children can go on adventures back to ancient Egypt or navigate their way through Oceania and experience how warriors lived. Whoever said home schooling wasn't fun? Using this digital aid will teach you and your children something new and wonderful and remind you that there is still a whole world of discovery out there.
www.britishmuseum.withgoogle.com
- If you want to make Monopoly more personalised to your mews, we have created Lurot Brand monopoly, the same as regular monopoly just with Mews streets instead of the usual streets. To buy your box, email **info@lurotbrand.co.uk**



3.

FOOD & DRINK

- Patty and Bun have teamed up with Hammersmith family run butcher, HG Walter, renowned for their superior meat which London's chefs swear by. Patty and Bun make burgers that are full of good things, Smokey Robinson (not the band) is something of a legend. The two companies have joined forces so you can now get burger kits delivered to your home, with the sauces and accompaniments to serve the best burger within the M25 – what's not to like?

www.pattyandbun.co.uk
www.hgwalter.com

- The Cheese Bar are delivering lockdown survival kits.

www.thecheesebar.com/the-truck

- What better way to unwind than with a very special glass of something. The independent wine merchant, Corney & Barrow have been in the business for 240 years. Now that for us all staying in is the new going out, this could be the perfect time to experiment with a new wine and expand your knowledge. Why not create a wine tasting group and share via Zoom or Whatsapp? Best wine selections.

www.corneyandbarrow.com



4.

SOCIALISE

- There's been a wave of quizzes being organised online and they've really caught on throughout the country. We like the fact that this is a chance to have fun, join a celebrity pub quiz and raise money for the NHS.

*[www.riversidestudios.co.uk/
book/charity-quiz](http://www.riversidestudios.co.uk/book/charity-quiz)*



5.

KEEP YOUR BRAIN ENGAGED

- Want to switch off and unwind, then we suggest you get an adult colouring book to help you relax. It's not just children who like to colour and after the rainbows are finished, why not join in with your grown-up colouring book from the rainforest to Aztec patterns, there's something designed for everyone and all ages.

*[www.waterstones.com/book/prettycitylondon
-the-colouring-book/siobhan-ferguson](http://www.waterstones.com/book/prettycitylondon-the-colouring-book/siobhan-ferguson)*

- It's a well-known fact that the less you do, the less you start to remember. Moving from hectic daily life to suddenly not having the same structure and a different routine may make you feel you're losing your 'sharpness'. Give your mental agility a workout and boost your brain productivity with a brain training app.

www.elevateapp.com

MEWS IN BLOOM 17TH APRIL 2021

With all the extra time that people might be getting in the current environment, we have decided to re-launch our Mews in Bloom competition for 2021.

This will be a chance to get your mews community together and your green thumbs working all for the chance of winning the Mews in Bloom 2021 Award.

We will be announcing judges and more dates in the Autumn edition of Mews News, so keep your eyes peeled.



SW3

BURNSALL STREET

£6,000,000

- 4 Bedrooms
- 2 Reception Rooms
- 3 Bathrooms

- 2123 sqft
- Patio
- Freehold

FOR SALE

FOR SALE

SW7

PETERSHAM MEWS

£4,000,000

- 3 Bedrooms
- 1 Reception Room
- 2 Bathrooms
- 2177 sqft
- Roof Terrace
- Garage
- Freehold





SW5
LAVERTON MEWS
 £3,600,000

- 3 Bedrooms
- 2 Reception Rooms
- 3 Bathrooms
- 1838 sqft

- Roof Terrace
- Residents Parking
- Freehold

FOR SALE

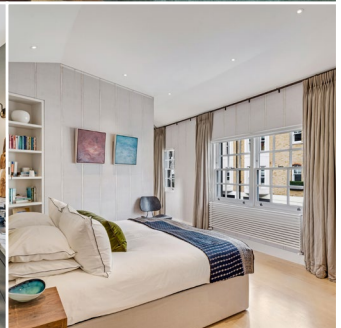
FOR SALE

SW1X

PONT STREET MEWS

£3,550,000

- 2 Bedrooms
- 2 Reception Rooms
- 2 Bathrooms
- 1560 sqft
- Patio
- Off-street Parking
- Freehold





W8
DRAYSON MEWS
 £3,000,000

- 2 Bedrooms
- 2 Reception Rooms
- 2 bathrooms
- 1477 sqft
- Balcony
- Garage
- Freehold

FOR SALE

FOR SALE

SW7

PETERSHAM PLACE

£2,800,000

- 3 Bedrooms
- 2 Reception Rooms
- 2 Bathrooms
- 1623 sqft
- Residents Parking
- Freehold





W1G
DUNSTABLE MEWS
 £2,450,000

- 2 Bedrooms
- 2 Reception Rooms
- 2 Bathrooms
- 1275 sqft
- Balcony
- Garage
- Leasehold

FOR SALE

FOR SALE

SW7

CRANLEY MEWS

£2,250,000

- 2 Bedrooms
- 2 Reception Rooms
- 2 bathrooms
- 1087 sqft
- Freehold





W11

ST. LUKES MEWS

Price on Application

- 3 Bedrooms



SW7

RADLEY MEWS

£7,000,000

- 12 Bedrooms



W1J

BRICK STREET

£5,000,000

- 3 Bedrooms



SW7

ELVASTON MEWS

£4,750,000

- 2 Bedrooms



SW7

STANHOPE MEWS EAST

£4,700,000

- 3 Bedrooms



W8

RADLEY MEWS

£4,500,000

- 8 Bedrooms



SW7

ENNISMORE MEWS

£4,000,000

- 4 Bedrooms



W2

HYDE PARK GARDENS

£4,000,000

- 4 Bedrooms



SW7

RUTLAND GATE MEWS

£3,250,000

- 3 Bedrooms

W2

**SUSSEX
MEWS WEST**

£3,250,000

5 Bedrooms •



W2

**HYDE PARK
GARDENS MEWS**

£3,000,000

3 Bedrooms •



W2

**ST. STEPHENS
MEWS**

£3,000,000

4 Bedrooms •



SW7

COLBECK MEWS

£2,995,000

3 Bedrooms •



SW10

**COLEHERNE
MEWS**

£2,750,000

4 Bedrooms •



W2

GARDEN MEWS

£2,750,000

3 Bedrooms •



W11

ADDISON PLACE

£2,650,000

1-2 Bedrooms •



W2

LEINSTER MEWS

£2,550,000

4-5 Bedrooms •



W9

PINDOCK MEWS

£2,500,000

1 Bedroom •





W2

PRINCES MEWS

£2,500,000

- 3 Bedrooms

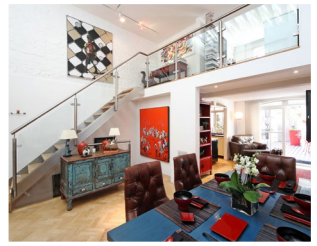


SW1X

BOWLAND YARD

£2,495,000

- 2 Bedrooms



SW7

BARNABY PLACE

£2,250,000

- 2 Bedrooms



W11

HOLLAND PARK MEWS

£2,200,000

- 2 Bedrooms



W2

LEINSTER MEWS

£2,200,000

- 3 Bedrooms



W2

LANCASTER MEWS

£2,100,000

- 2 Bedrooms



W11

LAMBTON PLACE

£2,000,000

- 3 Bedrooms



W2

SOUTHWICK MEWS

£2,000,000

- 4 Bedrooms

*Visit our website
for more detail on
all our properties*

LUROTBRAND.CO.UK

020 7590 9955

FOR SALE

W2

FREDERICK CLOSE

£1,800,000
Offers in Excess of

2 Bedrooms •



W14

**RUSSELL
GARDENS MEWS**

£1,750,000

5 Bedrooms •



NW3

MARYON MEWS

£1,250,000

2 Bedrooms •



SW1V

WEST MEWS

£1,250,000

2 Bedrooms •



SW7

**QUEENS GATE
MEWS**

£1,200,000

2 Bedrooms •



W9

**ELGIN MEWS
NORTH**

£1,050,000

1 Bedroom •



W14

**COMERAGH
MEWS**

£950,000

1 Bedroom •



NW1

MURRAY MEWS

£599,950

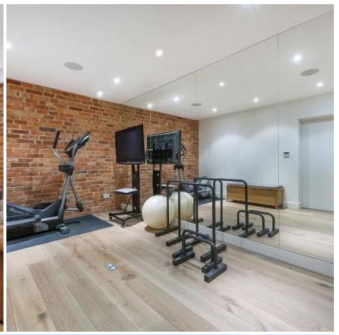
1 Bedroom •



LUROTBRAND.CO.UK

020 7590 9955

*Visit our website
for more detail on
all our properties*



W2

CLARENDON MEWS

£1,600 pw

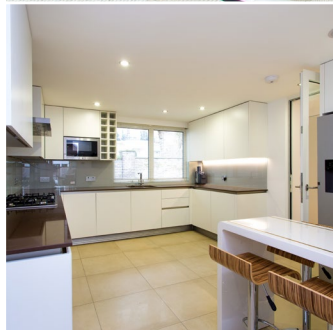
- 3 Bedrooms
- 2 Reception Rooms
- 2 Bathrooms
- 1435 sqft
- Long Let

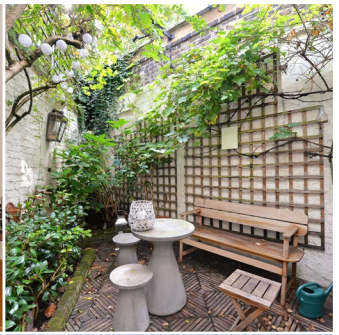
TO LET

TO LET

W2
TENNIEL CLOSE
£1,550 pw

- 4 Bedrooms
- 1 Reception Room
- 3 Bathrooms
- 1940 sqft
- Garden/Roof Terrace
- Furnished/Unfurnished
- Long Let





W11
PEMBRIDGE MEWS
 £1,350 pw

- 3 Bedrooms
- 1 Reception Room
- 2 Bathrooms

- 1160 sqft
- Unfurnished
- Long Let

TO LET

TO LET

SW7
RUTLAND STREET
£995 pw

- 2 Bedrooms
- 1 Reception Room
- 2 Bathrooms
- 800 sqft
- Patio
- Furnished/
Part Furnished
- Long Let





W2
**HYDE PARK
 GARDENS MEWS**
 £900 pw

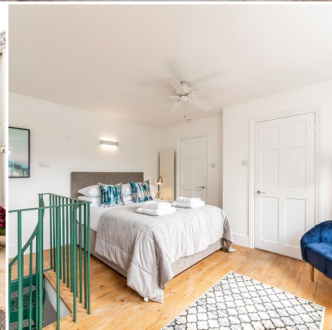
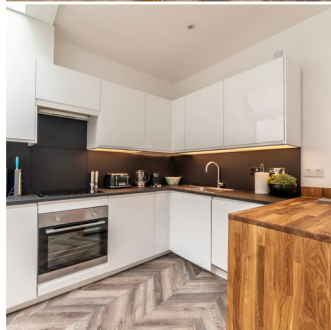
- 3 Bedrooms
- 1 Reception Room
- 2 Bathrooms
- Garage
- 1708 sqft
- Unfurnished

TO LET

SW5
KRAMER MEWS

£825 pw

- 2 Bedrooms
- 1 Reception Room
- 2 Bathrooms
- 1072 sqft
- Patio
- Furnished
- Long Let





SW5
WETHERBY MEWS
 £795 pw

- 3 Bedrooms
- 1 Reception Room
- 2 Bathrooms
- 1168 sqft

- Garage
- Unfurnished
- Long Let

TO LET

SW7

COLBECK MEWS

£1,950 pw

3 Bedrooms •



SW7

QUEENS GATE PLACE MEWS

£1,700 pw

5 Bedrooms •



W1D

DEAN STREET

£1,350 pw

3 Bedrooms •



SW7

PRINCES GATE MEWS

£1,350 pw

4 Bedrooms •



W2

SOUTHWICK MEWS

£1,250 pw

4 Bedrooms •



SW7

QUEENSBERRY MEWS WEST

£1,000 pw

2 Bedrooms •



W2

JUNCTION MEWS

£1,000 pw

3 Bedrooms •



W2

RADNOR MEWS

£850 pw

3 Bedrooms •



W2

GLOUCESTER MEWS

£850 pw

3 Bedrooms •





SW3

**BEAUCHAMP
PLACE**

£800 pw

• 2 Bedrooms



W2

**BATHURST
MEWS**

£795 pw

• 2 Bedrooms



W2

**CONNAUGHT
CLOSE**

£795 pw

• 2 Bedrooms



W8

LEXHAM MEWS

£750 pw

• 2 Bedrooms



W2

RADNOR PLACE

£495 pw

• 2 Bedrooms

*Visit our website
for more detail on
all our properties*

LUROTBRAND.CO.UK

020 7590 9955

W11 • £1,895 pw
LADBROKE WALK

4 Bedrooms •



SW7 • £1,400 pw
**QUEENS GATE
 PLACE MEWS**

• 3 Bedrooms



W8 • £1,000 pw
GORDON PLACE

2 Bedrooms •

W2 • £930 pw
BATHURST MEWS

• 3 Bedrooms



THE LAST WORD IN MEWS

LUROT BRAND

8 Ladbroke Grove, Notting Hill,
London W11 3BG

37-41 Sussex Place, Hyde Park,
London W2 2TH

4-5 Kynance Place, South Kensington,
London SW7 4QS

8a Baynes Mews, Belsize Park,
London NW3 5BH

020 7590 9955

WWW.LUROTBRAND.CO.UK



2020 Lurot Brand Ltd. No part of this publication may be reproduced without our consent. Produced by FOURLY.

Lurot Brand Limited | Registered in England No. 2682642 | Registered Office: 37-41 Sussex Place, London W2 2TH, United Kingdom

VAT no. 629 099 505 | T: 020 7479 1999 | F: 020 7479 1910

