



Ruston Mews, W11

LUROT BRAND

MEWS SPECIALISTS EST. 1971

020 7590 9955

lettings@lurotbrand.co.uk



First Floor

First Floor



Ruston Mews, W11

Furnished

£946 PW

A wonderful three double bedroom mews house in a sought-after location.

The ground floor offers a double bedroom and bathroom. On the first floor is a dual aspect open plan kitchen and living room with access to a balcony at the front of the property and on the top floor is a second bathroom and two further double bedrooms one with access to a second balcony with views down the mews.

LOCATION

Ruston Mews is located just off St Marks Road and is minutes from Ladbroke Grove tube Station. It is also a short walk to both Portobello Road & Westbourne Grove plus the fantastic array of restaurants, shops, cafe's & bars of Notting Hill.



First Floor

Second Floor





Second Floor

FEATURES

Three Bedrooms	Gated Mews
Two Bathrooms	
Two Balconies	
Wood Floors	

OTHER USEFUL INFORMATION

EPC	E
Council Tax Band	E
Deposit Amount	£4,730.00

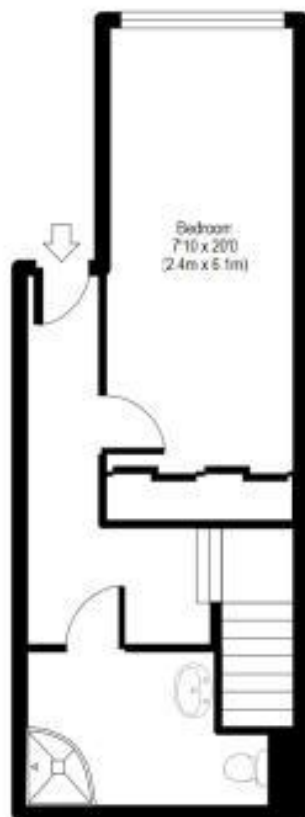
NEAREST TUBE STATIONS

Ladbroke Grove (Circle Line and Hammersmith & City Line)

Ruston Mews

APPROX GROSS INTERNAL FLOOR AREA 1021.34 sq. ft / 94.92 sq. m

(CH = Ceiling Heights)



Ground Floor



First Floor



Second Floor

"Whilst every attempt has been made to ensure accuracy of the floor plan contained here, all measurements are to be considered approximate and no responsibility is taken for any error or mis-statement. This plan is for illustrative purposes only, and should be treated as such by any prospective purchaser."

Hyde Park
37-41 Sussex Place, Hyde Park,
London W2 2TH

South Kensington
4-5 Kynance Place, South Kensington,
London SW7 4QS

WWW.LUROTBRAND.CO.UK



Members of NAEA, ARLA, onthemarket.com. Lurot Brand (2) Limited T/A Lurot Brand. Registered in England No. 02035540. Registered Office: 37-41 Sussex Place, London, W2 2TH. VAT No. 629 099 505.
www.lurotbrand.co.uk

We have produced these sales particulars as a general guide. We have not carried out a detailed survey of the property and have not tested the services, appliances, or specific fittings. Room sizes are for general guidance purposes and should not be relied upon for fitting carpets or furnishings. Pictures may have been digitally enhanced. Floor plans are not to scale. Fittings shown on floor plans may not match the actual layout or size of fittings at the property. None of the statements as to the property contained in these particulars are to be relied upon as statements or representations of fact. All statements in these particulars as to this property are made without responsibility on the part of Lurot Brand. The Seller does not make or give and neither Lurot Brand or any person in their employment has any authority to make or give any representation or warranty whatever in relation to this property.