



Archery Close, W2

LUROT BRAND

MEWS SPECIALISTS EST. 1971

020 7590 9955

lettings@lurotbrand.co.uk



Ground Floor

Lower Ground



Archery Close, W2

Unfurnished

£923.07 PW

A quaint two double bedroom mews house located in the heart of Connaught Village.

The mews house comprises of a generous double aspect living room on the ground floor. There is a large eat in kitchen which leads to a small private patio. The first floor has a good sized double bedroom and family bathroom and the top floor offers a large master bedroom with built in storage and en-suite bathroom.

LOCATION

Tucked away in the heart of the Connaught village, Archery Close is perfectly located for the enthusiastic shopper, with Oxford Street just minutes away.



Second Floor

First Floor





Second Floor

First Floor



FEATURES

Two Bedrooms

Patio

Two Bathrooms

Connaught Village

Large Eat-in Kitchen

Reception Room

OTHER USEFUL INFORMATION

EPC

E

Council Tax Band

G

Deposit Amount

£4,615.35

NEAREST TUBE STATIONS

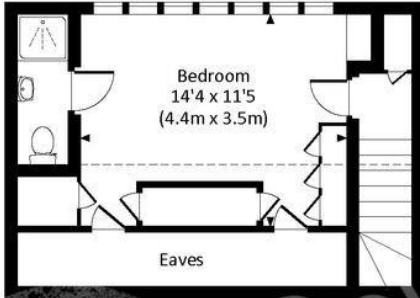
Marble Arch (Central line) & Paddington (District, Circle,

Hammersmith & City, Bakerloo & National Rail)

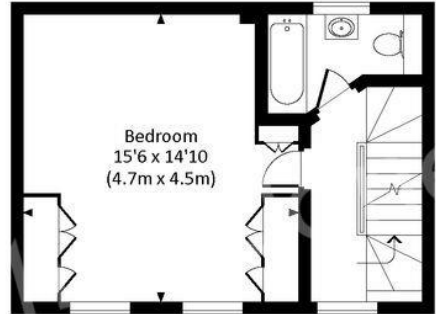
ARCHERY CLOSE, W2

Approx. gross internal area 1112 Sq Ft. / 103.3 Sq M.

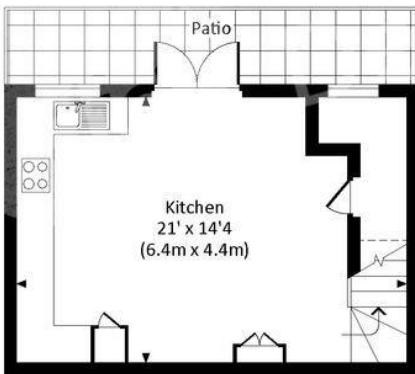
Approx. gross internal area 1252 Sq Ft. / 116.3 Sq M. Inc. Restricted Height



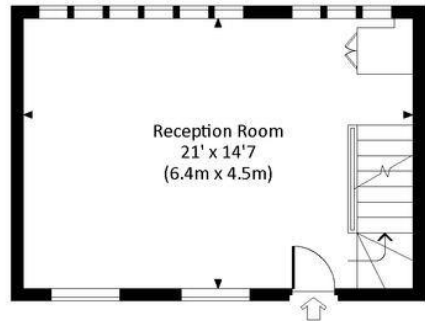
SECOND FLOOR



FIRST FLOOR



LOWER GROUND FLOOR



GROUND FLOOR



Notting Hill
8 Ladbroke Grove, Notting Hill,
London W11 3BG

Hyde Park
37-41 Sussex Place, Hyde Park,
London W2 2TH

South Kensington
4-5 Kynance Place, South Kensington,
London SW7 4QS

WWW.LUROTBRAND.CO.UK



Members of NAEA, ARLA, onthemarket.com. Lurot Brand (2) Limited T/A Lurot Brand. Registered in England No. 02035540. Registered Office: 37-41 Sussex Place, London, W2 2TH. VAT No. 629 099 505. www.lurotbrand.co.uk

We have produced these sales particulars as a general guide. We have not carried out a detailed survey of the property and have not tested the services, appliances, or specific fittings. Room sizes are for general guidance purposes and should not be relied upon for fitting carpets or furnishings. Pictures may have been digitally enhanced. Floor plans are not to scale. Fittings shown on floor plans may not match the actual layout or size of fittings at the property. None of the statements as to the property contained in these particulars are to be relied upon as statements or representations of fact. All statements in these particulars as to this property are made without responsibility on the part of Lurot Brand. The Seller does not make or give and neither Lurot Brand or any person in their employment has any authority to make or give any representation or warranty whatever in relation to this property.