



Archery Close, W2

LUROT BRAND

MEWS SPECIALISTS EST. 1971

020 7590 9955
lettings@lurotbrand.co.uk



Exterior

Lower Ground Floor



Archery Close, W2

Unfurnished

£980 PW

A quaint two double bedroom mews house located in the heart of Connaught Village.

The mews house comprising a generous dual aspect living room on the ground floor and a large eat in kitchen which leads to a small private patio on the lower ground floor. The first floor has a good sized double bedroom and family bathroom and the top floor offers a large master bedroom with built in storage and en-suite bathroom.

LOCATION

Tucked away in the heart of the Connaught village, Archery Close is perfectly located for the enthusiastic shopper, with Oxford Street just minutes away.



First Floor

Ground Floor





Lower Ground

Second Floor



FEATURES

Two Bedrooms	Patio
Two Bathrooms	Connaught Village
Large Eat-in Kitchen	
Reception Room	

OTHER USEFUL INFORMATION

EPC	E
Council Tax Band	G
Deposit Amount	£5,880.00

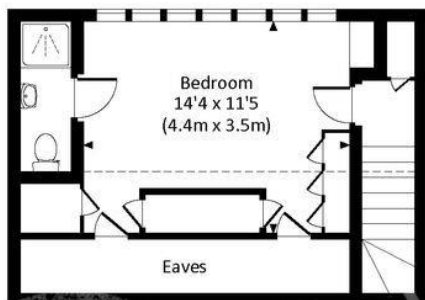
NEAREST TUBE STATIONS

Marble Arch (Central line) & Paddington (District, Circle, Hammersmith & City, Bakerloo & National Rail)

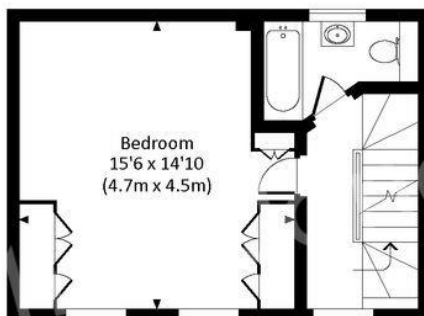
ARCHERY CLOSE, W2

Approx. gross internal area 1112 Sq Ft. / 103.3 Sq M.

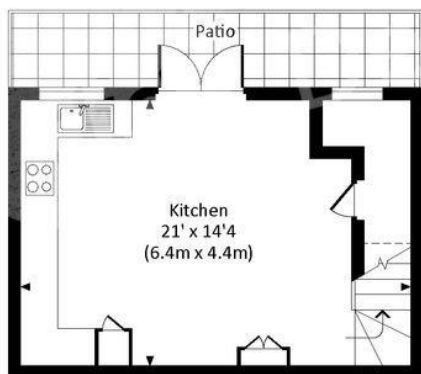
Approx. gross internal area 1252 Sq Ft. / 116.3 Sq M. Inc. Restricted Height



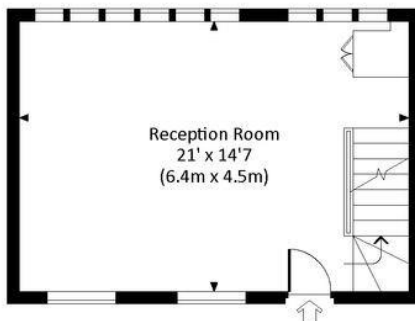
SECOND FLOOR



FIRST FLOOR



LOWER GROUND FLOOR



GROUND FLOOR



All measurements have been made in accordance with RICS Code of Measuring Practice which are approximate only and only for illustrative purposes. For the avoidance of doubt, Dowling Jones Design shall not be liable for any reliance on these measurements. © 2019 www.dowlingjones.com 020 7610 9933

Hyde Park
37-41 Sussex Place, Hyde Park,
London W2 2TH

South Kensington
4-5 Kynance Place, South Kensington,
London SW7 4QS

WWW.LUROTBRAND.CO.UK



Members of NAEA, ARLA, onthemarket.com. Lurot Brand (2) Limited T/A Lurot Brand. Registered in England No. 02035540. Registered Office: 37-41 Sussex Place, London, W2 2TH. VAT No. 629 099 505. www.lurotbrand.co.uk

We have produced these sales particulars as a general guide. We have not carried out a detailed survey of the property and have not tested the services, appliances, or specific fittings. Room sizes are for general guidance purposes and should not be relied upon for fitting carpets or furnishings. Pictures may have been digitally enhanced. Floor plans are not to scale. Fittings shown on floor plans may not match the actual layout or size of fittings at the property. None of the statements as to the property contained in these particulars are to be relied upon as statements or representations of fact. All statements in these particulars as to this property are made without responsibility on the part of Lurot Brand. The Seller does not make or give and neither Lurot Brand or any person in their employment has any authority to make or give any representation or warranty whatever in relation to this property.