

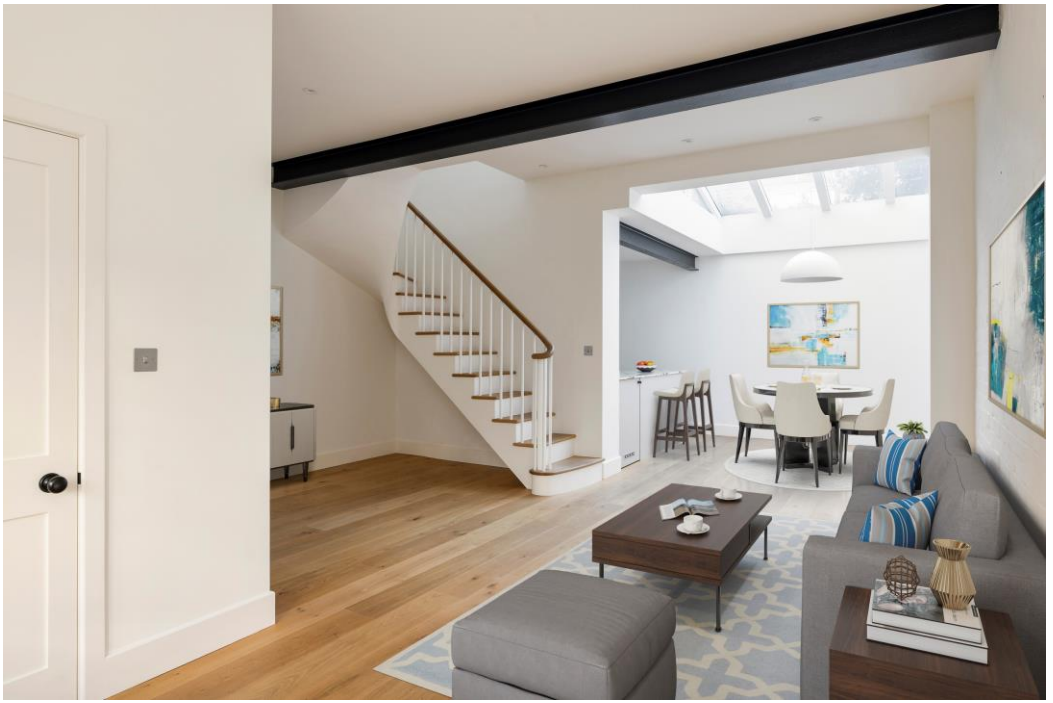


Pembridge Mews, W11

LUROT BRAND

MEWS SPECIALISTS EST. 1971

020 7590 9955
lettings@lurotbrand.co.uk



Ground Floor

Ground Floor



Pembridge Mews, W11

Unfurnished

£1,095 PW

A beautiful two bedroom house located in the heart of Notting Hill.

This desirable house is situated on one of Notting Hills most sought after Mews Streets. The recently refurbished property offers open plan living, kitchen and dining with an addition of a beautiful Skylight to boosts the properties natural light.

The first floor comprises of two double bedrooms, with built in storage and separate beautifully designed bathroom.

There is also the addition of a roof terrace.

LOCATION

Pembridge Mews is one of the most beautiful mews in London, yet despite the tranquillity is right in the heart of Notting Hill. It is ideally located being almost equidistant from Westbourne Grove with its cafes, restaurants, boutiques and Notting Hill Gate with its amenities and transport links.



Ground Floor

First Floor





First Floor

First Floor



FEATURES

Roof Terrace

Two Bedrooms

Amazing Location

OTHER USEFUL INFORMATION

EPC

To be confirmed

Council Tax Band

G

Deposit Amount

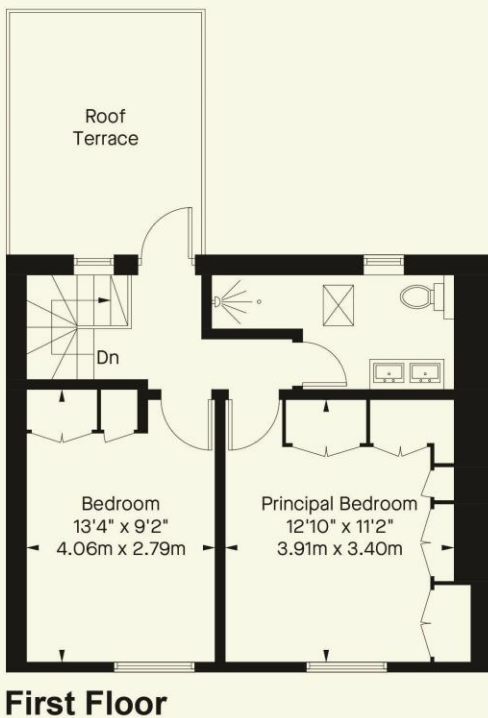
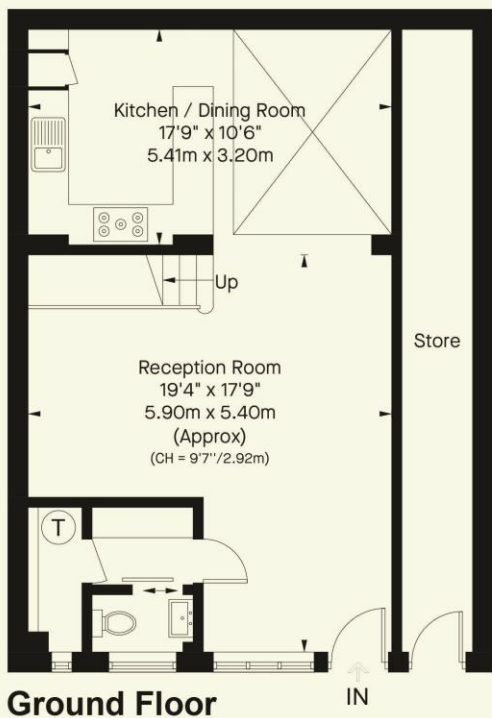
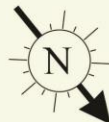
£6,570

NEAREST TUBE STATIONS

Notting Hill Gate (Central, District and Circle lines)

Pembridge Mews, W11

Approximate Gross Internal Area
1070 FT² - 99.4 M²
(Including Store)



Notting Hill
8 Ladbroke Grove, Notting Hill,
London W11 3BG

Hyde Park
37-41 Sussex Place, Hyde Park,
London W2 2TH

South Kensington
4-5 Kynance Place, South Kensington,
London SW7 4QS

WWW.LUROTBRAND.CO.UK



Members of NAEA, ARLA, onthemarket.com. Lurot Brand (2) Limited T/A Lurot Brand. Registered in England No. 02035540. Registered Office: 37-41 Sussex Place, London, W2 2TH. VAT No. 629 099 505. www.lurotbrand.co.uk

N.B. This company name will change back to Lurot Brand Limited within the next 6 months. We have produced these sales particulars as a general guide. We have not carried out a detailed survey of the property and have not tested the services, appliances, or specific fittings. Room sizes are for general guidance purposes and should not be relied upon for fitting carpets or furnishings. Pictures may have been digitally enhanced. Floor plans are not to scale. Fittings shown on floor plans may not match the actual layout or size of fittings at the property. None of the statements as to the property contained in these particulars are to be relied upon as statements or representations of fact. All statements in these particulars as to this property are made without responsibility on the part of Lurot Brand. The Seller does not make or give and neither Lurot Brand or any person in their employment has any authority to make or give any representation or warranty whatever in relation to this property.