



Rede Place, W2

**LUROT BRAND**

MEWS SPECIALISTS EST. 1971

020 7590 9955

[lettings@lurotbrand.co.uk](mailto:lettings@lurotbrand.co.uk)



First Floor

First Floor



# Rede Place, W2

Unfurnished

£750 PW

---

A wonderfully bright two-bedroom mews maisonette, located a stone's throw away from Westbourne Grove.

The property offers two bedrooms, a good-sized living area, a fully fitted kitchen, a bathroom, and ample storage throughout.

## LOCATION

Rede Place is found off Chepstow Place, moments from the convenience of Westbourne Grove and close to the chic boutiques of Ledbury Road. Kensington Gardens is also a short walk away.



First Floor

---

First Floor





First Floor

Exterior



## FEATURES

Reception/Dining Room

---

Second Bedroom

---

Separate Kitchen

---

Family Bathroom

---

Double Bedroom

---

## OTHER USEFUL INFORMATION

EPC

---

E

Council Tax Band

---

F

Deposit Amount

---

£3,750.00

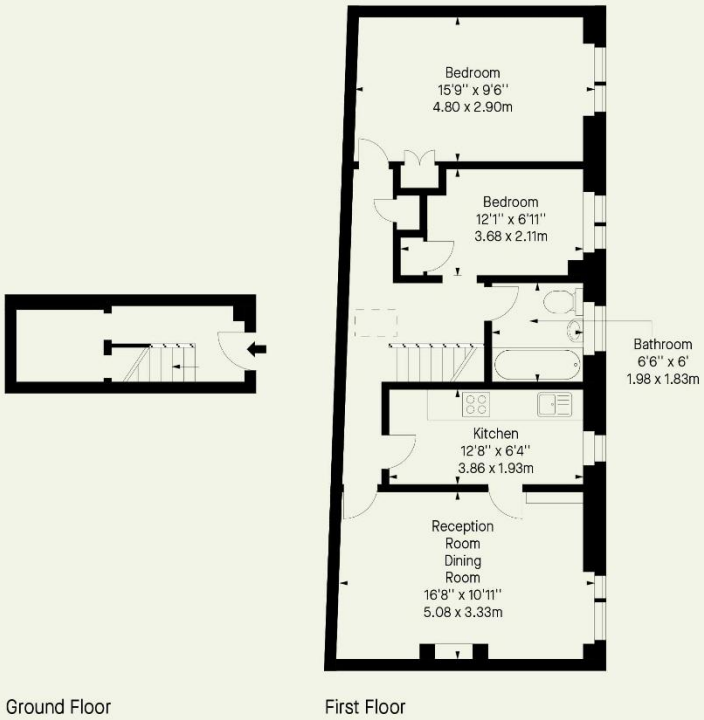
---

## NEAREST TUBE STATIONS

Bayswater (Circle and District lines) and Queensway (Central line)

---

Rede Place,  
Approx. Gross Internal Area \*  
735 Ft<sup>2</sup> - 68.28 M<sup>2</sup>



Hyde Park  
37-41 Sussex Place, Hyde Park,  
London W2 2TH

South Kensington  
4-5 Kynance Place, South Kensington,  
London SW7 4QS

[WWW.LUROTBRAND.CO.UK](http://WWW.LUROTBRAND.CO.UK)



Members of NAEA, ARLA, onthemarket.com. Lurot Brand (2) Limited T/A Lurot Brand. Registered in England No. 02035540. Registered Office: 37-41 Sussex Place, London, W2 2TH. VAT No. 629 099 505. [www.lurotbrand.co.uk](http://www.lurotbrand.co.uk)

We have produced these sales particulars as a general guide. We have not carried out a detailed survey of the property and have not tested the services, appliances, or specific fittings. Room sizes are for general guidance purposes and should not be relied upon for fitting carpets or furnishings. Pictures may have been digitally enhanced. Floor plans are not to scale. Fittings shown on floor plans may not match the actual layout or size of fittings at the property. None of the statements as to the property contained in these particulars are to be relied upon as statements or representations of fact. Any reference to alterations to, or use of, any part of the property does not mean that any necessary planning, building regulations or other consent has been obtained. A buyer or lessee must find out by inspection or in other ways that these matters have been properly dealt with and that all information is correct.

All statements in these particulars as to this property are made without responsibility on the part of Lurot Brand. The Seller does not make or give, and neither Lurot Brand nor any person in their employment has any authority to make or give any representation or warranty whatever in relation to this property.