



Burton Mews, SW1W

LUROT BRAND

MEWS SPECIALISTS EST. 1971

020 7590 9955
lettings@lurotbrand.co.uk



Ground Floor

Ground Floor



Burton Mews, SW1W

Unfurnished

£1,650 PW

A superbly stylish brand newly refurbished two double bedroom mews house situated in the heart of Belgravia.

The ground floor comprises of a bright living space with feature fireplace and eat in kitchen with sliding doors onto a private patio. The upper floor boasts two double bedrooms, both with en-suite bathrooms and fitted wardrobes. There is also a parking space outside of the house.

Long let

Council tax band G

LOCATION

Burton Mews has been hailed as one of the most peaceful streets in prime central London, moments from Sloane Square and Belgravia.



Ground Floor

First Floor





Ground Floor

Ground Floor



FEATURES

2 Bedrooms

Cul-de-Sac Mews

2 Bathrooms

Patio

Modern

OTHER USEFUL INFORMATION

EPC

D

Council Tax Band

G

Deposit Amount

£9,900.00

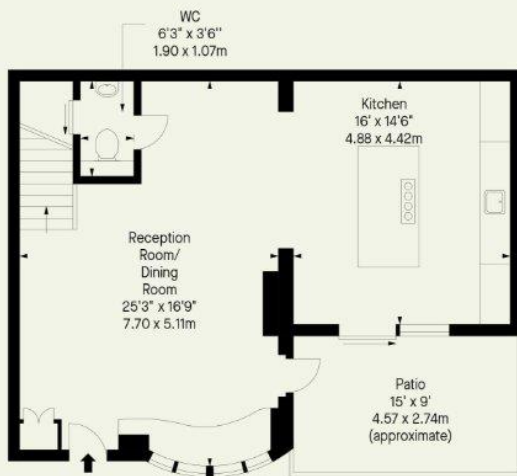
NEAREST TUBE STATIONS

Sloane Square (Circle and District lines)

Burton Mews
Approx. Gross Internal Area *
1296 Ft² - 120.40 M²



First Floor



Ground Floor

Whilst every attempt has been made to ensure the accuracy of the floor plan contained here, measurements of doors, windows, rooms and any other item are approximate and no responsibility is taken for any error, omission, or misstatement. Please check all dimensions before making a decision reliant upon them.

Notting Hill
8 Ladbroke Grove, Notting Hill,
London W11 3BG

Hyde Park
37-41 Sussex Place, Hyde Park,
London W2 2TH

South Kensington
4-5 Kynance Place, South Kensington,
London SW7 4QS

WWW.LUROTBRAND.CO.UK



Members of NAEA, ARLA, onthemarket.com. Lurot Brand (2) Limited T/A Lurot Brand. Registered in England No. 02035540. Registered Office: 37-41 Sussex Place, London, W2 2TH. VAT No. 629 099 505. www.lurotbrand.co.uk

We have produced these sales particulars as a general guide. We have not carried out a detailed survey of the property and have not tested the services, appliances, or specific fittings. Room sizes are for general guidance purposes and should not be relied upon for fitting carpets or furnishings. Pictures may have been digitally enhanced. Floor plans are not to scale. Fittings shown on floor plans may not match the actual layout or size of fittings at the property. None of the statements as to the property contained in these particulars are to be relied upon as statements or representations of fact. All statements in these particulars as to this property are made without responsibility on the part of Lurot Brand. The Seller does not make or give and neither Lurot Brand or any person in their employment has any authority to make or give any representation or warranty whatever in relation to this property.