



# Coleherne Mews, SW10

**LUROT BRAND**

MEWS SPECIALISTS EST. 1971

020 7590 9955  
sales@lurotbrand.co.uk



First Floor

First Floor



# Coleherne Mews, SW10

Freehold

£2,850,000 STC

---

A fantastic four-bedroom mews house with a beautiful and impressive first-floor, open-plan kitchen, dining and reception room.

The property benefits from lots of lateral space, plenty of natural light and presents in beautiful condition, making it perfect for anyone looking to move straight in.

## LOCATION

Coleherne Mews is located just off Redcliffe Square, close to the Old Brompton Road. Besides the excellent amenities of both the Fulham Road and Earls Court areas, the property will further benefit from the extensive gentrification of Earls Court that is currently underway.



First Floor

Second Floor





Ground Floor

Second Floor



## FEATURES

Kitchen/Dining/Reception

---

Three Bathrooms

---

Four Bedrooms

---

Utility

---

Entrance Hall

---

Garage

---

## OTHER USEFUL INFORMATION

EPC

---

C

Council Tax Band

---

H

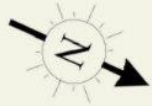
## NEAREST TUBE STATIONS


Earls Court (Circle, District, Piccadilly, Hammersmith and City lines)

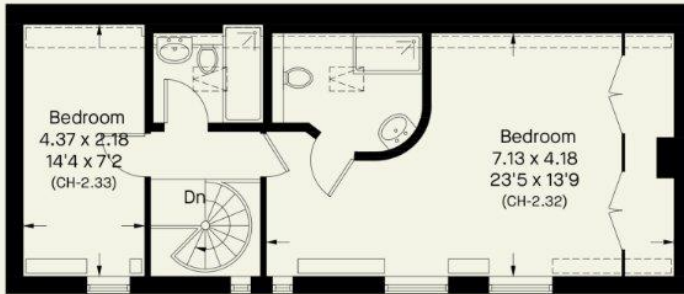
---

# Coleherne Mews, SW10

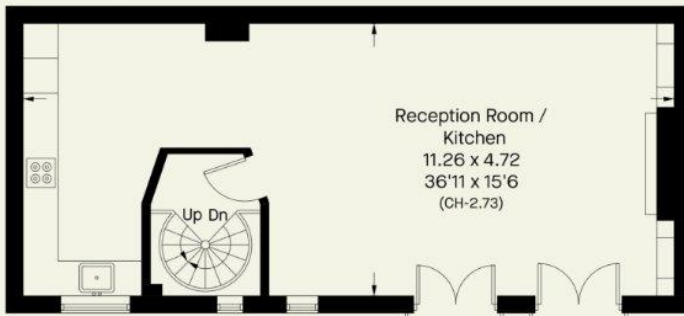
Approximate Area = 162.4 sq m / 1748 sq ft (Including Garage)  
Including Limited Use Area (5.4 sq m / 58 sq ft)



 = Reduce head height below 1.5m



Second Floor



First Floor



Ground Floor

Whilst every attempt has been made to ensure the accuracy of the floor plan contained here, measurements of doors, windows, rooms and any other item are approximate and no responsibility is taken for any error, omission, or misstatement. Please check all dimensions before making a decision reliant upon them.

Notting Hill  
8 Ladbrooke Grove, Notting Hill,  
London W11 3BG

Hyde Park  
37-41 Sussex Place, Hyde Park,  
London W2 2TH

South Kensington  
4-5 Kynance Place, South Kensington,  
London SW7 4QS

[WWW.LUROTBRAND.CO.UK](http://WWW.LUROTBRAND.CO.UK)



Members of NAEA, ARLA, onthemarket.com. Lurot Brand (2) Limited T/A Lurot Brand. Registered in England No. 02035540. Registered Office: 37-41 Sussex Place, London, W2 2TH. VAT No. 629 099 505. [www.lurotbrand.co.uk](http://www.lurotbrand.co.uk)

---

We have produced these sales particulars as a general guide. We have not carried out a detailed survey of the property and have not tested the services, appliances, or specific fittings. Room sizes are for general guidance purposes and should not be relied upon for fitting carpets or furnishings. Pictures may have been digitally enhanced. Floor plans are not to scale. Fittings shown on floor plans may not match the actual layout or size of fittings at the property. None of the statements as to the property contained in these particulars are to be relied upon as statements or representations of fact. All statements in these particulars as to this property are made without responsibility on the part of Lurot Brand. The Seller does not make or give and neither Lurot Brand or any person in their employment has any authority to make or give any representation or warranty whatever in relation to this property.