



Upbrook Mews, W2

LUROT BRAND

MEWS SPECIALISTS EST. 1971

020 7590 9955
lettings@lurotbrand.co.uk



Main Bedroom

Exterior



Upbrook Mews, W2

Unfurnished

£700 PW

A two-bedroom mews house to rent in a charming mews street located close to the green open spaces of Hyde Park.

This delightful house benefits from a large eat in modern kitchen, separate first floor sitting room, two bedrooms with built in storage and two en-suite bathrooms. The property also offers a small balcony.

LOCATION

Upbrook Mews lies off Craven Road and is ideally situated for the shops, restaurants and transport facilities of Paddington and Lancaster Gate. Kensington Gardens is a short walk away.



Eat-In Kitchen

Second Bedroom





En Suite Shower Room

Balcony



FEATURES

Two Bedrooms

Two Bathrooms

Balcony

Eat-In Kitchen

OTHER USEFUL INFORMATION

EPC D

Council Tax Band F

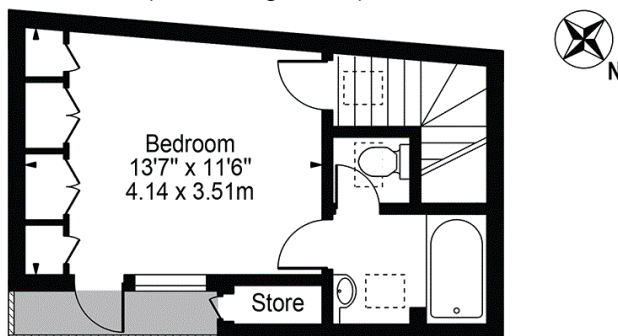
Deposit Amount £3,500.00

NEAREST TUBE STATIONS

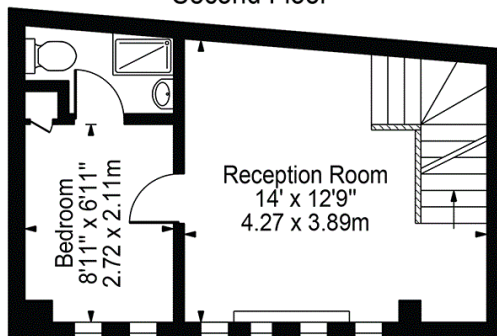
Paddington (Hammersmith & City, Circle, District, Bakerloo
lines)

Upbrook Mews

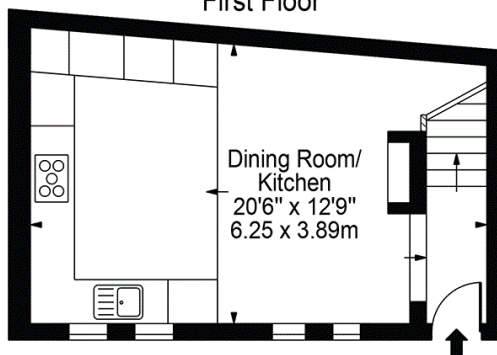
Approx. Gross Internal Area 792 Sq Ft - 73.58 Sq M
(Excluding Store)



Second Floor



First Floor



Ground Floor

For Illustration Purposes Only - Not To Scale

This floor plan should be used as a general outline for guidance only and does not constitute in whole or in part an offer or contract. Any intending purchaser or lessee should satisfy themselves by inspection, searches, enquiries and full survey as to the correctness of each statement. Any areas, measurements or distances quoted are approximate and should not be used to value a property or be the basis of any sale or let.

Notting Hill
8 Ladbroke Grove, Notting Hill,
London W11 3BG

Hyde Park
37-41 Sussex Place, Hyde Park,
London W2 2TH

South Kensington
4-5 Kynance Place, South Kensington,
London SW7 4QS

WWW.LUROTBRAND.CO.UK



Members of NAEA, ARLA, onthemarket.com. Lurot Brand (2) Limited T/A Lurot Brand. Registered in England No. 02035540. Registered Office: 37-41 Sussex Place, London, W2 2TH. VAT No. 629 099 505. www.lurotbrand.co.uk

We have produced these sales particulars as a general guide. We have not carried out a detailed survey of the property and have not tested the services, appliances, or specific fittings. Room sizes are for general guidance purposes and should not be relied upon for fitting carpets or furnishings. Pictures may have been digitally enhanced. Floor plans are not to scale. Fittings shown on floor plans may not match the actual layout or size of fittings at the property. None of the statements as to the property contained in these particulars are to be relied upon as statements or representations of fact. All statements in these particulars as to this property are made without responsibility on the part of Lurot Brand. The Seller does not make or give and neither Lurot Brand or any person in their employment has any authority to make or give any representation or warranty whatever in relation to this property.