



# Hyde Park Gardens Mews, W2

**LUROT BRAND**

MEWS SPECIALISTS EST. 1971

020 7590 9955  
sales@lurotbrand.co.uk



Ground Floor

First Floor



# Hyde Park Gardens Mews, W2

Freehold

£2,500,000 STC

---

A charming south-facing three bedroom mews property set within the picturesque Hyde Park Gardens Mews.

On the ground floor is the spacious living room leading to a large kitchen and dining area. On the first floor, we find a guest bathroom, and the large principal bedroom with ensuite. The second-floor hosts two further bedrooms and a separate bathroom. The ceiling height throughout the property is immediately noticeable. It also benefits from windows at the rear, which is atypical for most mews properties, and an integral garage.

## LOCATION

Hyde Park Gardens Mews is emblematic of what mews living is all about; colourful, quiet, picturesque with a real sense of community and charm.



Ground Floor

Ground Floor





Street

External



## FEATURES

Kitchen/Dining Room

---

Ensuite Bathroom

---

Reception Room

---

Two Family Bathrooms

---

Three Bedrooms

---

Garage

---

## OTHER USEFUL INFORMATION

EPC

---

D

Council Tax Band

---

G

## NEAREST TUBE STATIONS

Lancaster Gate (Central Line) & Paddington Station (District,  
Circle, Bakerloo, Mainline Services)

---

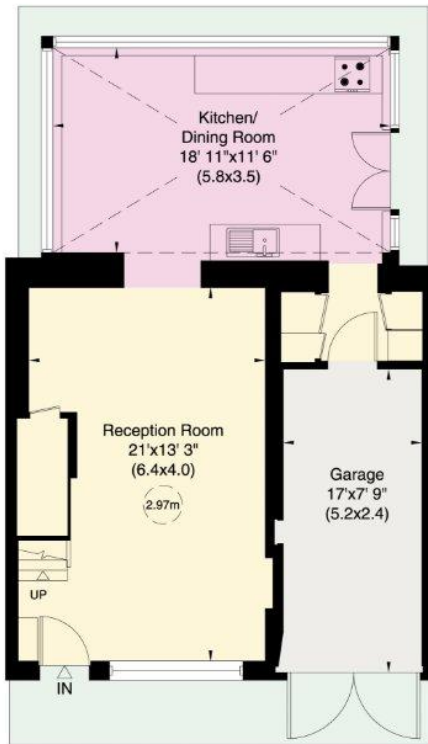
# Hyde Park Gardens Mews, W2

Approximate Gross Internal Area

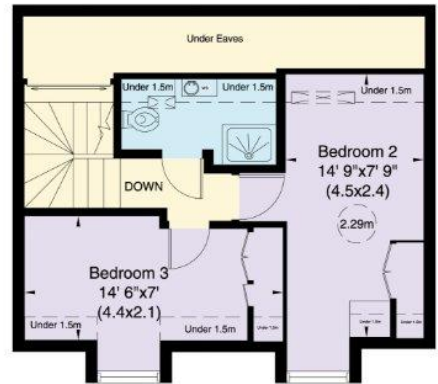
151 sq m (1629 sq ft) Including Under Eaves and Under 1.5m

140 sq m (1508 sq ft) Excluding Under Eaves and Under 1.5m

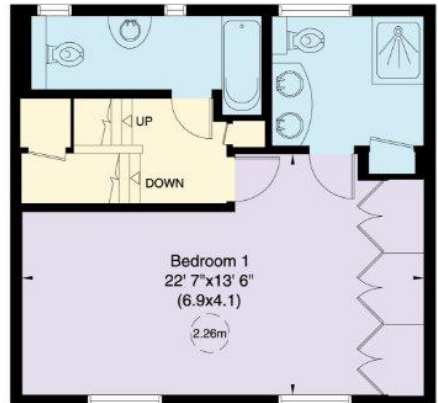
Not to Scale, for identification only



Ground Floor



Second Floor



First Floor

For guidance only and must not be relied upon as a statement of fact.  
All measurements and areas are approximate only (and have been prepared in accordance with the current edition of the RICS Code of Measuring Practice).



Hyde Park  
37-41 Sussex Place, Hyde Park,  
London W2 2TH

South Kensington  
4-5 Kynance Place, South Kensington,  
London SW7 4QS

[WWW.LUROTBRAND.CO.UK](http://WWW.LUROTBRAND.CO.UK)



Members of NAEA, ARLA, onthemarket.com. Lurot Brand (2) Limited T/A Lurot Brand. Registered in England No. 02035540. Registered Office: 37-41 Sussex Place, London, W2 2TH. VAT No. 629 099 505. [www.lurotbrand.co.uk](http://www.lurotbrand.co.uk)

We have produced these sales particulars as a general guide. We have not carried out a detailed survey of the property and have not tested the services, appliances, or specific fittings. Room sizes are for general guidance purposes and should not be relied upon for fitting carpets or furnishings. Pictures may have been digitally enhanced. Floor plans are not to scale. Fittings shown on floor plans may not match the actual layout or size of fittings at the property. None of the statements as to the property contained in these particulars are to be relied upon as statements or representations of fact. Any reference to alterations to, or use of, any part of the property does not mean that any necessary planning, building regulations or other consent has been obtained. A buyer or lessee must find out by inspection or in other ways that these matters have been properly dealt with and that all information is correct.

All statements in these particulars as to this property are made without responsibility on the part of Lurot Brand. The Seller does not make or give and neither Lurot Brand or any person in their employment has any authority to make or give any representation or warranty whatever in relation to this property.