



# Lancaster Mews, W2

**LUROT BRAND**

MEWS SPECIALISTS EST. 1971

020 7590 9955  
sales@lurotbrand.co.uk



First Floor

First Floor



# Lancaster Mews, W2

Freehold

£3,950,000 STC

---

An outstanding mews house of over 2,800 square feet with far reaching views down the mews.

This lovely house offers a huge amount of accommodation across three floors. Once a mini cooper workshop, the owner refurbished the house to a high standard creating a wonderful first floor living room, dining room and kitchen. The living room enjoys open views looking down the mews. There are two large bedroom suites on the second floor both of which have private balconies. Finally, the ground floor is currently configured as a studio space with kitchen and shower room, this is flexible space that an incoming purchaser could use in multiple ways such as parking for multiple cars or a studio space.

## LOCATION

Lancaster Mews is a beautiful, cobbled mews perfectly located to enjoy all the amenities of Bayswater and Hyde Park. There are multiple shops, bars and restaurants nearby with Kensington Gardens and Hyde Park only a two-minute walk away. There are also great transport facilities from Lancaster Gate and Paddington Station.





First Floor

Second Floor





Second Floor

Ground Floor



## FEATURES

Separate Studio Apartment

---

Reception Room

---

Three Bedrooms

---

Dining Room

---

Three En Suite Bathrooms

---

Kitchen

---

Shower Room

---

Two Balconies

---

## OTHER USEFUL INFORMATION

EPC

---

D

Council Tax Band

---

H

## NEAREST TUBE STATIONS

Lancaster Gate (Central line)

---

---

# Lancaster Mews, W2

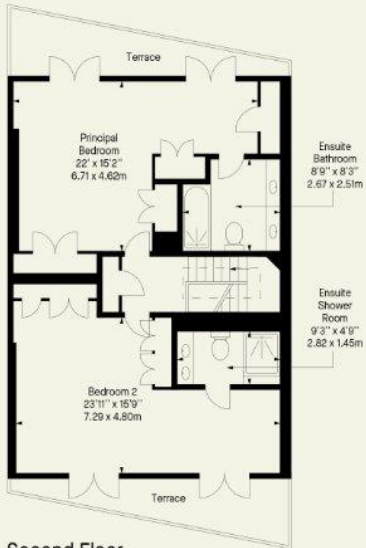
Approx. Gross Internal Area \*

2848 Ft<sup>2</sup> - 264.58 M<sup>2</sup>

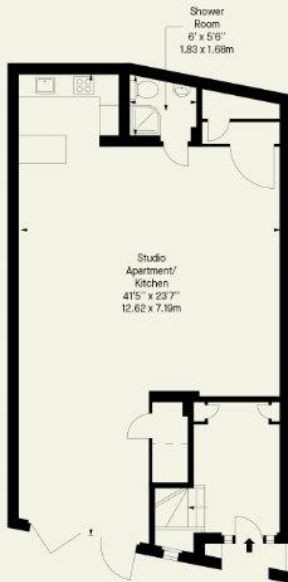
Approx. Gross Internal Area \*

3029 Ft<sup>2</sup> - 281.39 M<sup>2</sup>

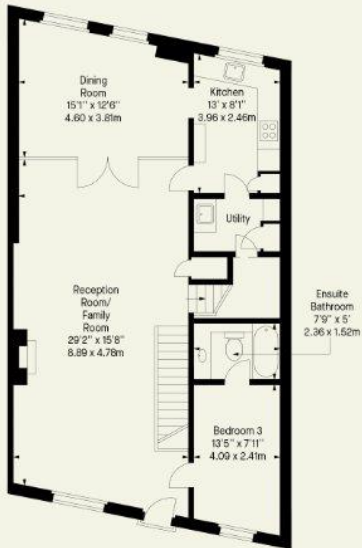
(Including Terraces)



Second Floor



Ground Floor



First Floor

Whilst every attempt has been made to ensure the accuracy of the floor plan contained here, measurements of doors, windows, rooms and any other item are approximate and no responsibility is taken for any error, omission, or misstatement. Please check all dimensions before making a decision reliant upon them.

This plan is for guidance only and must not be relied upon as a statement of fact. Attention is drawn to the important notice on the last page of the text of the particulars.

Notting Hill  
8 Ladbroke Grove, Notting Hill,  
London W11 3BG

Hyde Park  
37-41 Sussex Place, Hyde Park,  
London W2 2TH

South Kensington  
4-5 Kynance Place, South Kensington,  
London SW7 4QS

**WWW.LUROTBRAND.CO.UK**



Members of NAEA, ARLA, onthemarket.com. Lurot Brand (2) Limited T/A Lurot Brand. Registered in England No. 02035540. Registered Office: 37-41 Sussex Place, London, W2 2TH. VAT No. 629 099 505. [www.lurotbrand.co.uk](http://www.lurotbrand.co.uk)

We have produced these sales particulars as a general guide. We have not carried out a detailed survey of the property and have not tested the services, appliances, or specific fittings. Room sizes are for general guidance purposes and should not be relied upon for fitting carpets or furnishings. Pictures may have been digitally enhanced. Floor plans are not to scale. Fittings shown on floor plans may not match the actual layout or size of fittings at the property. None of the statements as to the property contained in these particulars are to be relied upon as statements or representations of fact. Any reference to alterations to, or use of, any part of the property does not mean that any necessary planning, building regulations or other consent has been obtained. A buyer or lessee must find out by inspection or in other ways that these matters have been properly dealt with and that all information is correct.

All statements in these particulars as to this property are made without responsibility on the part of Lurot Brand. The Seller does not make or give and neither Lurot Brand or any person in their employment has any authority to make or give any representation or warranty whatever in relation to this property.