



# West Mews, SW1V

**LUROT BRAND**

MEWS SPECIALISTS EST. 1971

020 7590 9955  
[sales@lurotbrand.co.uk](mailto:sales@lurotbrand.co.uk)



Ground Floor

Ground Floor



# West Mews, SW1V

Leasehold Approx. 957 years and 6 months  
(Exp. Dec 2983)

£1,250,000 STC

---

A recently refurbished,  
modernised two-bedroom mews  
right in the heart of the Pimlico  
Grid.

This mews is perfectly positioned for a Central London Pied-a-Terre, with private parking, two double bedrooms with built-in storage and ample entertaining space.

## LOCATION

Sandwiched equal distances between Pimlico's Prime Garden Squares, West Mews is ideally located for all the convenience of Victoria and Warwick Way's restaurants and shops, while being only moments' walk away from Elizabeth Street and Sloane Square.

The photos are from 2020.



Ground Floor

Ground Floor





First Floor

First Floor



## FEATURES

Master Bedroom

---

En Suite

---

Built-in Storage

---

Second Double Bedroom

---

Off-Street Parking

---

Built-in Storage

---

Large Reception Room

---

Kitchen

---

Family Bathroom

---

## OTHER USEFUL INFORMATION

EPC

---

D

Council Tax Band

---

H

Annual Ground Rent

---

Peppercorn

Annual Service Charge

---

£600

Service Charge Review Period

---

Paid annually

---

## NEAREST TUBE STATIONS

Victoria (District, Circle, Victoria, Mainline and National Coach

---

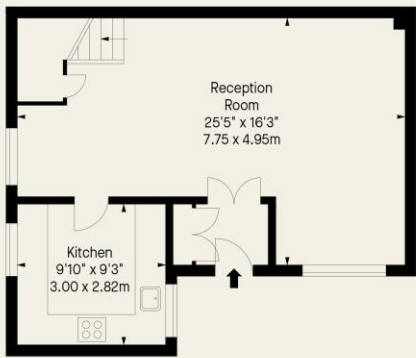
Services)

---

West Mews, SW1  
Approx. Gross Internal Area \*  
932 Ft<sup>2</sup> - 86.58 M<sup>2</sup>



First Floor



Ground Floor

Hyde Park  
37-41 Sussex Place, Hyde Park,  
London W2 2TH

South Kensington  
4-5 Kynance Place, South Kensington,  
London SW7 4QS

[WWW.LUROTBRAND.CO.UK](http://WWW.LUROTBRAND.CO.UK)



Members of NAEA, ARLA, onthemarket.com. Lurot Brand (2) Limited T/A Lurot Brand. Registered in England No. 02035540. Registered Office: 37-41 Sussex Place, London, W2 2TH. VAT No. 629 099 505. [www.lurotbrand.co.uk](http://www.lurotbrand.co.uk)

We have produced these sales particulars as a general guide. We have not carried out a detailed survey of the property and have not tested the services, appliances, or specific fittings. Room sizes are for general guidance purposes and should not be relied upon for fitting carpets or furnishings. Pictures may have been digitally enhanced. Floor plans are not to scale. Fittings shown on floor plans may not match the actual layout or size of fittings at the property. None of the statements as to the property contained in these particulars are to be relied upon as statements or representations of fact. Any reference to alterations to, or use of, any part of the property does not mean that any necessary planning, building regulations or other consent has been obtained. A buyer or lessee must find out by inspection or in other ways that these matters have been properly dealt with and that all information is correct.

All statements in these particulars as to this property are made without responsibility on the part of Lurot Brand. The Seller does not make or give, and neither Lurot Brand nor any person in their employment has any authority to make or give any representation or warranty whatever in relation to this property.