



Upbrook Mews, W2

LUROT BRAND

MEWS SPECIALISTS EST. 1971

020 7590 9955
sales@lurotbrand.co.uk



Ground Floor

Second Floor



Upbrook Mews, W2

Freehold

£1,500,000 STC

A charming three-bedroom mews house in a popular Bayswater Mews.

With well organised and spacious accommodation arranged over three floors, this mews house offers generous reception space and a large principal bedroom. The ground floor has a large open plan kitchen and reception room, which has been recently renovated. The first floor comprises of two bedrooms and a separate bathroom. On the second floor we have a large master bedroom with ensuite and plenty of built-in storage. With large windows throughout, the property boasts plenty of natural light across all floors.

LOCATION

Upbrook Mews is located in Craven Village in the heart of Bayswater. The area is characterised by its large open streets and stucco rendered Victorian mansion blocks. The area is popular for its local shops, cafes and restaurants as well as its proximity to Hyde Park and the excellent transport connections from Paddington.



Ground Floor

First Floor





Second Floor

External



FEATURES

Principal Bedroom	Living Room
Two Guest Bedrooms	Reception Room
One Ensuite	Kitchen
One Guest Bathroom	

OTHER USEFUL INFORMATION

EPC	C
Council Tax Band	F

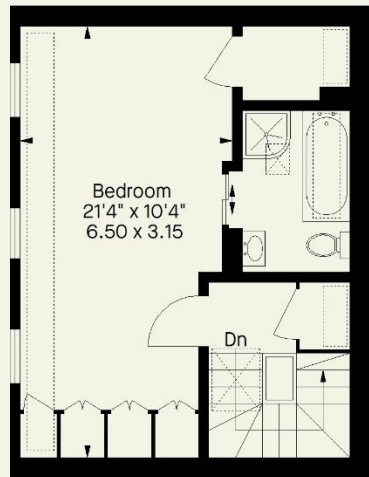
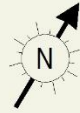
NEAREST TUBE STATIONS

Paddington Station (Circle, District, Bakerloo, Elizabeth, National Rail)
--

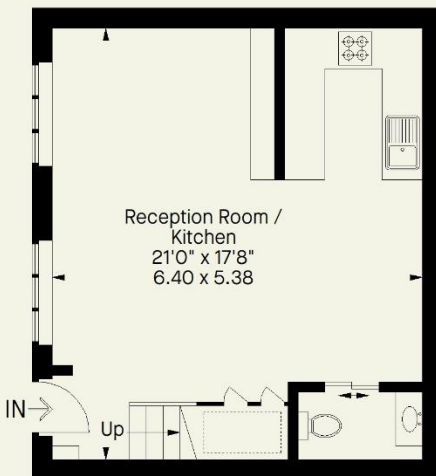
Upbrook Mews, W2

Approximate Gross Internal Area
(Excluding Void)

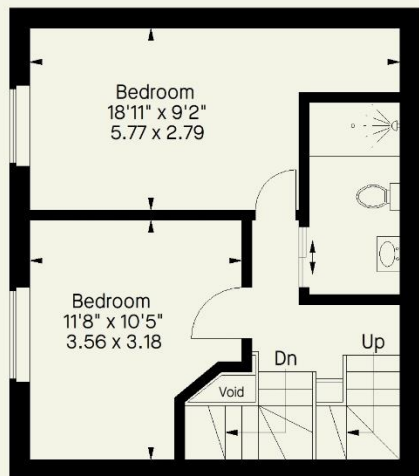
1094 FT² - 101.6 M²



Second Floor



Ground Floor



First Floor

Whilst every attempt has been made to ensure the accuracy of the floorplan contained here, measurements of doors, windows, rooms and any other item are approximate and no responsibility is taken for any error, omission, or misstatement. This plan is for guidance only and must not be relied upon as a statement of fact. Attention is drawn to the important notice on the last page of the text in the particulars.

Hyde Park
37-41 Sussex Place, Hyde Park,
London W2 2TH

South Kensington
4-5 Kynance Place, South Kensington,
London SW7 4QS

WWW.LUROTBRAND.CO.UK



Members of NAEA, ARLA, onthemarket.com. Lurot Brand (2) Limited T/A Lurot Brand. Registered in England No. 02035540. Registered Office: 37-41 Sussex Place, London, W2 2TH. VAT No. 629 099 505. www.lurotbrand.co.uk

We have produced these sales particulars as a general guide. We have not carried out a detailed survey of the property and have not tested the services, appliances, or specific fittings. Room sizes are for general guidance purposes and should not be relied upon for fitting carpets or furnishings. Pictures may have been digitally enhanced. Floor plans are not to scale. Fittings shown on floor plans may not match the actual layout or size of fittings at the property. None of the statements as to the property contained in these particulars are to be relied upon as statements or representations of fact. Any reference to alterations to, or use of, any part of the property does not mean that any necessary planning, building regulations or other consent has been obtained. A buyer or lessee must find out by inspection or in other ways that these matters have been properly dealt with and that all information is correct.

All statements in these particulars as to this property are made without responsibility on the part of Lurot Brand. The Seller does not make or give and neither Lurot Brand or any person in their employment has any authority to make or give any representation or warranty whatever in relation to this property.