



Hesper Mews, SW5

LUROT BRAND

MEWS SPECIALISTS EST. 1971

020 7590 9955
sales@lurotbrand.co.uk



Second Floor

Second Floor



Hesper Mews, SW5

Freehold

£2,950,000 STC

Fabulous three-bedroom house in a quiet mews situated close to Gloucester Road and Earls Court.

The house has a large kitchen, dining area and reception room on the ground floor, three bedrooms and two bathrooms on the first floor and a large reception room leading onto a superb roof terrace on the third floor. Refurbished to a high standard and presented in excellent order.

LOCATION

Hesper mews is arguably the prettiest mews in the area, while this house is nestled at the end of its quietest alcove. Bathed in sunshine and the tranquillity this location provides. It is also a few minutes' walk from south Kensington and the Restaurants, shops and bars the area has become world renowned for.



Ground Floor

First Floor





Ground Floor

First Floor



FEATURES

Three Bedrooms

Kitchen

Three Bathrooms

Reception Room

Entrance Hall

Dining Room

Cloakroom

Study

Roof Terrace

Patio

OTHER USEFUL INFORMATION

EPC

E

Council Tax Band

H

NEAREST TUBE STATIONS

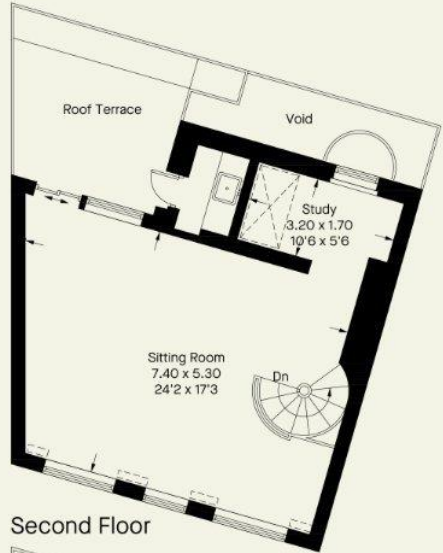
Gloucester Road (Piccadilly, Circle and District lines)

Hesper Mews, SW5

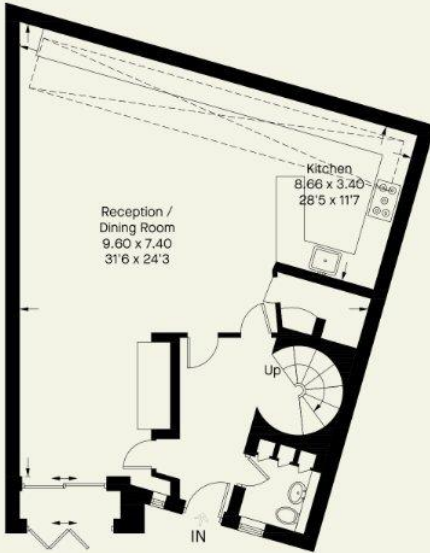
Approximate Area = 168.0 sq m / 1808 sq ft
Including Limited Use Area (0.4 sq m / 4 sq ft)



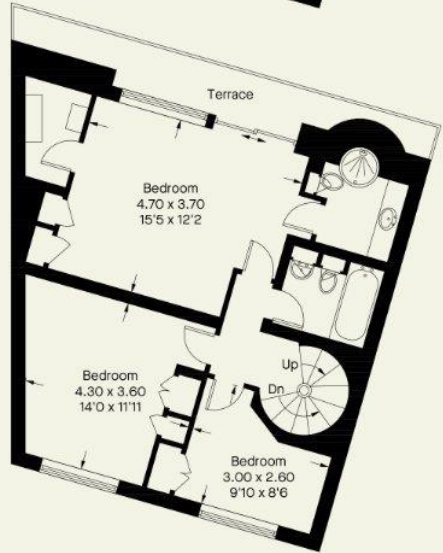
 - Reduce head height below 1.5m



Second Floor



Ground Floor



First Floor

Whilst every attempt has been made to ensure the accuracy of the floor plan contained here, measurements of doors, windows, rooms and any other item are approximate and no responsibility is taken for any error, omission, or misstatement. Please check all dimensions before making a decision reliant upon them.

Notting Hill
8 Ladbroke Grove, Notting Hill,
London W11 3BG

Hyde Park
37-41 Sussex Place, Hyde Park,
London W2 2TH

South Kensington
4-5 Kynance Place, South Kensington,
London SW7 4QS

WWW.LUROTBRAND.CO.UK



Members of NAEA, ARLA, onthemarket.com. Lurot Brand (2) Limited T/A Lurot Brand. Registered in England No. 02035540. Registered Office: 37-41 Sussex Place, London, W2 2TH. VAT No. 629 099 505. www.lurotbrand.co.uk

We have produced these sales particulars as a general guide. We have not carried out a detailed survey of the property and have not tested the services, appliances, or specific fittings. Room sizes are for general guidance purposes and should not be relied upon for fitting carpets or furnishings. Pictures may have been digitally enhanced. Floor plans are not to scale. Fittings shown on floor plans may not match the actual layout or size of fittings at the property. None of the statements as to the property contained in these particulars are to be relied upon as statements or representations of fact. Any reference to alterations to, or use of, any part of the property does not mean that any necessary planning, building regulations or other consent has been obtained. A buyer or lessee must find out by inspection or in other ways that these matters have been properly dealt with and that all information is correct.

All statements in these particulars as to this property are made without responsibility on the part of Lurot Brand. The Seller does not make or give and neither Lurot Brand or any person in their employment has any authority to make or give any representation or warranty whatever in relation to this property.