



Hesper Mews, SW5

LUROT BRAND

MEWS SPECIALISTS EST. 1971

020 7590 9955

lettings@lurotbrand.co.uk



Roof Terrace

Reception Room



Hesper Mews, SW5

Unfurnished

£1,700 PW

Fabulous house in a quiet mews situated between Gloucester Road and Earls Court Road.

The house has a large kitchen, dining area and reception room on the ground floor, three bedrooms and two bathrooms on the first floor and a large reception room leading onto a superb roof terrace on the third floor. Refurbished to a high standard and presented in excellent order, this mews home is ideal for a family.

LOCATION

Hesper Mews is ideally situated for the extensive amenities of nearby Gloucester Road and Earls Court. Easy access to the West Country and Heathrow by road too.



Bedroom

Kitchen





Bedroom

Reception Room



FEATURES

3 Bedrooms

2 Receptions

2 Bathrooms

Modern Kitchen

Roof Terrace

OTHER USEFUL INFORMATION

EPC

E

Council Tax Band

H

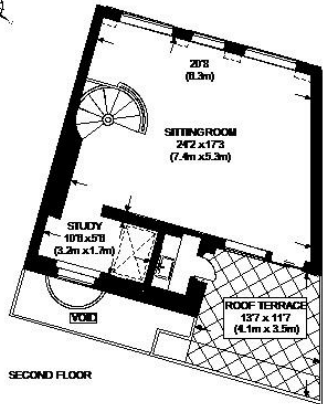
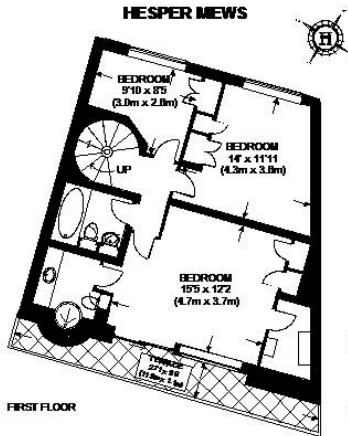
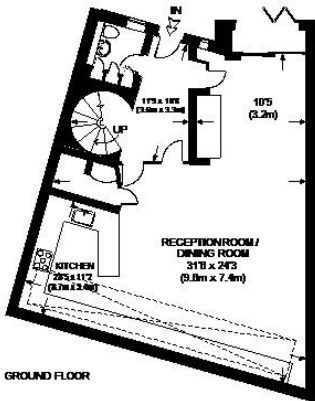
Deposit Amount

£10,200.00

NEAREST TUBE STATIONS

Earls Court (Piccadilly Line, District and Circle Line) Gloucester
Road (Piccadilly Line, District and Circle Line)

HESPER MEWS



 = RH = RESTRICTED HEAD ROOM BELOW 5 FT. / 1.5 M. MAX

APPROXIMATE GROSS INTERNAL AREA = 1808 SQ.FT. (168 SQ. M.)

This plan is for layout guidance only. Not drawn to scale unless stated. Windows & door openings are approximate. Whilst every care is taken in the preparation of this plan, please check all dimensions, shapes & compass bearings before making any decisions reliant upon it. Please be advised that Hamlors International / our agents have not seen or reviewed any building regulations or planning permission in relation to works carried out to the property.

Notting Hill
8 Ladbroke Grove, Notting Hill,
London W11 3BG

Hyde Park
37-41 Sussex Place, Hyde Park,
London W2 2TH

South Kensington
4-5 Kynance Place, South Kensington,
London SW7 4QS

WWW.LUROTBRAND.CO.UK



Members of NAEA, ARLA, onthemarket.com. Lurot Brand (2) Limited T/A Lurot Brand. Registered in England No. 02035540. Registered Office: 37-41 Sussex Place, London, W2 2TH. VAT No. 629 099 505. www.lurotbrand.co.uk

We have produced these sales particulars as a general guide. We have not carried out a detailed survey of the property and have not tested the services, appliances, or specific fittings. Room sizes are for general guidance purposes and should not be relied upon for fitting carpets or furnishings. Pictures may have been digitally enhanced. Floor plans are not to scale. Fittings shown on floor plans may not match the actual layout or size of fittings at the property. None of the statements as to the property contained in these particulars are to be relied upon as statements or representations of fact. All statements in these particulars as to this property are made without responsibility on the part of Lurot Brand. The Seller does not make or give and neither Lurot Brand or any person in their employment has any authority to make or give any representation or warranty whatever in relation to this property.