



Denbigh Close, W11

LUROT BRAND

MEWS SPECIALISTS EST. 1971

020 7590 9955
sales@lurotbrand.co.uk



Ground Floor

Ground Floor



Denbigh Close, W11

Freehold

£1,800,000 STC

A charming three-bedroom mews house, set within a cobbled cul-de-sac mews in Notting Hill.

Set on the corner of the mews, and set across three floors, the property offers a large reception room and dining room, a separate kitchen, three double bedrooms with one ensuite and a large guest bathroom.

Denbigh Close runs off the prettiest part of Portobello Road and has been used in many films including the original 'Italian Job'.

LOCATION

The property is set within seconds of Notting Hill and Westbourne Grove's boutiques, shops, bars and restaurants, which makes this area so desirable.

The property is also moments away from Notting Hill Gate tube station (District, Circle, and Central).



First Floor

Ground Floor





External

External



FEATURES

Three Bedrooms	Ensuite Bathroom
Living Room	Guest Bathroom
Kitchen	Dining Room

OTHER USEFUL INFORMATION

EPC	D
Council Tax Band	G

NEAREST TUBE STATIONS


Notting Hill Gate (Central Line, District and Circle line)
--

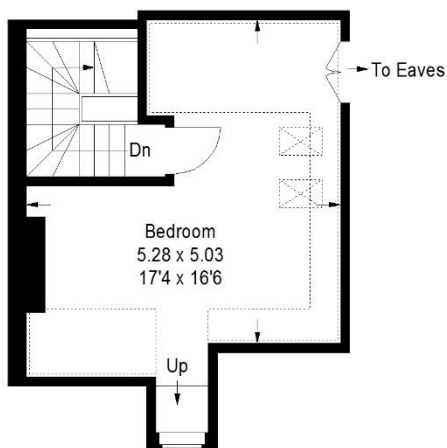
Denbigh Close, W11

Approximate Gross Internal Area

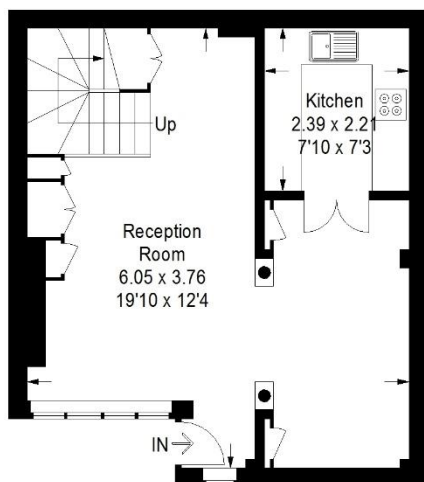
114.7 sq m / 1235 sq ft



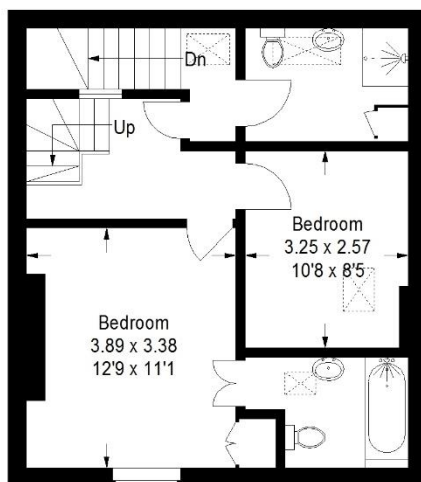
 = Reduced headroom
below 1.5 m / 5'0"



Second Floor



Ground Floor



First Floor

This plan is for layout guidance only. Not drawn to scale unless stated. Windows and door openings are approximate. Whilst every care is taken in the preparation of this plan, please check all dimensions, shapes and compass bearings before making any decisions reliant upon them. (ID1219016)

Hyde Park
37-41 Sussex Place, Hyde Park,
London W2 2TH

South Kensington
4-5 Kynance Place, South Kensington,
London SW7 4QS

WWW.LUROTBRAND.CO.UK



Members of NAEA, ARLA, onthemarket.com. Lurot Brand (2) Limited T/A Lurot Brand. Registered in England No. 02035540. Registered Office: 37-41 Sussex Place, London, W2 2TH. VAT No. 629 099 505. www.lurotbrand.co.uk

We have produced these sales particulars as a general guide. We have not carried out a detailed survey of the property and have not tested the services, appliances, or specific fittings. Room sizes are for general guidance purposes and should not be relied upon for fitting carpets or furnishings. Pictures may have been digitally enhanced. Floor plans are not to scale. Fittings shown on floor plans may not match the actual layout or size of fittings at the property. None of the statements as to the property contained in these particulars are to be relied upon as statements or representations of fact. Any reference to alterations to, or use of, any part of the property does not mean that any necessary planning, building regulations or other consent has been obtained. A buyer or lessee must find out by inspection or in other ways that these matters have been properly dealt with and that all information is correct.

All statements in these particulars as to this property are made without responsibility on the part of Lurot Brand. The Seller does not make or give and neither Lurot Brand or any person in their employment has any authority to make or give any representation or warranty whatever in relation to this property.